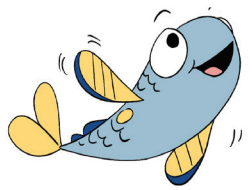




RAKE IT OR LEAVE IT -- PROPER DISPOSAL OF YARD WASTE

Image: Strawberry Banke Museum



THINK BLUE! CITY OF PORTSMOUTH DPW STORMWATER DIVISION
CityofPortsmouth.com/public-works/stormwater



Rake It or Leave It

Leaves and grass clippings can be a valuable resource OR a source of water pollution.



WHAT YOU CAN DO:

Mulch. Remove the bag from your lawnmower or use a mulching lawnmower to add nutrients to your lawn and to avoid having to dispose of the grass clippings. This will also reduce the need for fertilizers. NEVER dispose of leaves or clippings in or near storm drains, drainage channels (where water drains rain or melting snow), wetlands or water bodies!

Curbside Collection. Bag leaves and clippings in paper bags or a clearly marked "Yard Waste" container to be picked up by DPW staff. Brush must be cut into lengths not exceeding 4 feet, contain no pieces greater than 5 inches diameter, and be tied in bundles not exceeding 1 foot in diameter and 50 pounds total.

Compost at the City Recycling Center. Drop off your yard waste to be composted at 680 Peverly Hill Road.

Compost at home. Start backyard composting (away from surface waters). See the "how-to" brochure. www.des.nh.gov/organization/divisions/waste/swrtas/documents/compost_flier.pdf

THINK CLEAN WATER, THINK BLUE!

