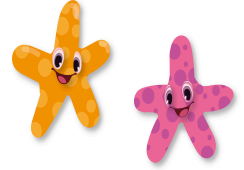


Portsmouth Preschool LEARNING OPPORTUNITY for children ages 3-5.



For the upcoming school year, Portsmouth will offer an inclusive preschool program located at Little Harbour School. Portsmouth Early Education Program (PEEP) supports diverse learners including students who are typically developing and children with educational disabilities. The classroom offers a child-led learning approach with diverse, sensory, language rich opportunities. While exploring learning themes using blocks, manipulatives, arts and crafts, outside exploration and creative play, students gain Kindergarten readiness skills through developmentally appropriate activities.



To enroll students must be:

- * School age 3-5
- * Toilet-trained
- * Current on NH required immunizations
- * Age-appropriate with social & communication skill (i.e. not currently on an Individualized Education Plan - IEP)

This inclusive model will offer the following:

- Classroom led by NH DOE Early Childhood Educator and NH DOE Early Childhood Special Educator
- Involvement of a speech language therapist and occupational therapist
- Creative Curriculum© for support of hands-on learning
- Focus on development of early literacy skills through play-based approaches

Sessions will be **8:30AM-12:30PM Monday through Thursday.**

Two options for attendance are available:

4 days weekly for \$400 monthly

2 days weekly for \$200 monthly

Parents/guardians must be able to provide transportation to/from each session.



If interested, please contact Kristine Simone at Portsmouth School Department Central Office for an application at 603-610-4473 or email ksimone@sau52.org
Deadline for application is **April 15th** with notification of selection for enrollment no later than May 15th. Application priority will be given to Portsmouth residents. There will be rolling enrollment after the initial deadline and a waitlist for interested families.