

FIGURE PRD-SG3

Proposed Groundwater Development Zone PRD-SG3 Sand & Gravel Aquifer(s)

City of Portsmouth, New Hampshire Groundwater Exploration Program

Proposed Groundwater Development Zones Sand & Gravel Aquifer(s)

Potential Groundwater Quality

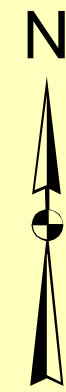
- More Favorable
- Less Favorable

Portsmouth Water Pipelines

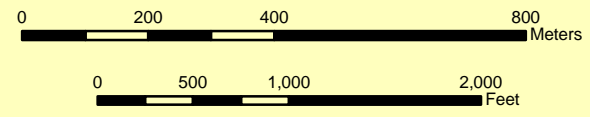
DIAMETER (inches)

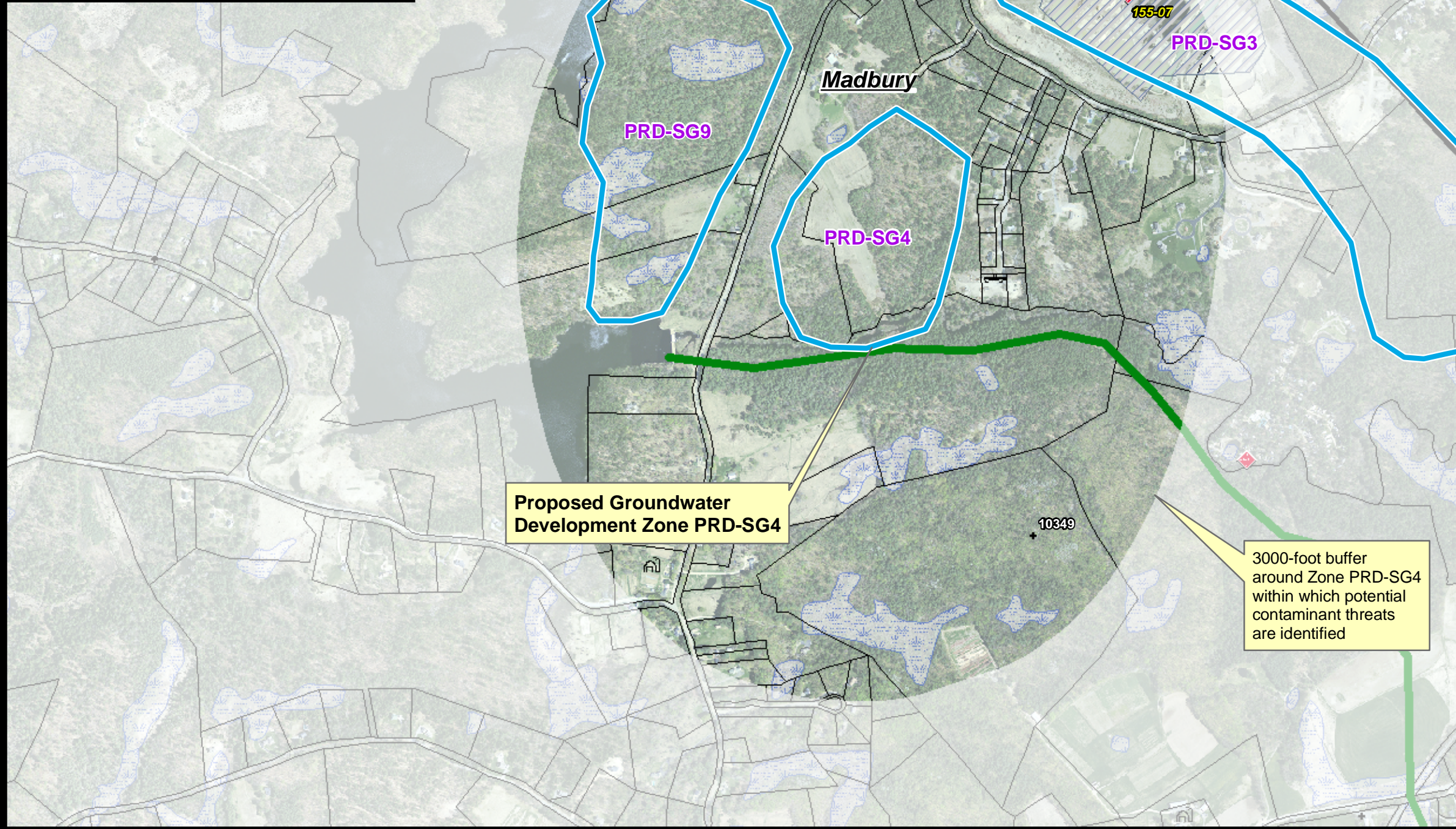
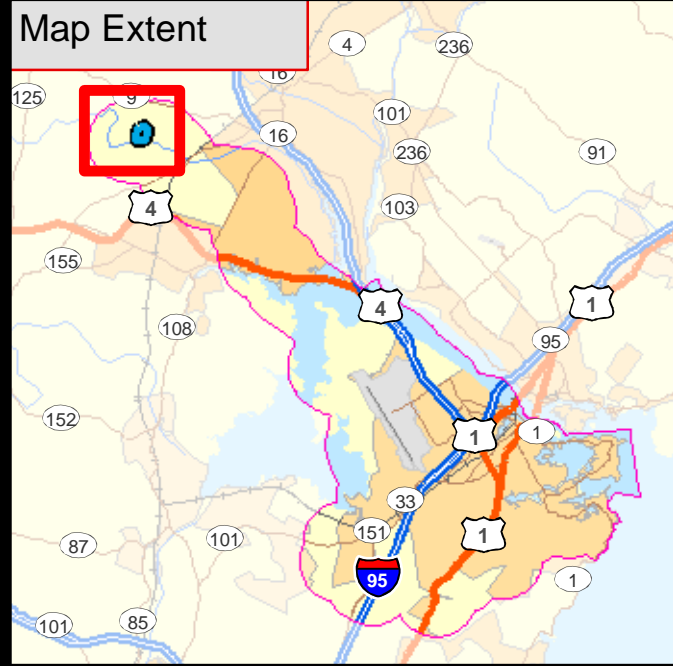
- 6 and 8
- 10 to 14
- 16 to 24
- Tax Map Parcels

3000-foot buffer around Zone PRD-SG3 within which potential contaminant threats are identified



Scale is 1:12,000
1 inch equals 1,000 feet





Potential Contaminant Threats are labeled within 3,000 feet of the Proposed Groundwater Development Zone. Refer to Plate 2 legend for the potential contaminant threats and Appendix B for specific site information.

FIGURE PRD-SG4

Proposed Groundwater Development Zone PRD-SG4 Sand & Gravel Aquifer(s)

City of Portsmouth, New Hampshire
Groundwater Exploration Program

Proposed Groundwater Development Zones Sand & Gravel Aquifer(s)

Potential Groundwater Quality

- More Favorable
- Less Favorable

Portsmouth Water Pipelines

DIAMETER (inches)

- 6 and 8
- 10 to 14
- 16 to 24
- Tax Map Parcels

Proposed Groundwater Development Zone PRD-SG4

3000-foot buffer around Zone PRD-SG4 within which potential contaminant threats are identified

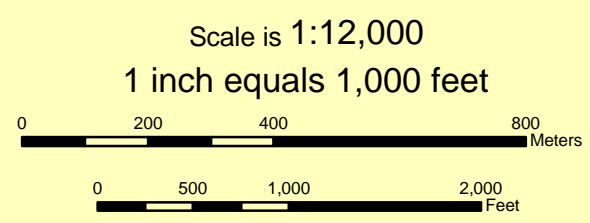
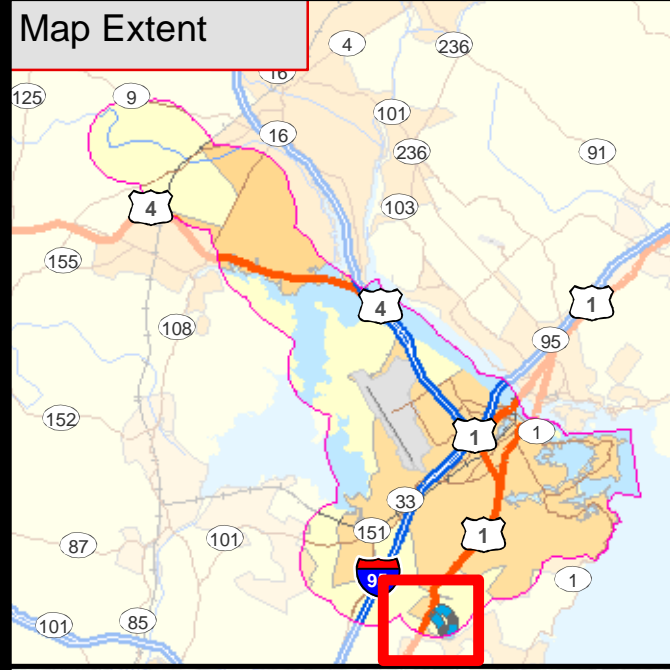


FIGURE PRD-SG4

Emery & Garrett Groundwater, Inc.

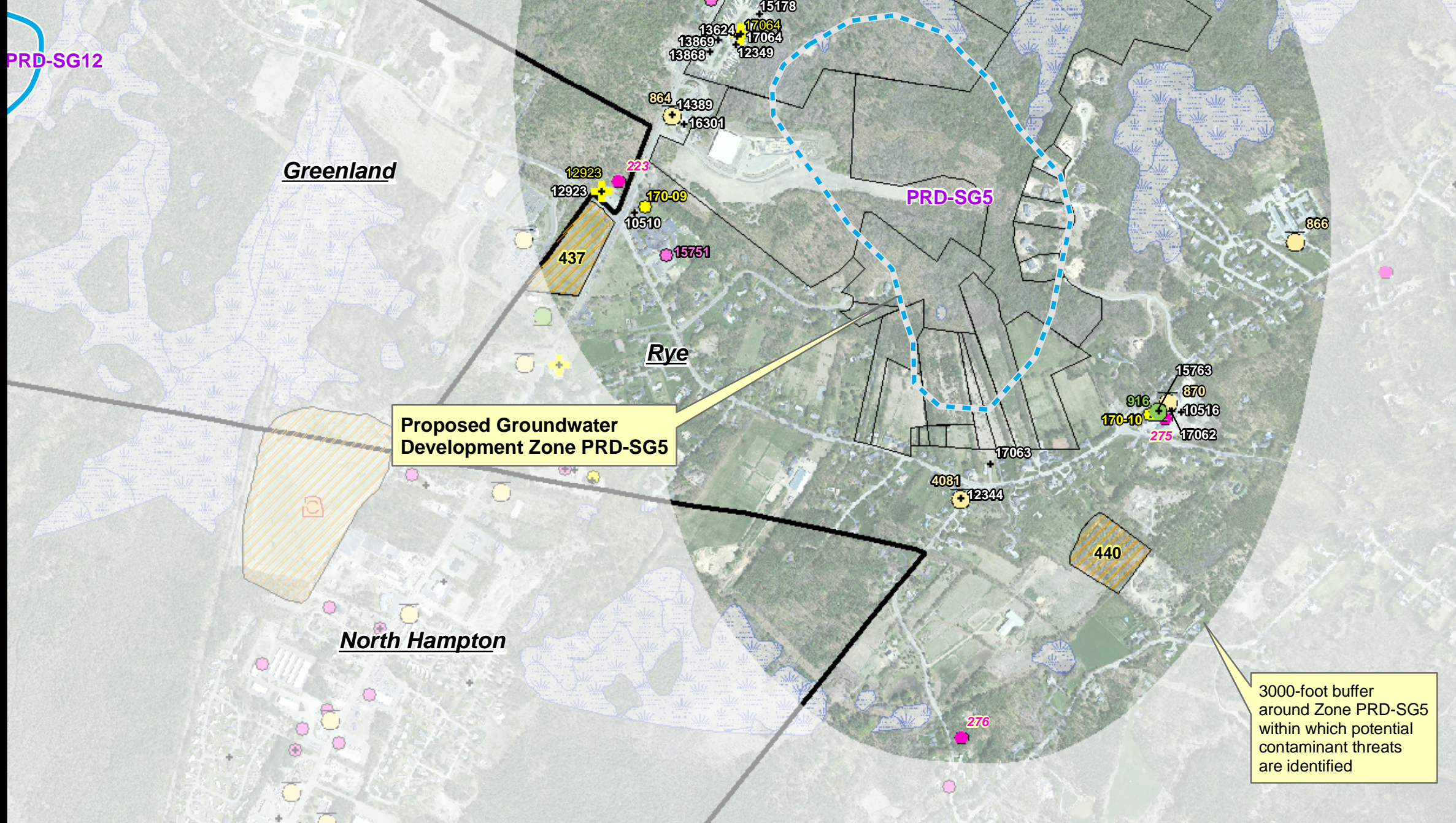


Potential Contaminant Threats are labeled within 3,000 feet of the Proposed Groundwater Development Zone. Refer to Plate 2 legend for the potential contaminant threats and Appendix B for specific site information.

FIGURE PRD-SG5

Proposed Groundwater Development Zone PRD-SG5 Sand & Gravel Aquifer(s)

City of Portsmouth, New Hampshire
Groundwater Exploration Program



Proposed Groundwater Development Zones Sand & Gravel Aquifer(s)

Potential Groundwater Quality

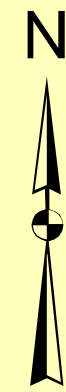
- More Favorable
- Less Favorable

Portsmouth Water Pipelines DIAMETER (inches)

- 6 and 8
- 10 to 14
- 16 to 24
- Tax Map Parcels

Proposed Groundwater Development Zone PRD-SG5

3000-foot buffer around Zone PRD-SG5 within which potential contaminant threats are identified



Scale is 1:12,000
1 inch equals 1,000 feet

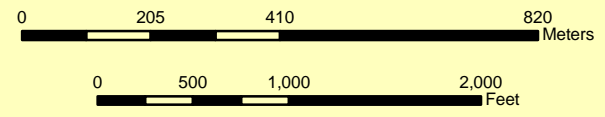
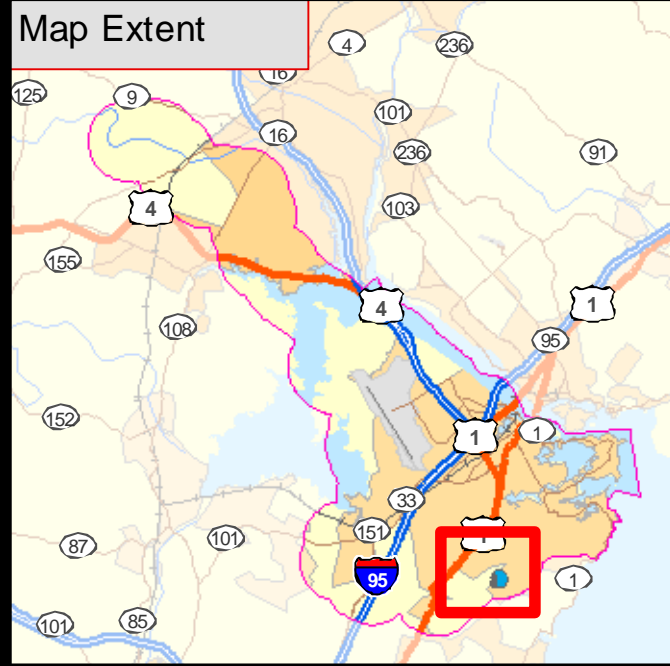


FIGURE PRD-SG5

Emery & Garrett Groundwater, Inc.

O:\nh\Prtsmth\PRD\IPh1\Working\GIS\Figure PRD-SG5.mxd



Potential Contaminant Threats are labeled within 3,000 feet of the Proposed Groundwater Development Zone. Refer to Plate 2 legend for the potential contaminant threats and Appendix B for specific site information.

FIGURE PRD-SG6

Proposed Groundwater Development Zone PRD-SG6 Sand & Gravel Aquifer(s)

City of Portsmouth, New Hampshire
Groundwater Exploration Program

Proposed Groundwater Development Zones Sand & Gravel Aquifer(s)

Potential Groundwater Quality

- More Favorable
- Less Favorable

Portsmouth Water Pipelines DIAMETER (inches)

- 6 and 8
- 10 to 14
- 16 to 24
- Tax Map Parcels

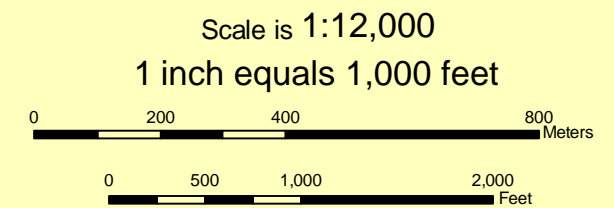
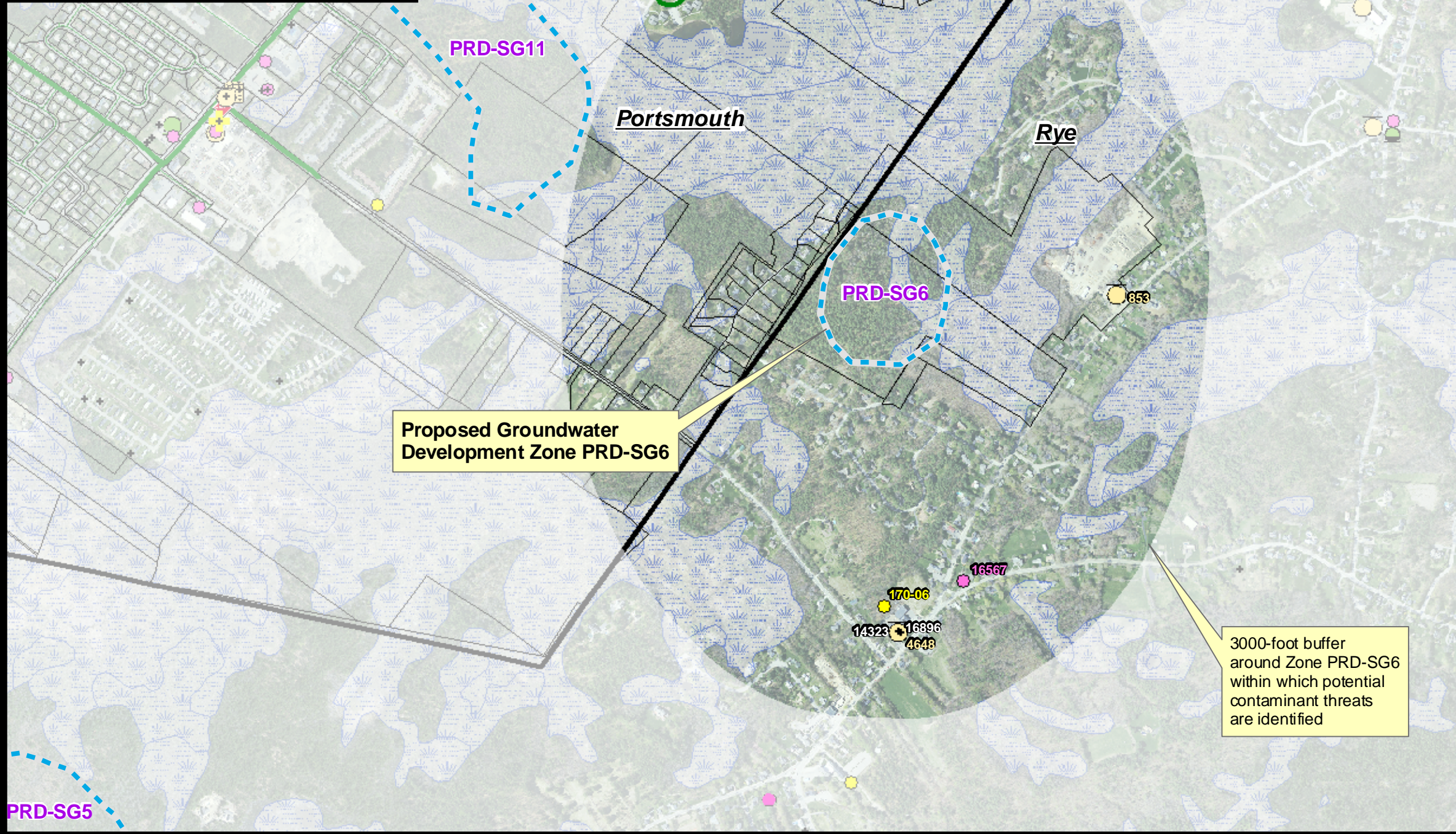


FIGURE PRD-SG6

Emery & Garrett Groundwater, Inc.