

3000-foot buffer around Zone PRD-4 within which potential contaminant threats are identified

Potential Contaminant Threats are labeled within 3,000 feet of the Proposed Groundwater Development Zone. Refer to Plate 2 legend for the potential contaminant threats and Appendix B for specific site information.

Proposed Groundwater Development Zone PRD-4

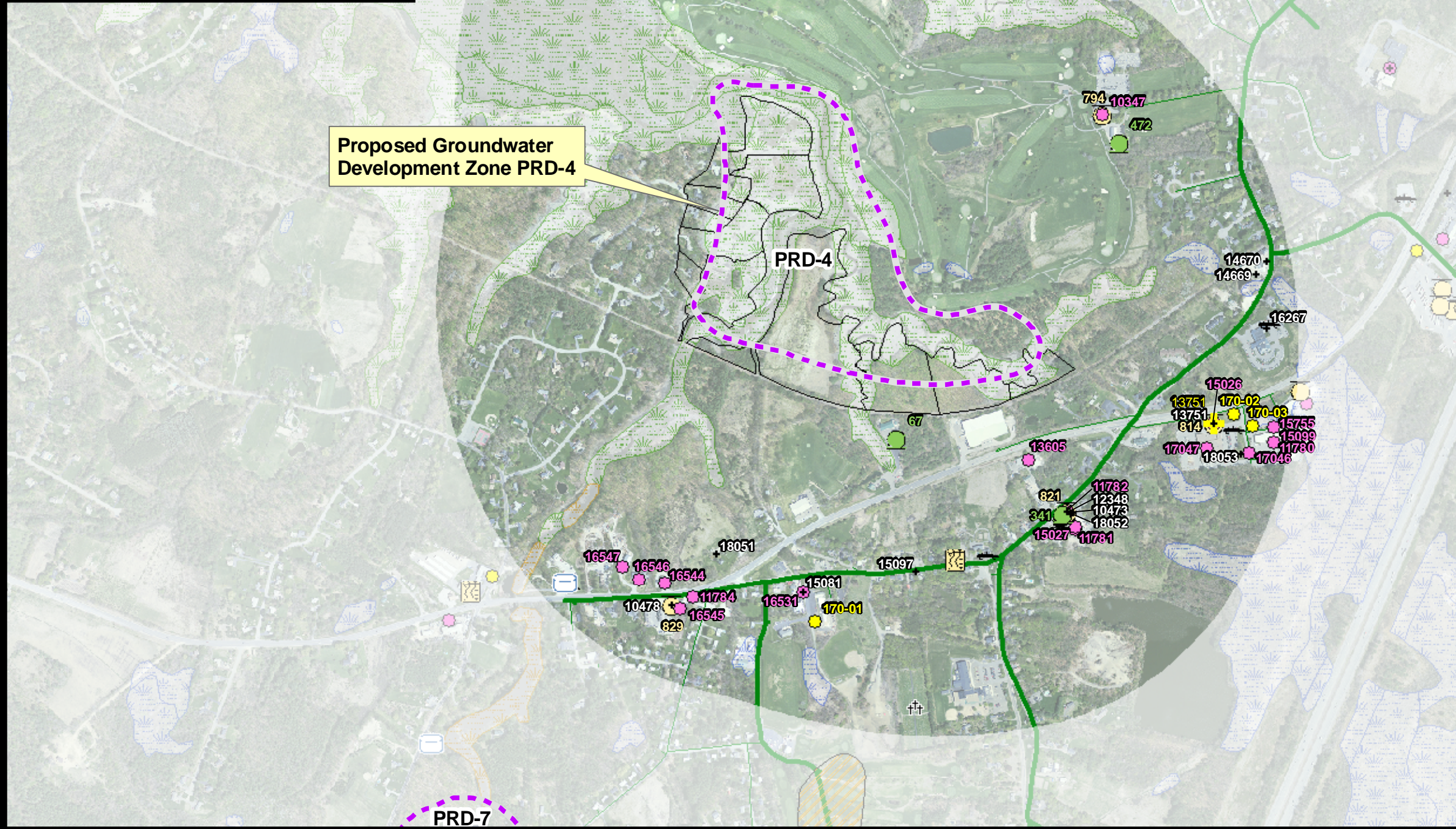


FIGURE PRD-4

Proposed Groundwater Development Zone PRD-4 Bedrock Aquifer(s)

City of Portsmouth, New Hampshire Groundwater Exploration Program

Proposed Groundwater Development Zone PRD-4 Bedrock Aquifer(s)

Potential Groundwater Quality

- More Favorable
- Less Favorable

Portsmouth Water Pipelines DIAMETER (inches)

- 6 and 8
- 10 to 14
- 16 to 24

Tax Map Parcels

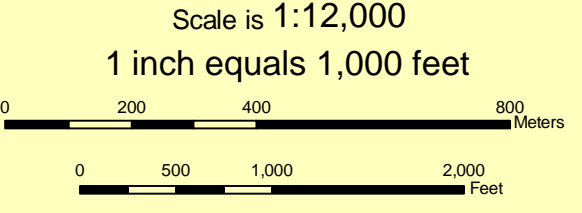
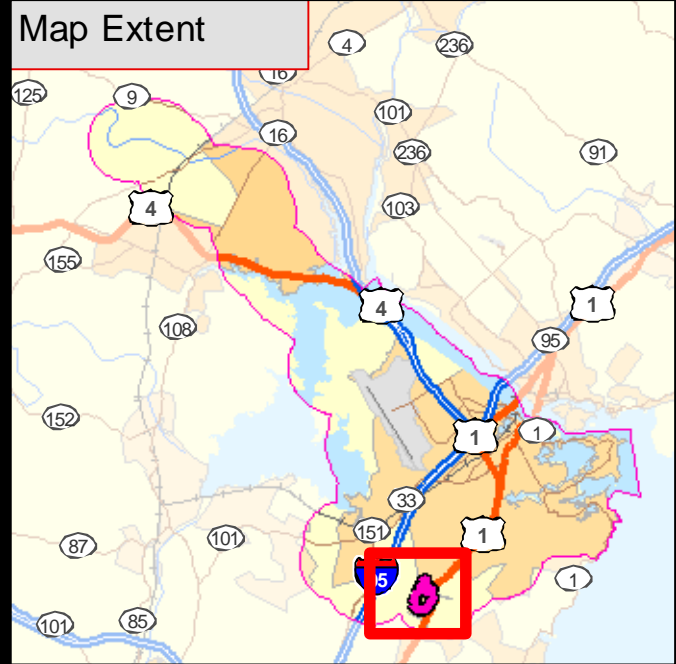
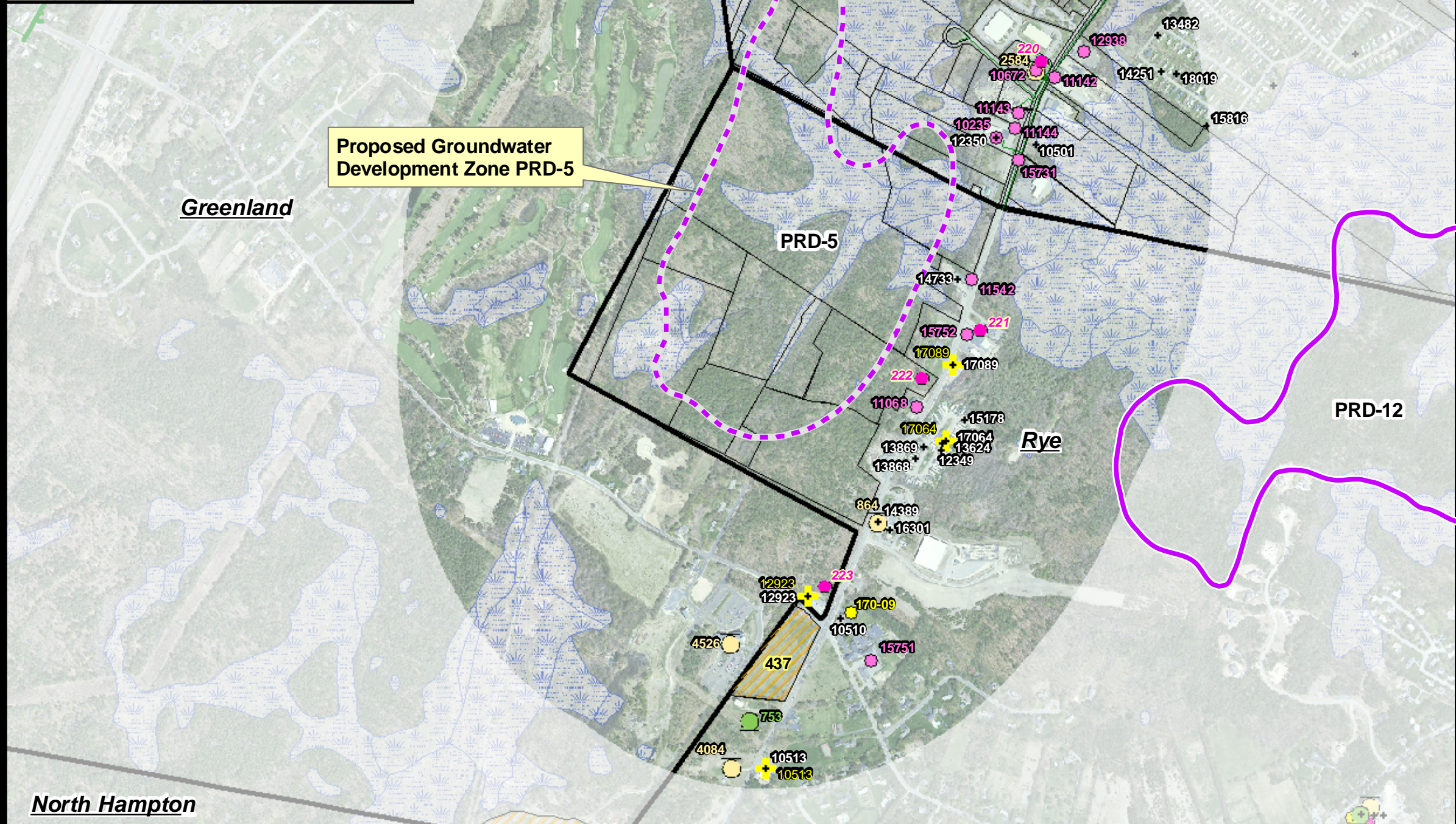


FIGURE PRD-4

Emery & Garrett Groundwater, Inc.



3000-foot buffer around Zone PRD-5 within which potential contaminant threats are identified



Proposed Groundwater Development Zone PRD-5

FIGURE PRD-5

Proposed Groundwater Development Zone PRD-5

Bedrock Aquifer(s)

City of Portsmouth, New Hampshire
Groundwater Exploration Program

Proposed Groundwater Development Zone PRD-5 Bedrock Aquifer(s)

Potential Groundwater Quality

- More Favorable
- Less Favorable

Portsmouth Water Pipelines

DIAMETER (inches)

- 6 and 8
- 10 to 14
- 16 to 24
- Tax Map Parcels

Potential Contaminant Threats are labeled within 3,000 feet of the Proposed Groundwater Development Zone. Refer to Plate 2 legend for the potential contaminant threats and Appendix B for specific site information.



Scale is 1:12,000
1 inch equals 1,000 feet

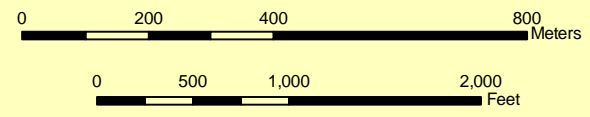
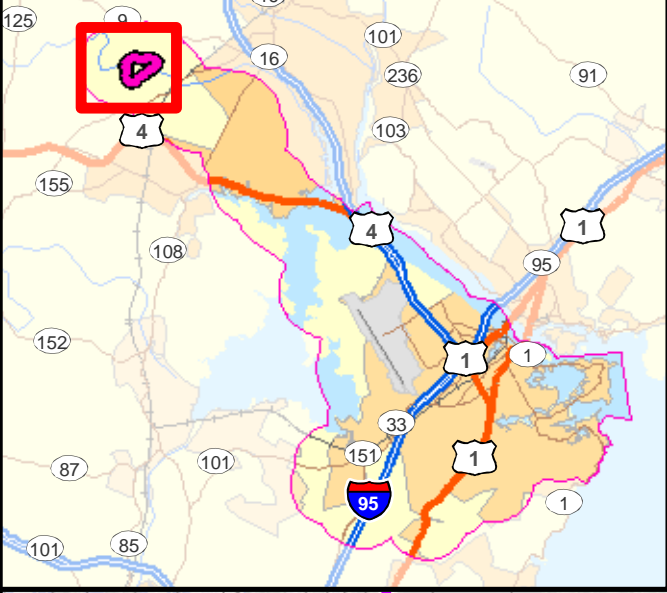


FIGURE PRD-5

Emery & Garrett Groundwater, Inc.

Map Extent



3000-foot buffer around Zone PRD-6 within which potential contaminant threats are identified

Proposed Groundwater Development Zone PRD-6

Potential Contaminant Threats are labeled within 3,000 feet of the Proposed Groundwater Development Zone. Refer to Plate 2 legend for the potential contaminant threats and Appendix B for specific site information.

FIGURE PRD-6

Proposed Groundwater Development Zone PRD-6
Bedrock Aquifer(s)

City of Portsmouth, New Hampshire
Groundwater Exploration Program

Proposed Groundwater Development Zones Bedrock Aquifer(s)

Potential Groundwater Quality

- More Favorable
- Less Favorable

Portsmouth Water Pipelines DIAMETER (inches)

- 6 and 8
- 10 to 14
- 16 to 24
- Tax Map Parcels

N



Scale is 1:12,000
1 inch equals 1,000 feet

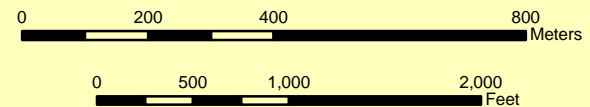
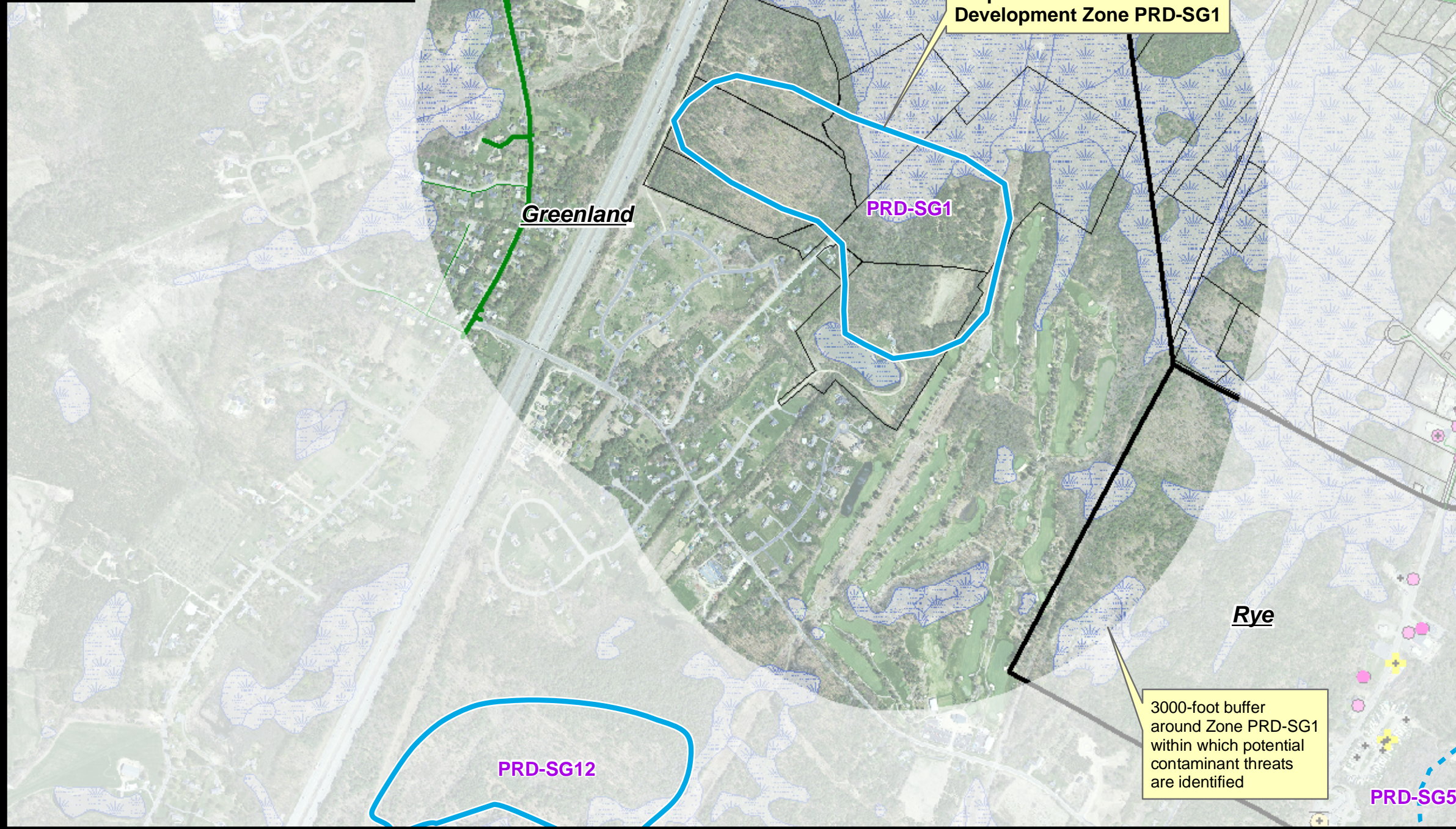
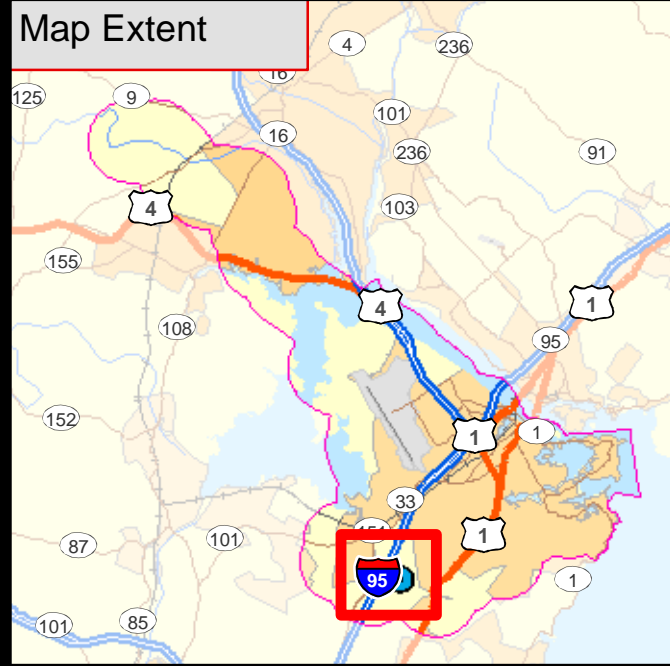


FIGURE PRD-6

Emery & Garrett Groundwater, Inc.



Potential Contaminant Threats are labeled within 3,000 feet of the Proposed Groundwater Development Zone. Refer to Plate 2 legend for the potential contaminant threats and Appendix B for specific site information.

GREENLAND WELL

Proposed Groundwater Development Zone PRD-SG1

3000-foot buffer around Zone PRD-SG1 within which potential contaminant threats are identified

FIGURE PRD-SG1

Proposed Groundwater Development Zone PRD-SG1 Sand & Gravel Aquifer(s)

City of Portsmouth, New Hampshire Groundwater Exploration Program

Proposed Groundwater Development Zones Sand & Gravel Aquifer(s)

Potential Groundwater Quality

- More Favorable
- Less Favorable

Wells Operated by City of Portsmouth

- Portsmouth Groundwater Supply Wells

Portsmouth Water Pipelines

DIAMETER (inches)

- 6 and 8
- 10 to 14
- 16 to 24

- Tax Map Parcels

N



Scale is 1:12,000
1 inch equals 1,000 feet

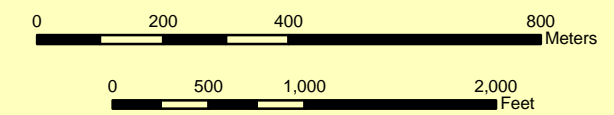
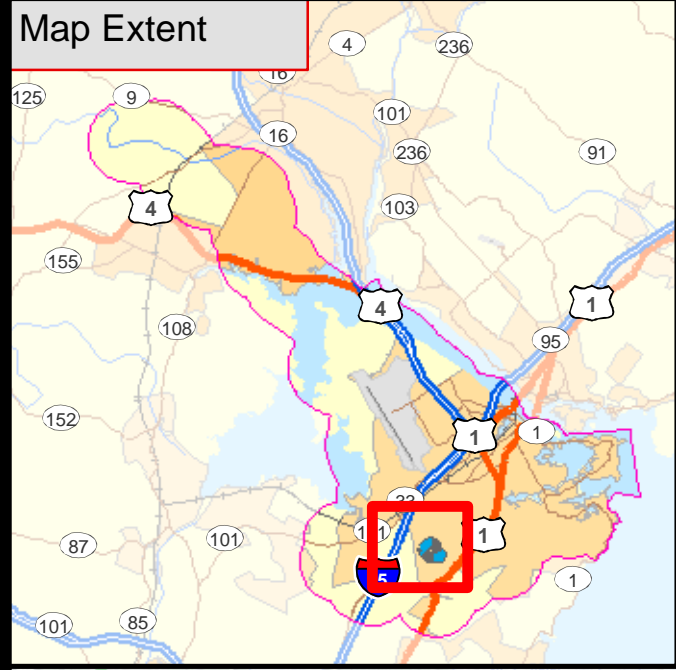
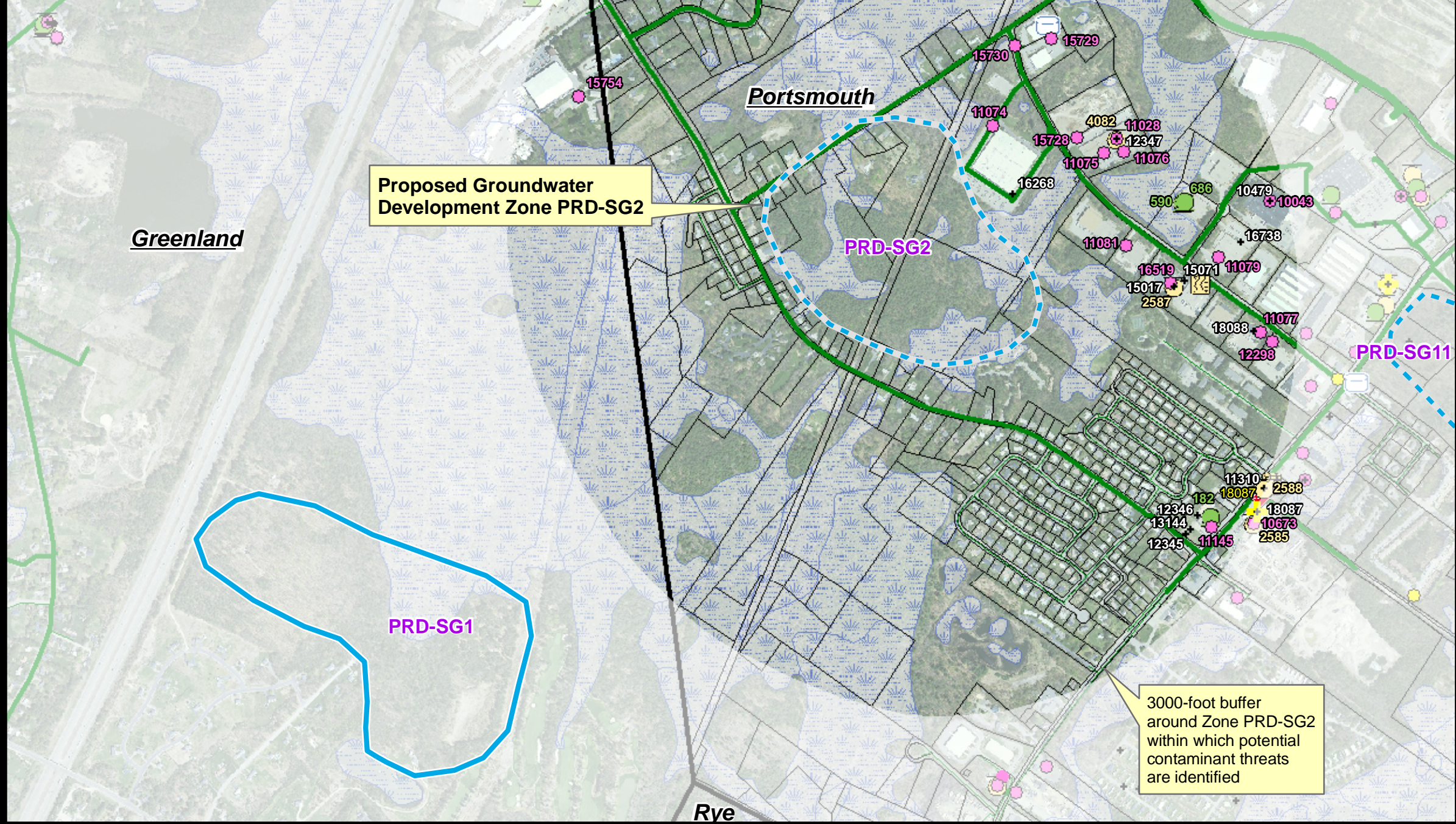


FIGURE PRD-SG1

Emery & Garrett Groundwater, Inc.



Potential Contaminant Threats are labeled within 3,000 feet of the Proposed Groundwater Development Zone. Refer to Plate 2 legend for the potential contaminant threats and Appendix B for specific site information.



Proposed Groundwater Development Zone PRD-SG2

3000-foot buffer around Zone PRD-SG2 within which potential contaminant threats are identified

FIGURE PRD-SG2

Proposed Groundwater Development Zone PRD-SG2 Sand & Gravel Aquifer(s)

City of Portsmouth, New Hampshire Groundwater Exploration Program

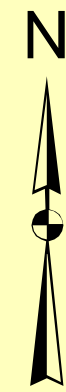
Proposed Groundwater Development Zones Sand & Gravel Aquifer(s)

Potential Groundwater Quality

- More Favorable
- Less Favorable

Portsmouth Water Pipelines DIAMETER (inches)

- 6 and 8
- 10 to 14
- 16 to 24
- Tax Map Parcels



Scale is 1:12,000
1 inch equals 1,000 feet

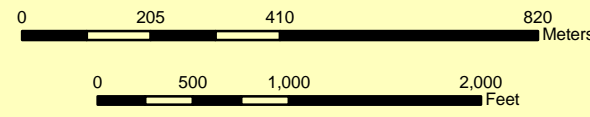


FIGURE PRD-SG2

Emery & Garrett Groundwater, Inc.

O:\nh\Prismth\PRD\Ph1\Working\GIS\Figure PRD-SG2.mxd