

# Project Start-Up Information

## Islington Street Corridor Improvements – Phase 2



March 8, 2023

Purpose of tonight's meeting is to review:

- Project Team
- Limits of Work
- Anticipated Start-up Schedule
- Traffic Patterns
- Distribution of Public Information
- Questions

## Project Team Contacts

City of Portsmouth DPW: 603-427-1530

Underwood Engineers, Inc.: 603-436-6192

Severino Trucking Co. Inc.: 603-483-2133

# City of Portsmouth DPW

- Peter Rice – Director of Public Works
- David Desfosses – Project Manager  
– Primary Project Contact
- Eric Eby – Parking and Transportation Engineer

# Underwood Engineers, Inc. Contacts

- Matt Hall– Project Manager
- Katie Cannella– Project Engineer
- Brad Chareth – Resident Project Representative
- Dan Rochette – Technical Lead

# Severino Trucking Co. Inc. Contacts

- Tom Severino – Vice President
- Mark Rainey – Project Manager
- Roger Rivet – Project Superintendent
  - Cell Phone: (603)-234-0919

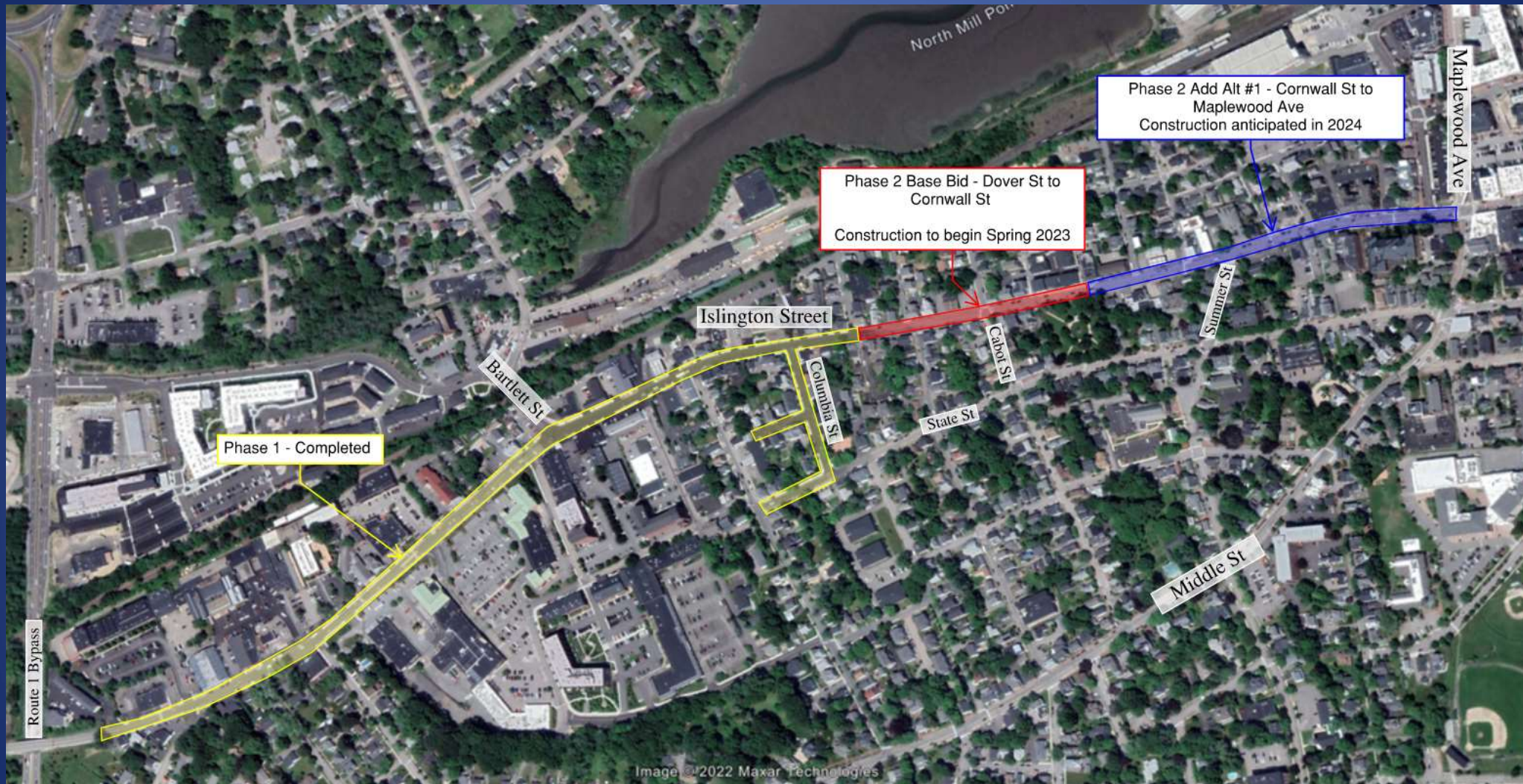
# Project Limits

## Project Limits

- Phase 1 : Route 1 Bypass to Dover St - Completed
- Phase 2 Base Bid: Dover Street to Cornwall Street (2023)
- Phase 2 Add Alternate #3: Goodwin Park Improvements (2023)
- Phase 2 Add Alternate #1: Cornwall Street to Maplewood Avenue
  - Add Alternate #1 has not been awarded and no construction is currently scheduled



# Phase 1 and Phase 2 Limits of Work





## Phase 2 – Project Area

Phase 2 Add Alt #1 - Cornwall St  
to Maplewood Ave  
**Has not been awarded**

Phase 2 Base Bid - Dover St to Cornwall St  
Construction to begin Spring 2023

Phase 2 Add Alt #3 - Goodwin Park  
Construction to begin Spring 2023

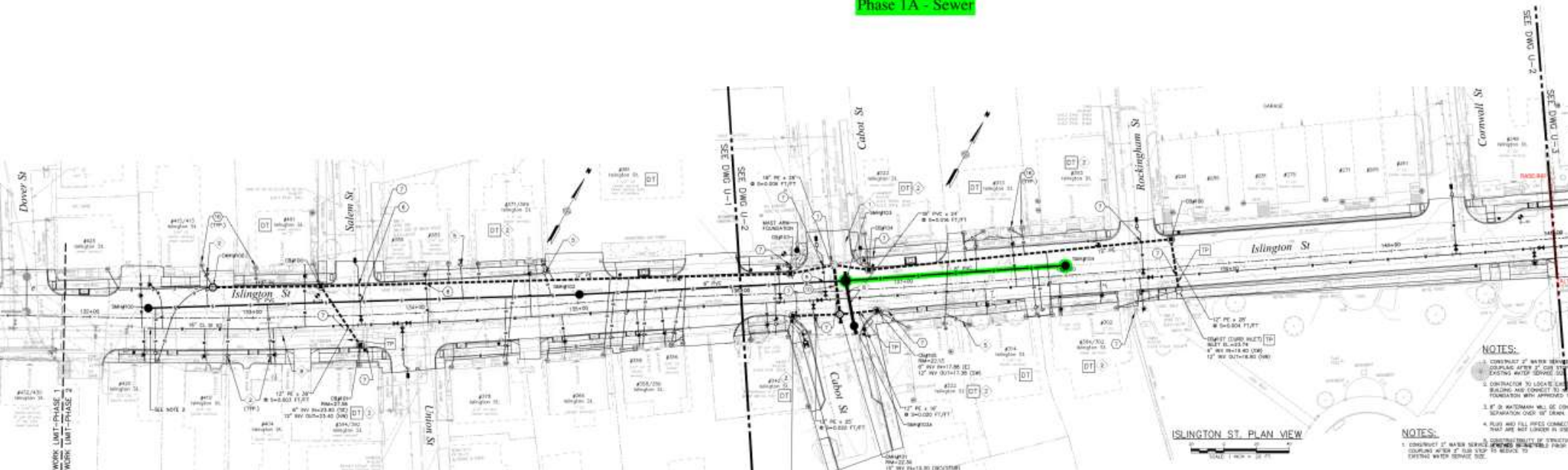


# Construction Start-Up Schedule

- Islington Street – April 3<sup>rd</sup>
  - Dover Street to Cornwall Street
  - Temporary Water systems – April 2023
  - New Sewer Installation – April – June 2023
  - New Water, Drainage, Sidewalk and Roadway reconstruction start anticipated following utility install (July - September 2023)
  
- Goodwin Park – Summer 2023

# 2023 – Project Area & Sequencing

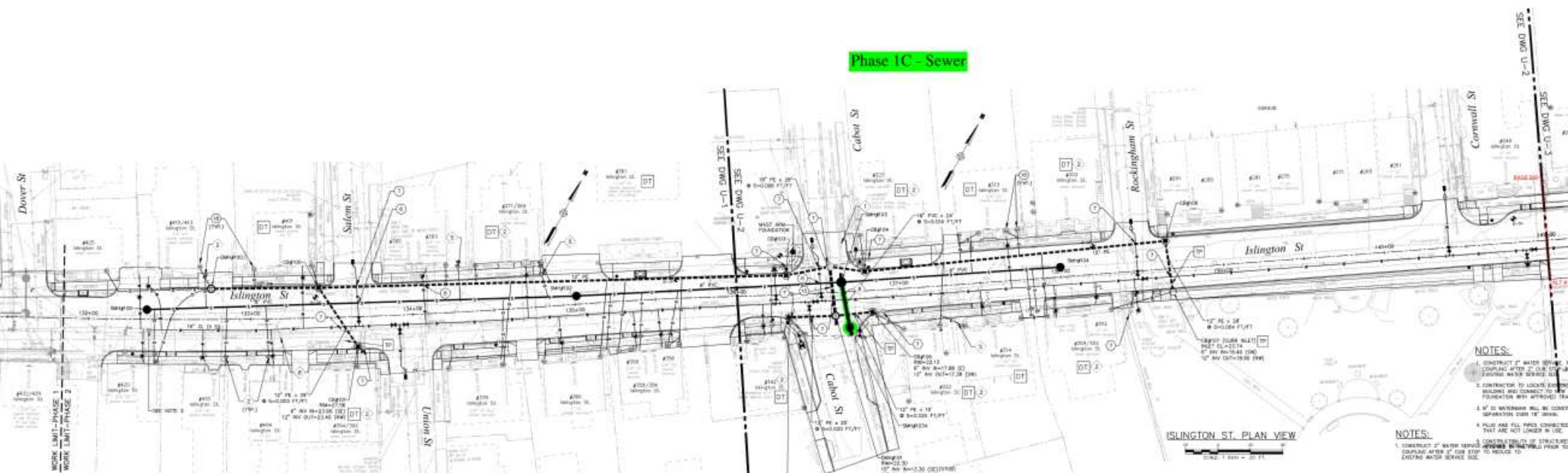
Phase 1A - Sewer



### Phase 1B - Sewer



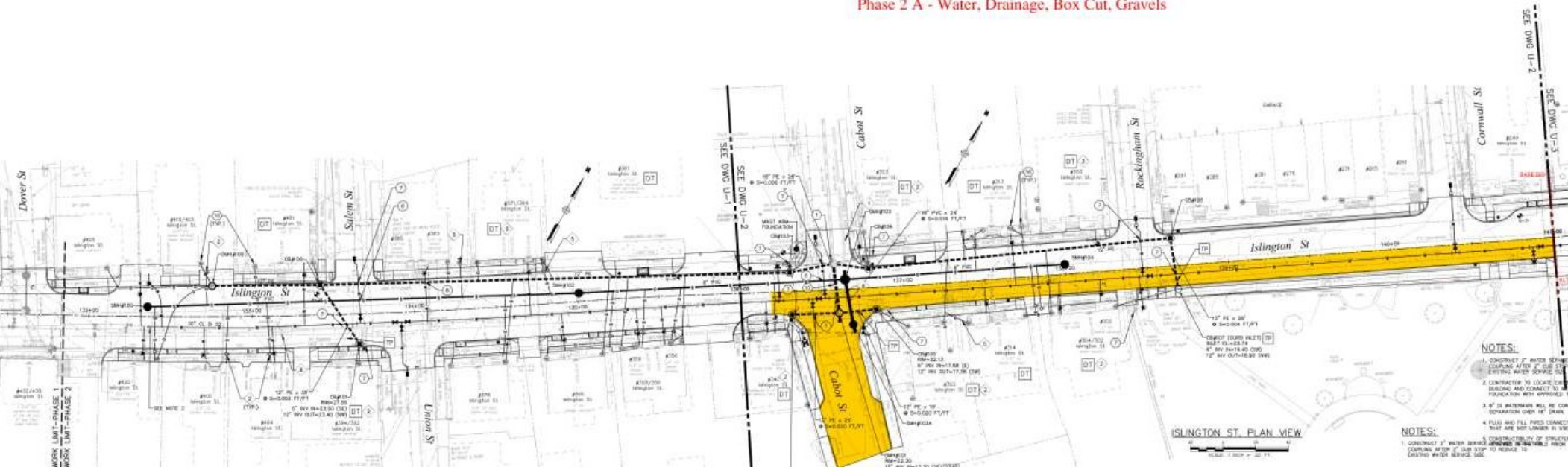
# 2023 – Project Area & Sequencing





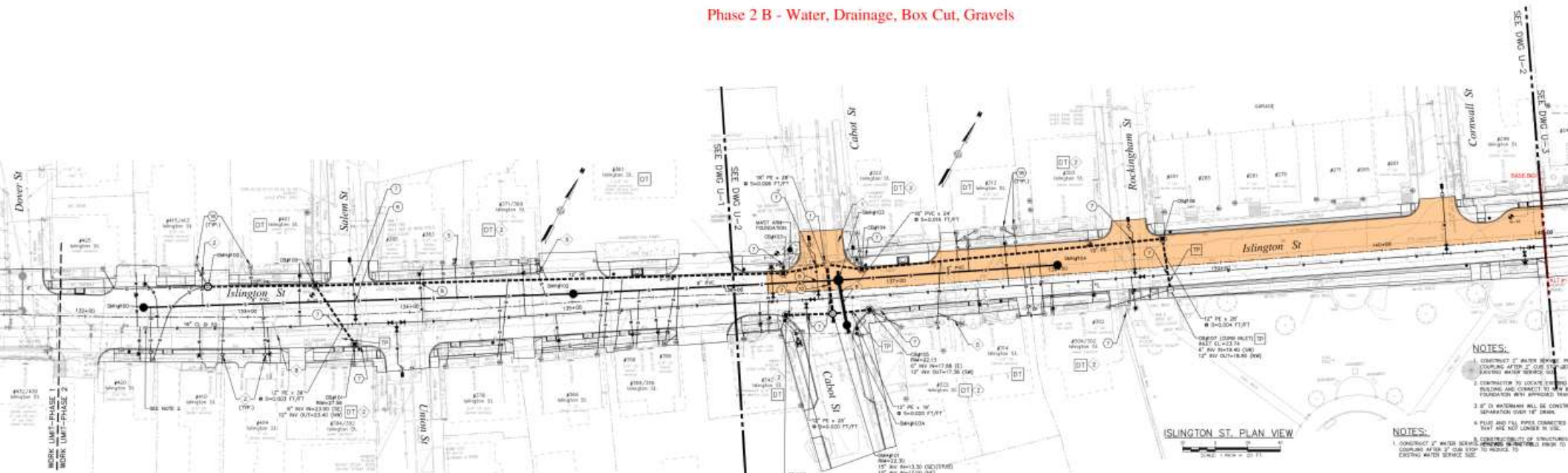
# 2023 – Project Area & Sequencing

Phase 2 A - Water, Drainage, Box Cut, Gravels



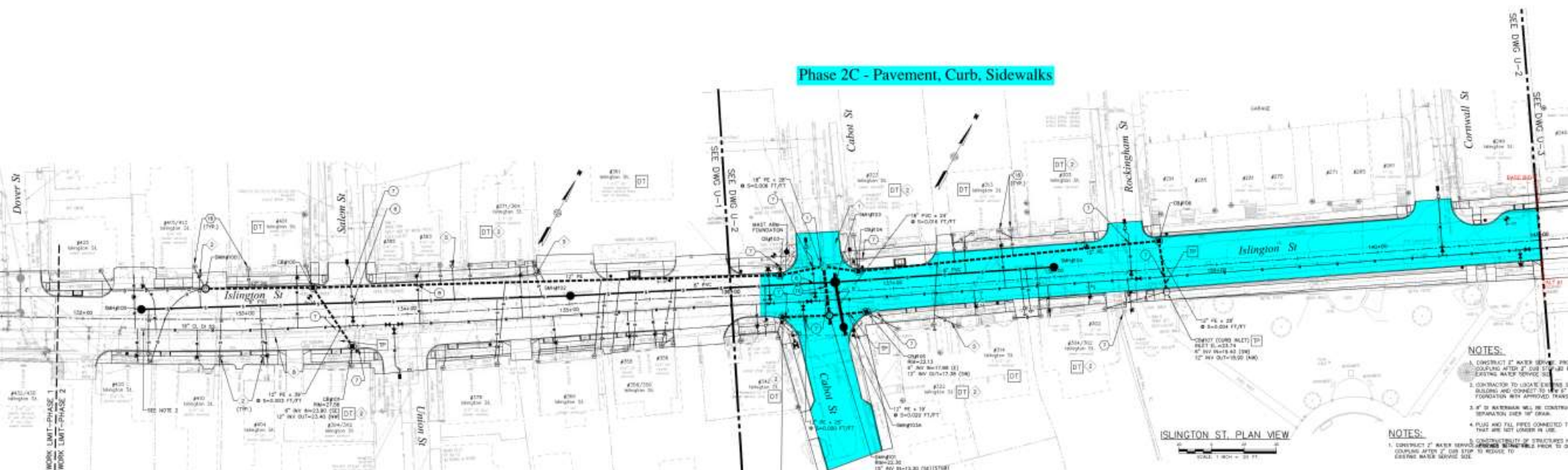
# 2023 – Project Area & Sequencing

Phase 2 B - Water, Drainage, Box Cut, Gravels





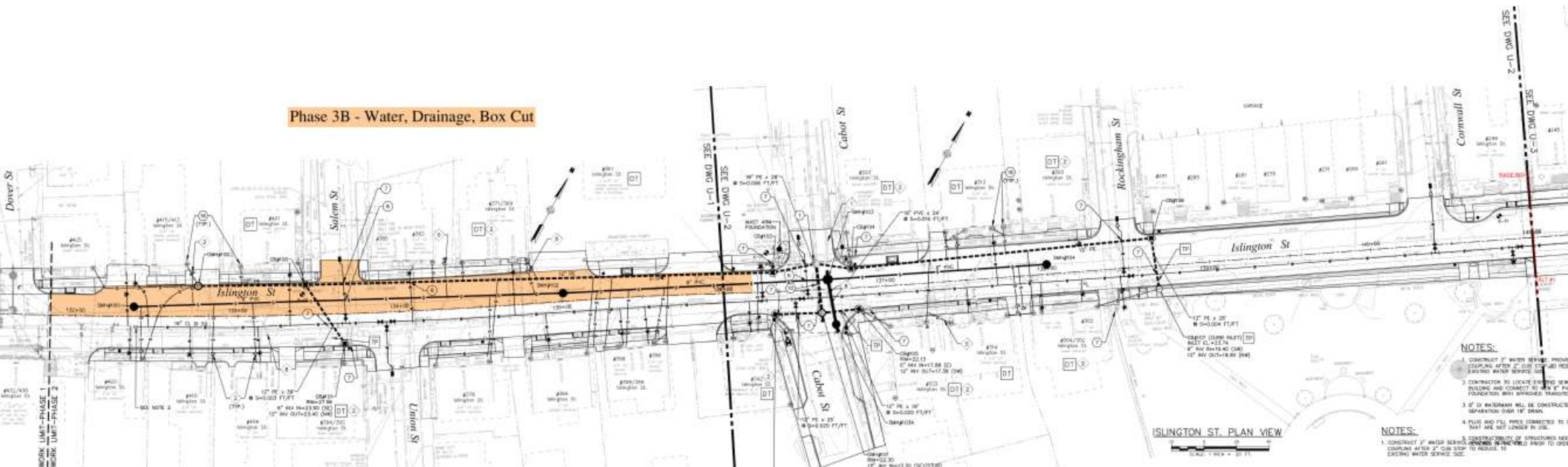
# 2023 – Project Area & Sequencing



# 2023 – Project Area & Sequencing



# 2023 – Project Area & Sequencing





### Phase 3C - Pavement, Curb, Sidewalks







Sewer main installation



Connection to existing sewer penetration



# Typical Private Property Impacts



Coring new service penetration through foundation



# Typical Private Property Impacts



New Sewer Service through brick driveway

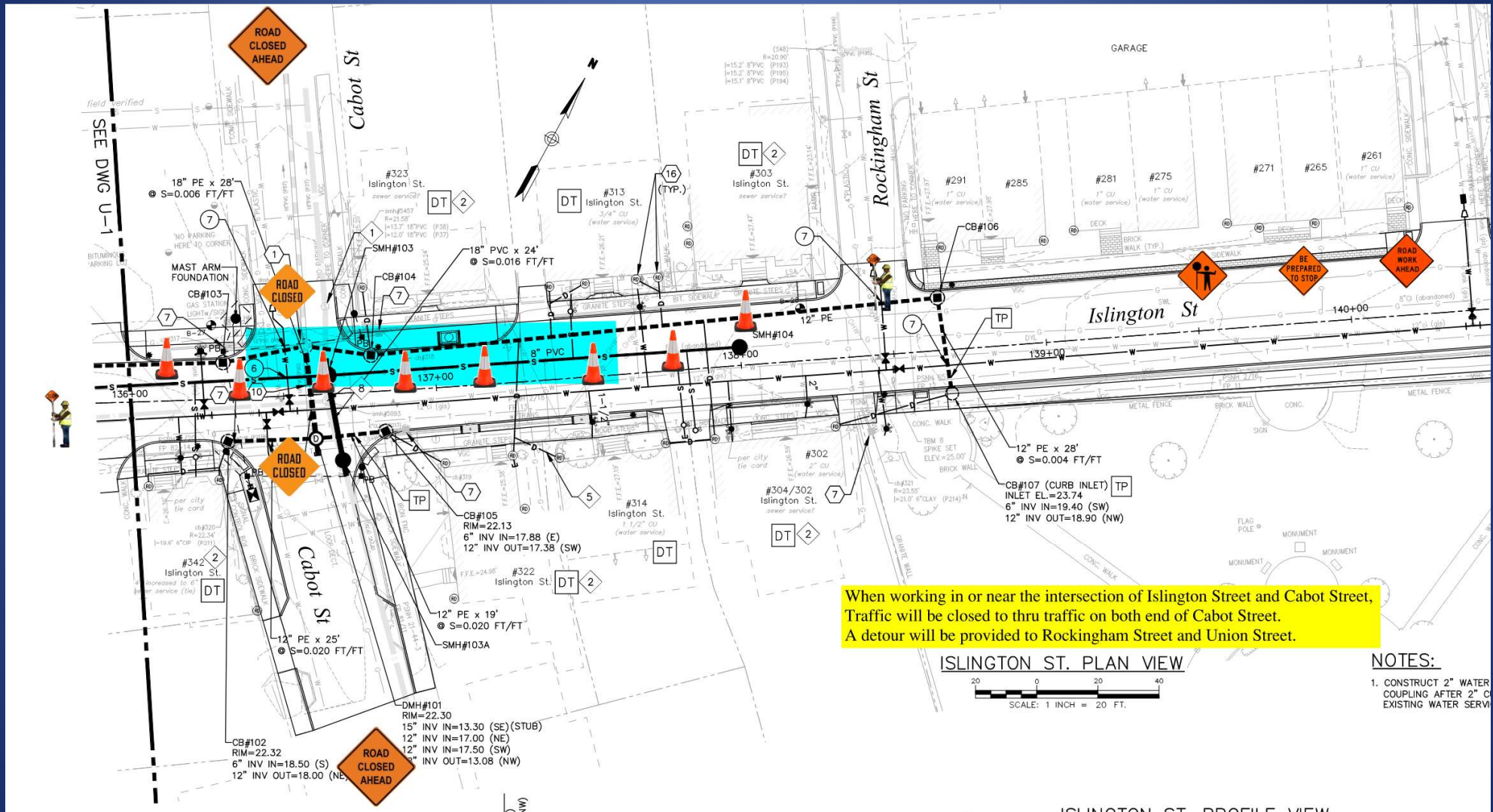
# Traffic Patterns



## Traffic Patterns

- Islington Street one lane alternating
  - Between Dover Street and Cornwall Street
  - No detour
  - Two way traffic to be restored for nights and weekends

# Traffic Patterns



## Distribution of Public Information

- Field Personnel (Door to Door)
  - Brad Chareth – Underwood
  - Roger Rivet – Severino
- Message Boards
- Social Media from COP Twitter
- Project Web Page (weekly updates)
- E-mail distribution lists
  - E-mail Stephanie Seacord to be added to the distribution list: [sseacord@cityofportsmouth.com](mailto:sseacord@cityofportsmouth.com)

# For General Project Information/Updates:

<https://www.cityofportsmouth.com/publicworks/islington-street-corridor-design-project>

City of PORTSMOUTH NH

DEPARTMENT OF PUBLIC WORKS


Operations Services Resources Projects MapGeo Contact

ISLINGTON STREET CORRIDOR PROJECT

The project area for the first phase of construction includes Islington Street from Bartlett Street to the Route 1 Bypass. Work will include replacement of underground utilities (water sewer drain), roadway reconstruction, curbing and sidewalk installations, and landscaping improvements (ornamental lighting, street trees, benches, etc.) and will be a large step in the revitalization of the West End neighborhood. The goal of this project is to create a "complete street" and will include improvements to the streetscape, traffic signals, utilities, bicycle/pedestrian facilities, transit and vehicular roadway.

The design incorporates the recommendations of several planning studies such as the 2009 Islington Street Improvement Action Plan, 2014 Bicycle/Pedestrian Plan and the "character-based" zoning public charrette. Utility design includes the design of drinking water, sanitary sewer and storm drainage improvements, as well as utility coordination and design for natural gas, communications and electrical relocations of infrastructure. The design effort also includes improvements to parking and vehicular/pedestrian uses to determine proper lane widths, sidewalk widths, intersection designs and roadbed and pavement types and thicknesses.

Comments regarding construction can be sent to Ryan Flynn, the City's Construction Project Coordinator (contact information at the bottom of this page).



RELATED LINKS

- [Islington Street Corridor Character-Based Zoning](#)
- [Bicycle/Pedestrian Plan](#)

City of PORTSMOUTH NH | DEPARTMENT OF PUBLIC WORKS

Operations Services Resources Projects MapGeo Contact

CURRENT ACTIVITY

Week of March 9th, 2020

**Upcoming Work**

**Sewer, water, and drainage main installation is tentatively scheduled to resume the week of April 6th.** Minor preparatory operations (layout, pavement saw cutting, exploratory excavations and drilling, etc.) may begin before then with only minor traffic impacts.

**Water Service Interruptions**

No water service interruptions are anticipated at this time. Owners will be notified 48 hours in advance of any scheduled water service interruptions.

**Traffic Patterns**

New traffic patterns/detours will be implemented this year to accommodate new work zones. See below for additional information on detour routes.

**Work Zones**

TBD

**General Notes**

If you have any questions or concerns, please contact Ryan Flynn, construction Project Manager at 766-1413.



Questions?