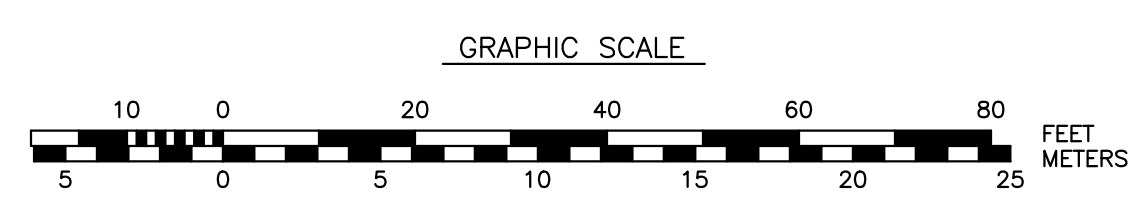


- NOTES:**
- LUMINARE ON UTILITY POLES SHALL BE 250 WATT LED SEMI CUTOFF ON 12' ALUMINUM BRACKET ARM.
 - SEE DETAIL SHEET FOR SOLAR POWERED RRFB.
 - SITE DISTANCE IN BOTH DIRECTIONS ON OCEAN ROAD ARE GREATER THAN 500'.




 DEPARTMENT OF
 PUBLIC WORKS
 CITY OF PORTSMOUTH, NH
 680 PEVERLY HILL ROAD
 603-427-1530

A	ISSUED FOR REVIEW	MRB	08/22/22
NO.	REVISIONS	APP'D	DATE
PROJECT: 202x SIDEWALK PROJECTS MAPLE HAVEN			
TITLE: PROPOSED OCEAN ROAD CROSSING			
DRAWING SCALE:	AS SHOWN	DATE:	AUGUST 2022
PROJECT NO.:	XXXX	SHEET:	C-110
APPROVED BY:	MRB		