

# PORTSMOUTH, NEW HAMPSHIRE

## Water has a memory...

Strawbery Banke Museum's historic houses – some of Portsmouth's most valuable and irreplaceable heritage – are being damaged by the impact of sea level rise.

Right now.

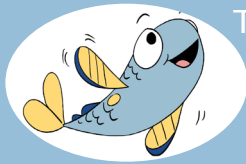
This exhibit explains the ways Strawbery Banke has joined forces with the City and other key organizations from around the region who are actively involved with measuring, analyzing and adapting to the impacts.



**Water** has a **Memory**

PRESERVING STRAWBERRY BANKE  
AND PORTSMOUTH FROM SEA LEVEL RISE

[STRAWBERRYBANKE.ORG](http://STRAWBERRYBANKE.ORG)



THINK BLUE!

In 2007, the City of Portsmouth unanimously declared its commitment to becoming more sustainable, as an Eco-Municipality. This role includes monitoring climate change and coastal resiliency, implementing green building projects and exploring other initiatives such as considering the impact of single-use disposables.

This exhibit invites visitors to “Think Blue” and consider what they can do to spread the word, share their stories and become part of the solution.

*Exhibit sponsors include:*

Jameson & Priscilla French

The Roger R. and Theresa S. Thompson  
Endowment Fund

The Barbara and B. Allen Rowland Fund of the  
New Hampshire Charitable Foundation

Allison Potter

Pollution Control

City of Portsmouth

Think Blue: <https://tinyurl.com/334wvr7k>

Geospatial Science Center  
University of New Hampshire



**STRAWBERRY**  
**BANKE** PORTSMOUTH  
NEW HAMPSHIRE

14 Hancock Street  
Portsmouth NH  
03801  
603.433.1100  
[StrawberyBanke.org](http://StrawberyBanke.org)