

Maple Haven Sidewalk Reconstruction Public Meeting

*Wednesday, March 23rd 2022, Portsmouth NH Fire Station 2
6:30 PM*

Portsmouth Department of Public Works

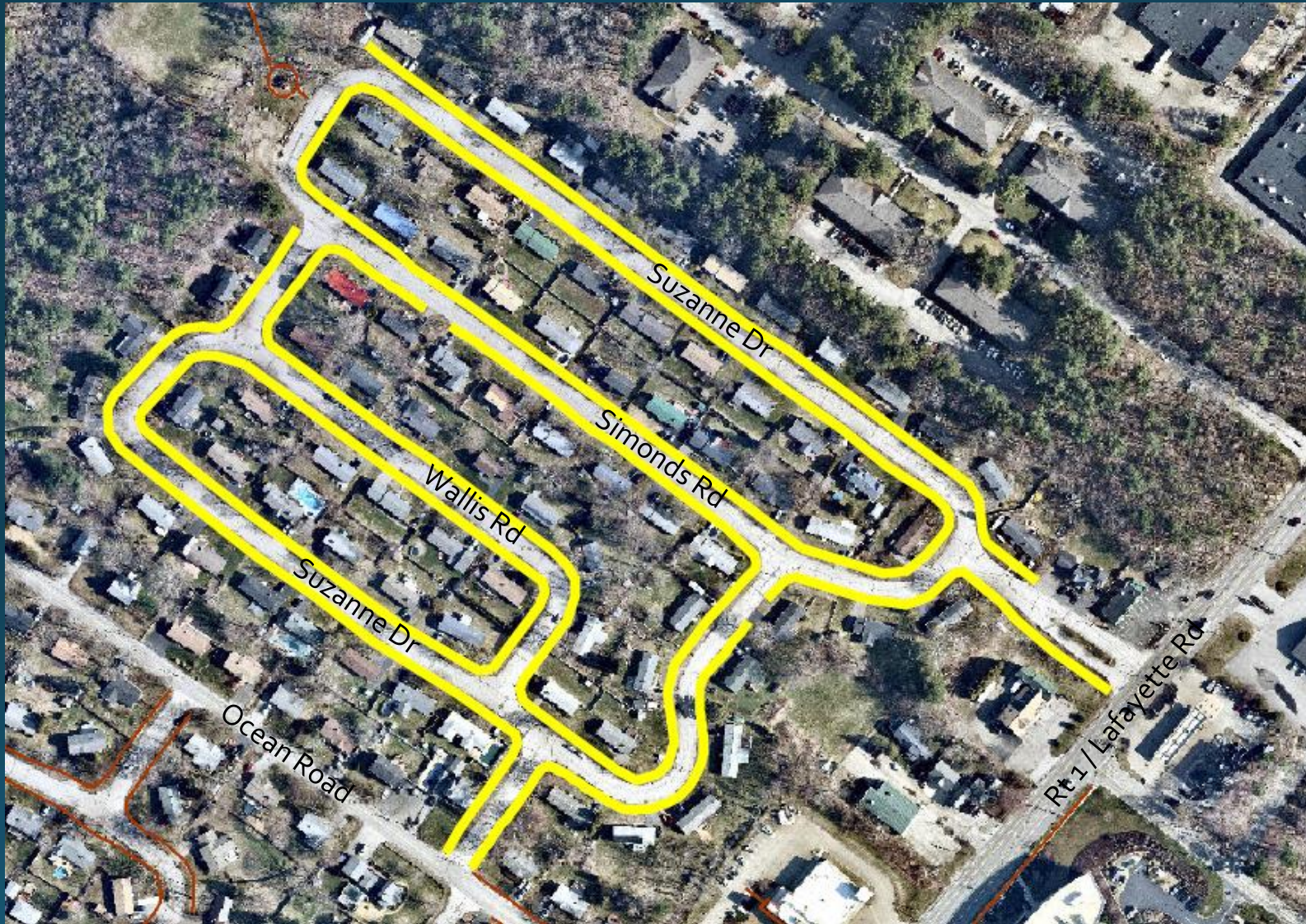
Maple Haven History

- Built between late 1940's to late 1950's
- Winchester Street built first; hence lack of sidewalks



Maple Haven, Circa 1956

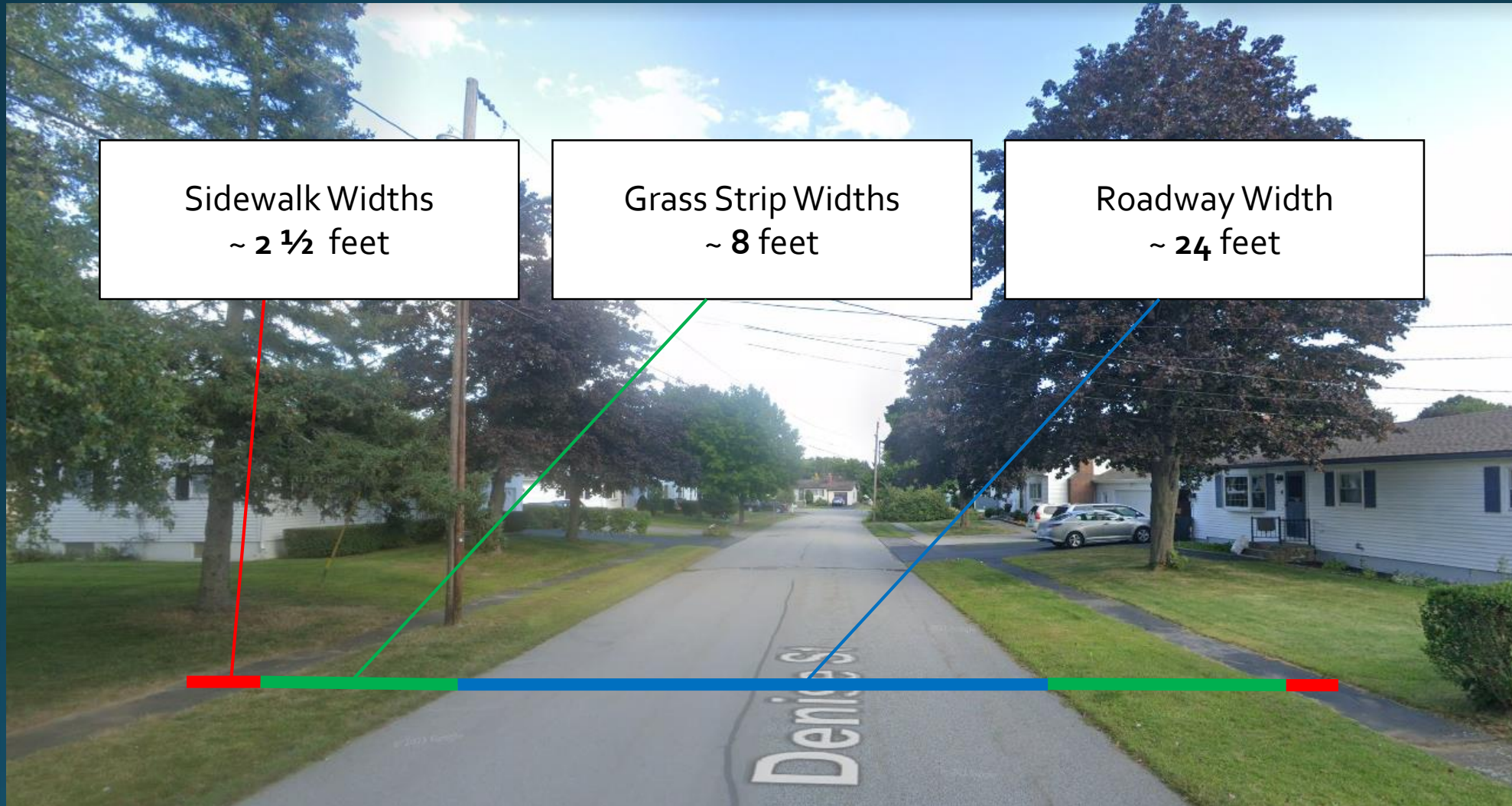
Current Sidewalk Locations, North Side



Current Sidewalk Locations, South Side



General Roadway Cross Section



Current Sidewalk Conditions

- 2-3 Feet Wide
- Asphalt
- Heaved by Tree Roots
- Moss / Soil Covered
- Sidewalk Drainage



Current Conditions



Survey Results

- Majority Confirmed that Sidewalks are in Poor Condition
- Poor Condition of Sidewalk Impacts Usage
- 80% of Respondents Favored Improved Sidewalks

Proposed Upgrades

- 5.5' widths
- Americans with Disabilities Act (ADA) Compliant
- Concrete



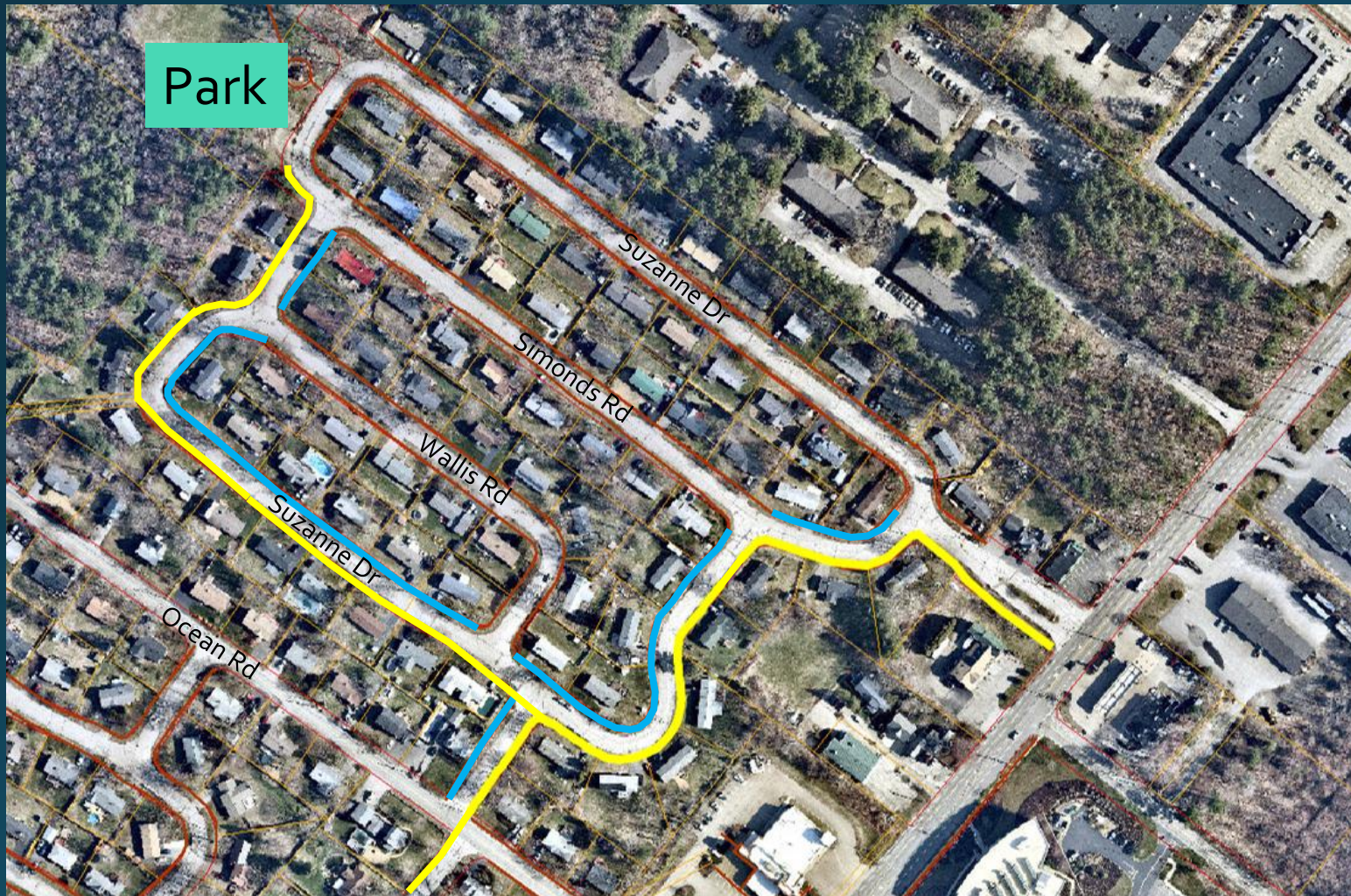
Considerations for Proposed Layout

- Impact the Fewest Number of Trees
- Maximize Number of Houses with Replaced Sidewalks
- Walkability Throughout Entire Neighborhood (North and South)
- Available Funding

Proposed Work for Phase 1 Maple Haven North Side

Approx. 2,600
Linear Feet of New
Concrete Sidewalk

Remove Redundant
Sidewalk on
Opposite Side

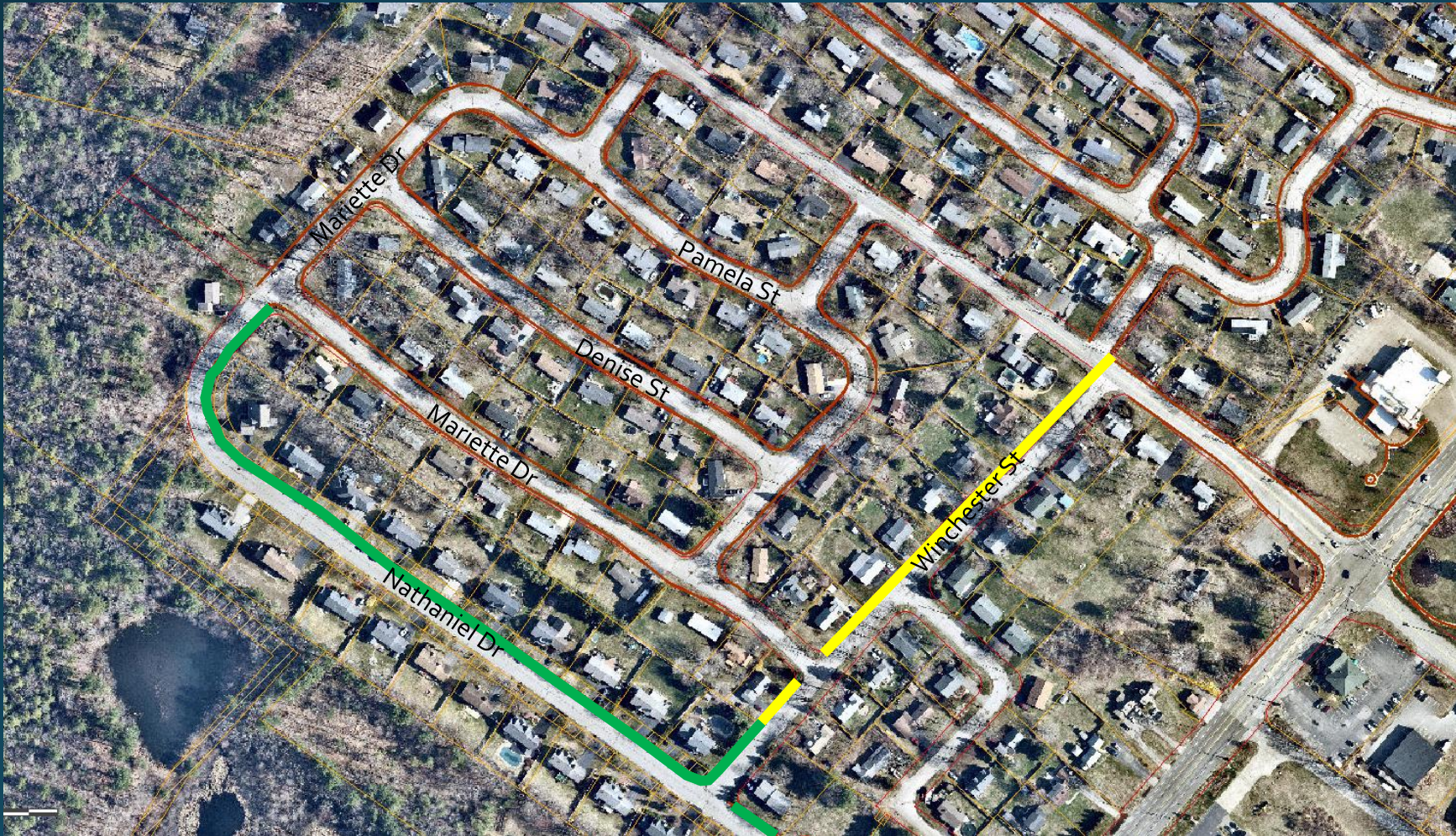


Legend

Replacement Sidewalks : —

Remove Existing Sidewalks : —

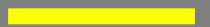
Proposed Locations for Phase 1 Maple Haven South Side



Approx. 900 Linear
Feet of New
Concrete Sidewalk

Legend

New Concrete
Sidewalks :



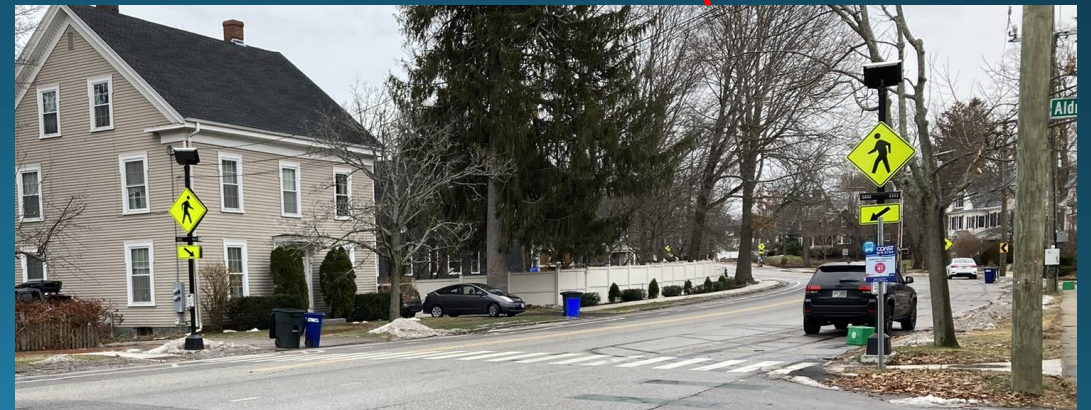
Existing Concrete
Sidewalks:



Ocean Road Crossing

Request NHDOT
Permission for
Crosswalk

Request NHDOT
Permission for
Pedestrian
Activated Flashing
Beacon



Sidewalk Placement



Existing Sidewalk:
2 ½ feet wide

New Sidewalk:
5 ½ feet wide

2 ½ feet wide

5 ½ feet wide



Tree Impacts



Existing Sidewalk:
2 1/2 feet wide

New Sidewalk:
5 1/2 feet wide

Tree Would Necessitate Removal

Tree Could Likely Remain

2 1/2 feet
wide

5 1/2 feet wide



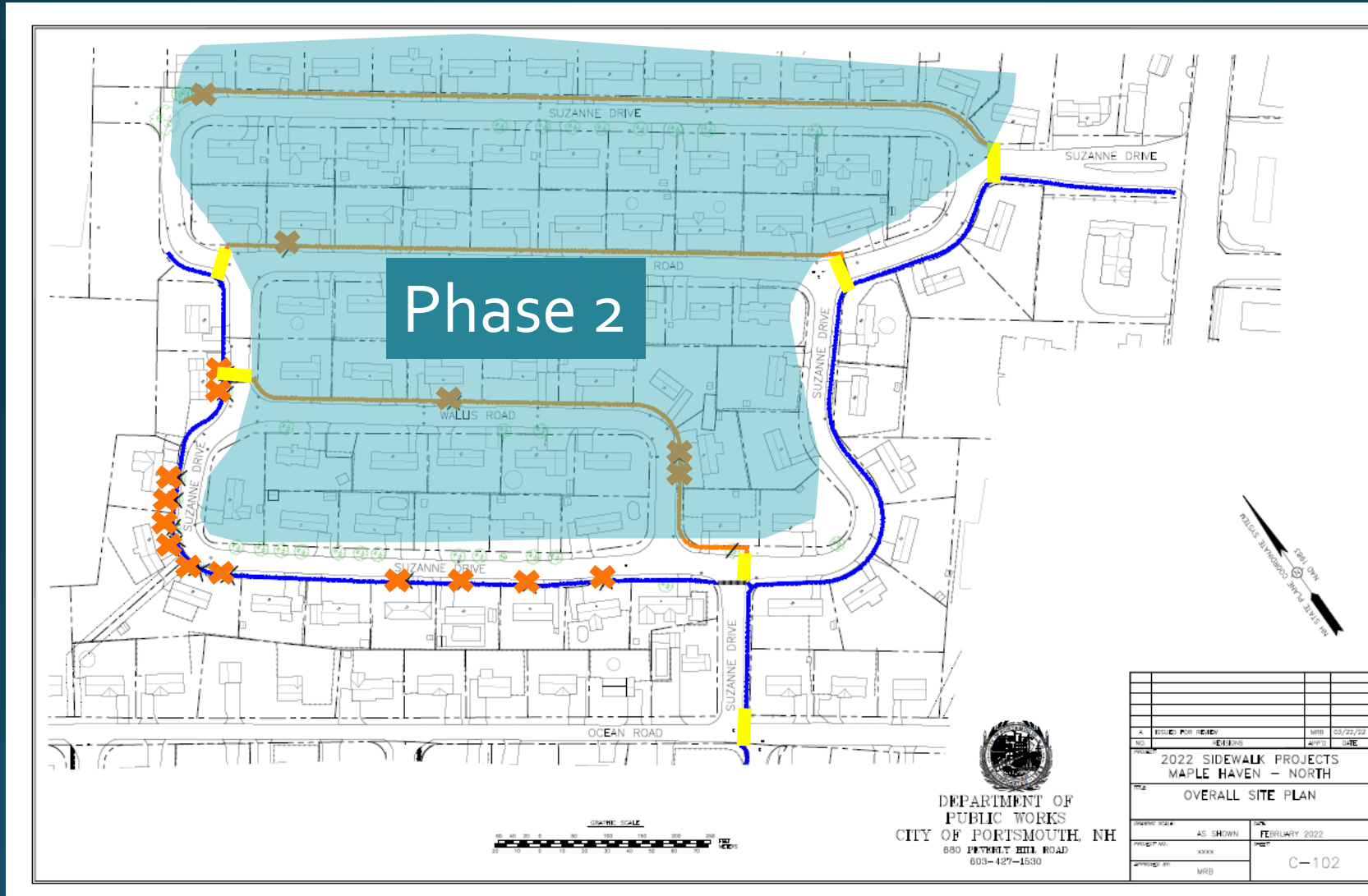
Tree Impacts



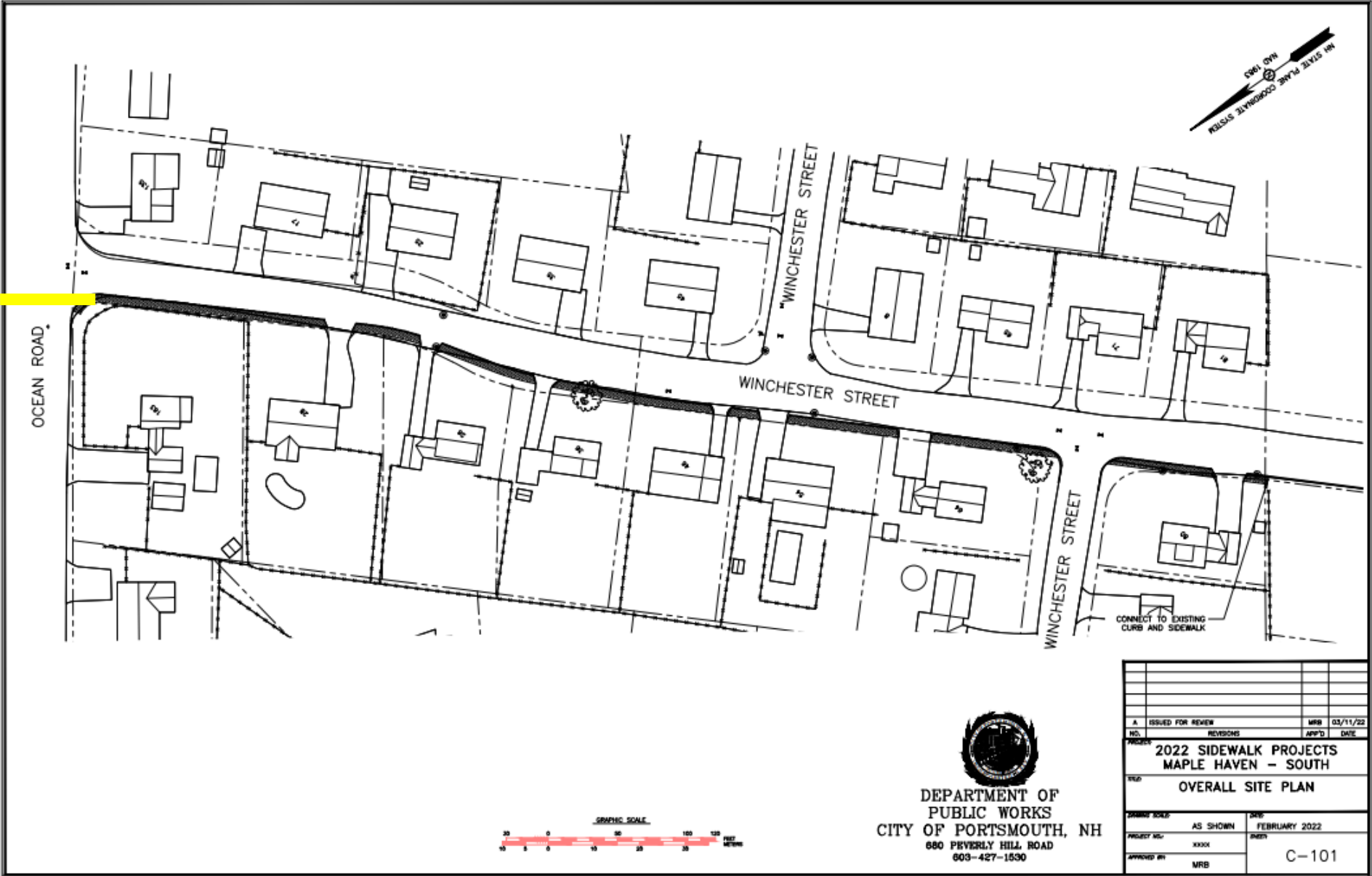
Method to Avoid
Tree Removal



Proposed Design Plan Maple Haven North Side



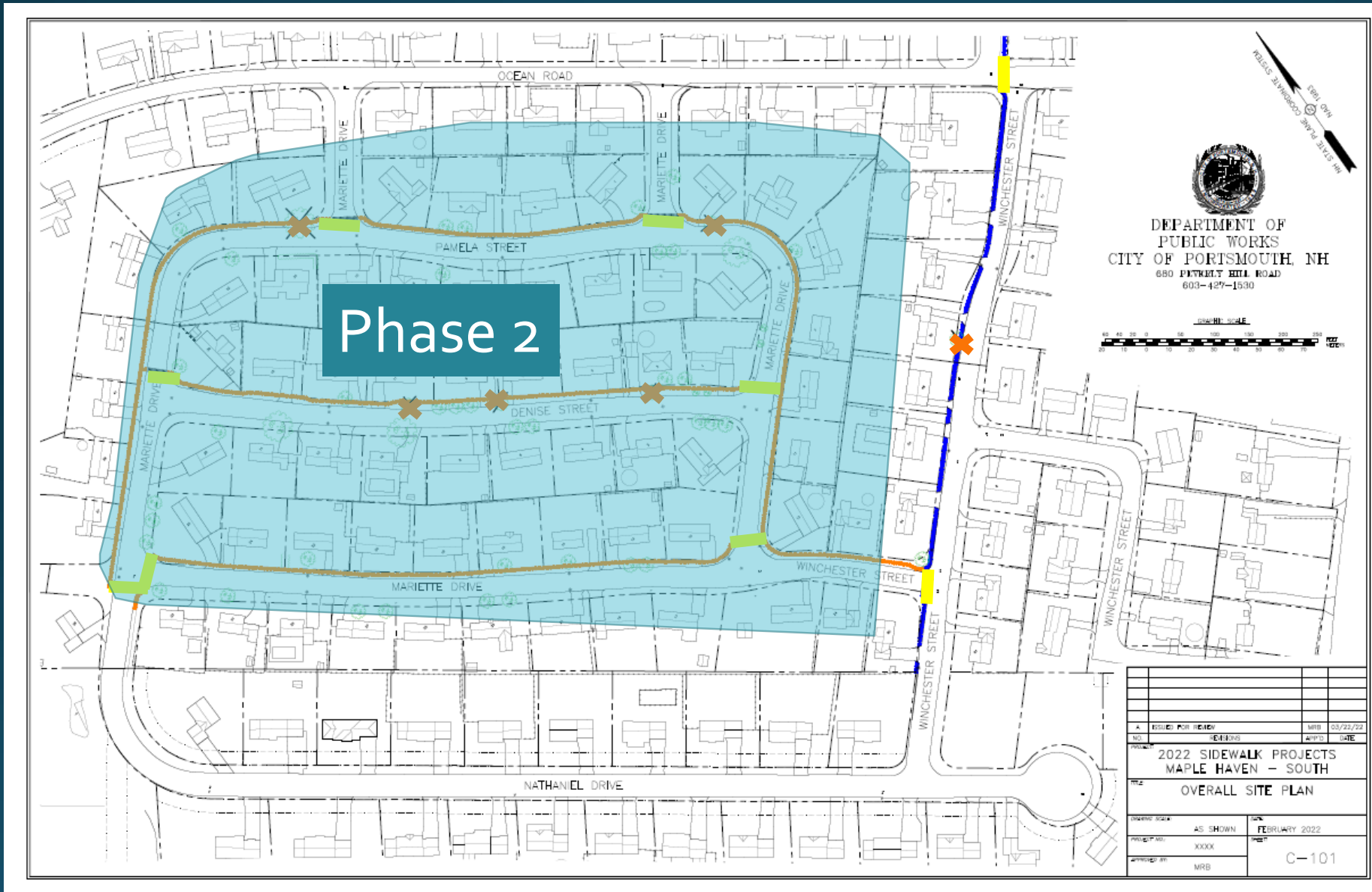
Proposed Design Plan Winchester Street



Crosswalk (TYP)

Proposed Design Plan Maple Haven South Side

Crosswalk (TYP)



Next Steps

- Public Input
 - Complete Preliminary Design
 - Tree and Public Greenery Committee
 - Finalize Design
 - Advertise bids
-
- Anticipated Phase 1 Construction in Summer / Fall 2022

Public Input



Advisory Pedestrian Shoulders

**Alternative to
Avoid Tree Impacts**

- No Effect to Trees
- Removal of Existing Sidewalks
- No Physical Protection From Traffic

