

# Spring Project Start-Up Information

## Islington Street Corridor Improvements – Phases 1A & 1B



March 24, 2021

Purpose of tonight's meeting is to review:

- Project Team
- Limits of Work
- Anticipated Start-up Schedule
- Traffic Patterns
- Distribution of Public Information
- Questions

## Project Team Contacts

City of Portsmouth DPW: 427-1530

Underwood Engineers, Inc.: 436-6192

Severino Trucking Co. Inc.: 483-2133

# City of Portsmouth DPW

- Peter Rice – Director of Public Works
- David Desfosses – Project Manager
  - Primary Project Contact
- Eric Eby – Parking and Transportation Engineer

# Underwood Engineers, Inc. Contacts

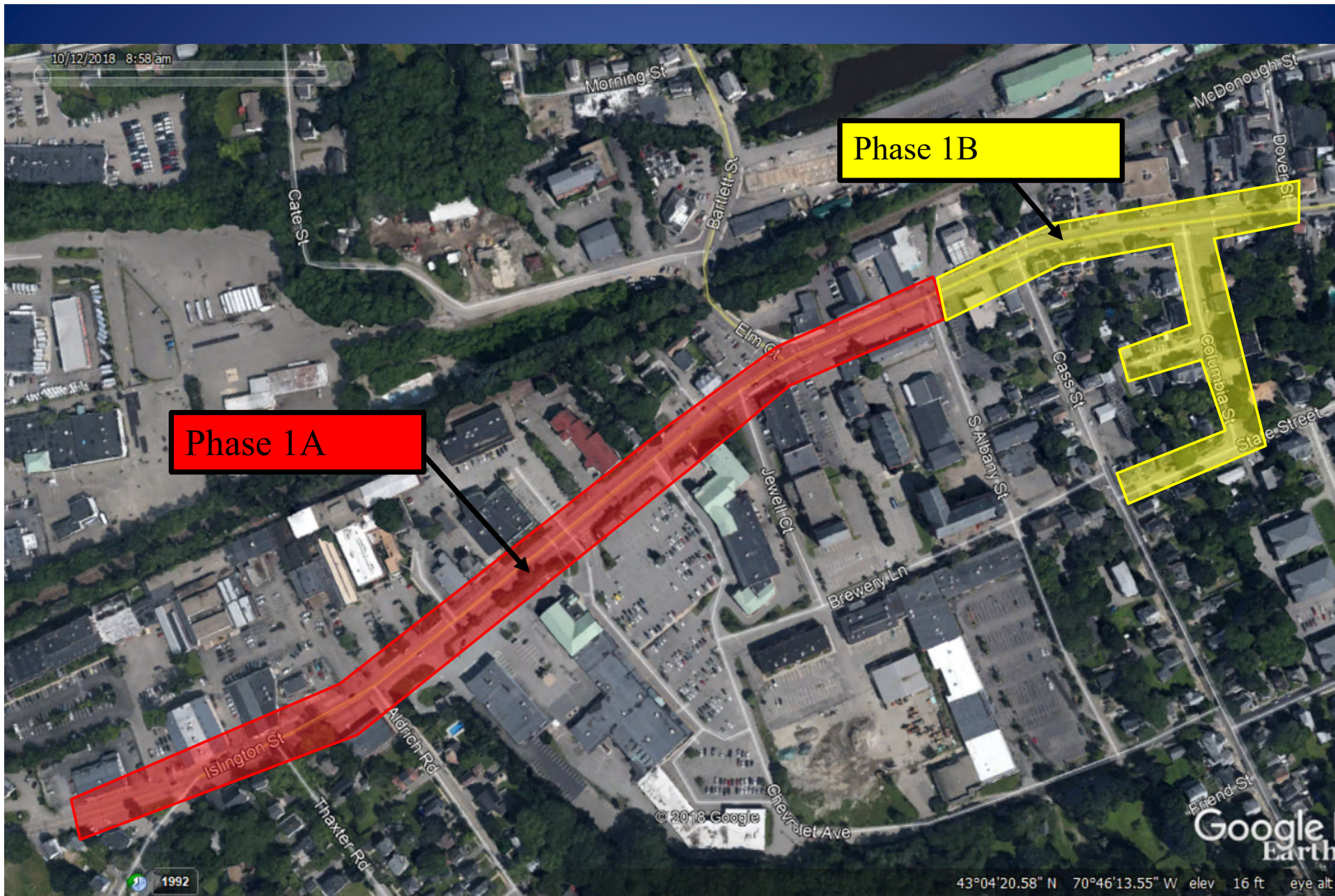
- Dan Rochette – Project Manager
- Matt Hall – Project Engineer
- Brad Chareth – Resident Project Representative

# Severino Trucking Co. Inc. Contacts

- Tom Severino – Vice President
- Mark Rainey – Project Manager
- Roger Rivet – Project Superintendent
  - Cell Phone: (603)-234-0919

# Project Limits







## Project Limits

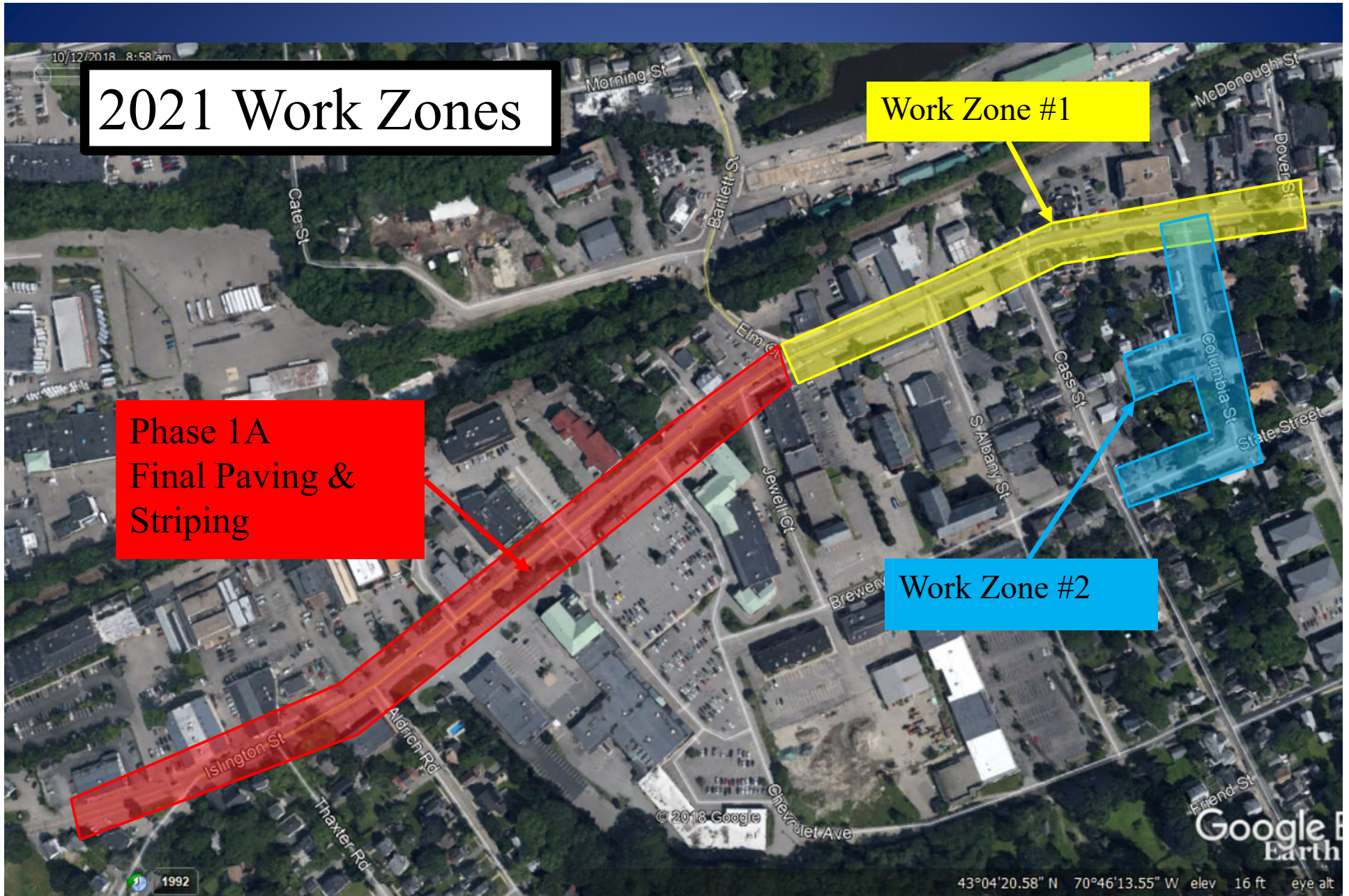
- Phase 1A: Substantially Complete
  - Sidewalk construction remains between Bartlett Street & Albany Street
  - Final paving & striping this year
- Phase 1B:
  - Utility work begins March 29<sup>th</sup>

# 2021 Work Zones

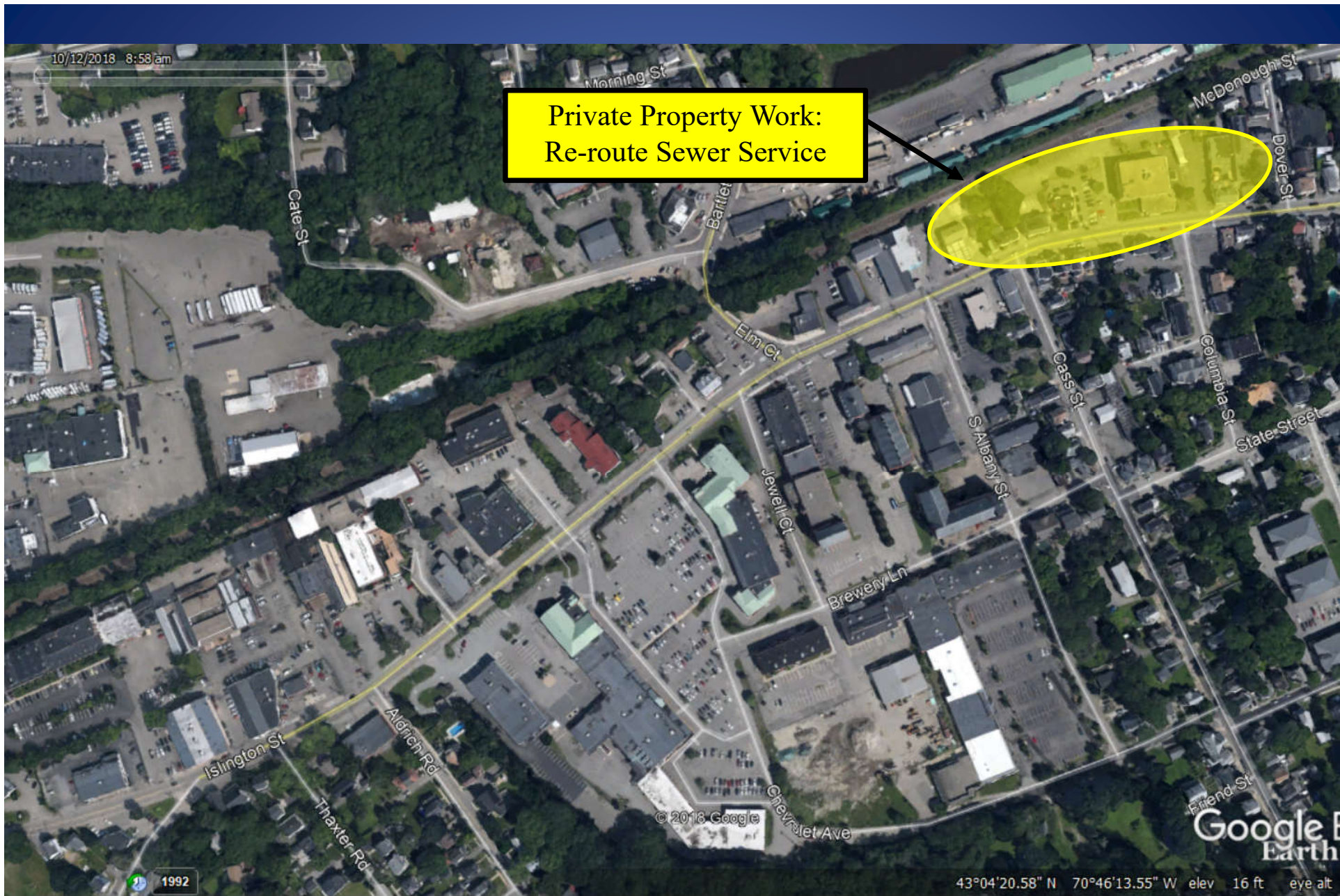
Phase 1A  
Final Paving &  
Striping

Work Zone #1

Work Zone #2



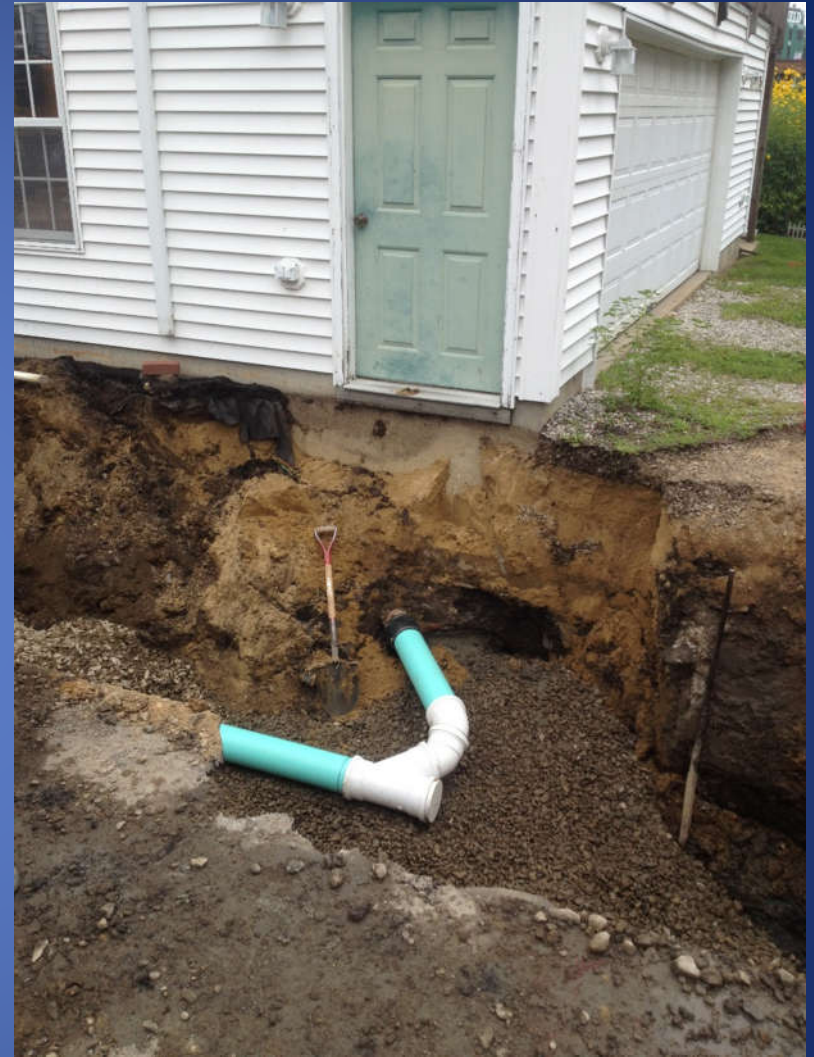








Sewer main installation



Connection to existing sewer penetration



# Typical Private Property Impacts



Coring new service penetration through foundation

# Anticipated Start-up Schedule

## Schedule

- Unutil gas on Columbia St – Started March 22<sup>nd</sup>
- Work Zone #1: Islington Street - March 29<sup>th</sup>
  - Albany Street to Dover Street
  - Perforating Ledge
  - Temporary Water systems
  - New Sewer Mains (~May 1<sup>st</sup>)
  - Roadway reconstruction start anticipated early August 2021
- Work Zone #2: Columbia Street - April 29<sup>th</sup>
  - Temporary water systems
  - Sewer mains (~June 1<sup>st</sup>)
  - Roadway reconstruction anticipated Mid-September 2021

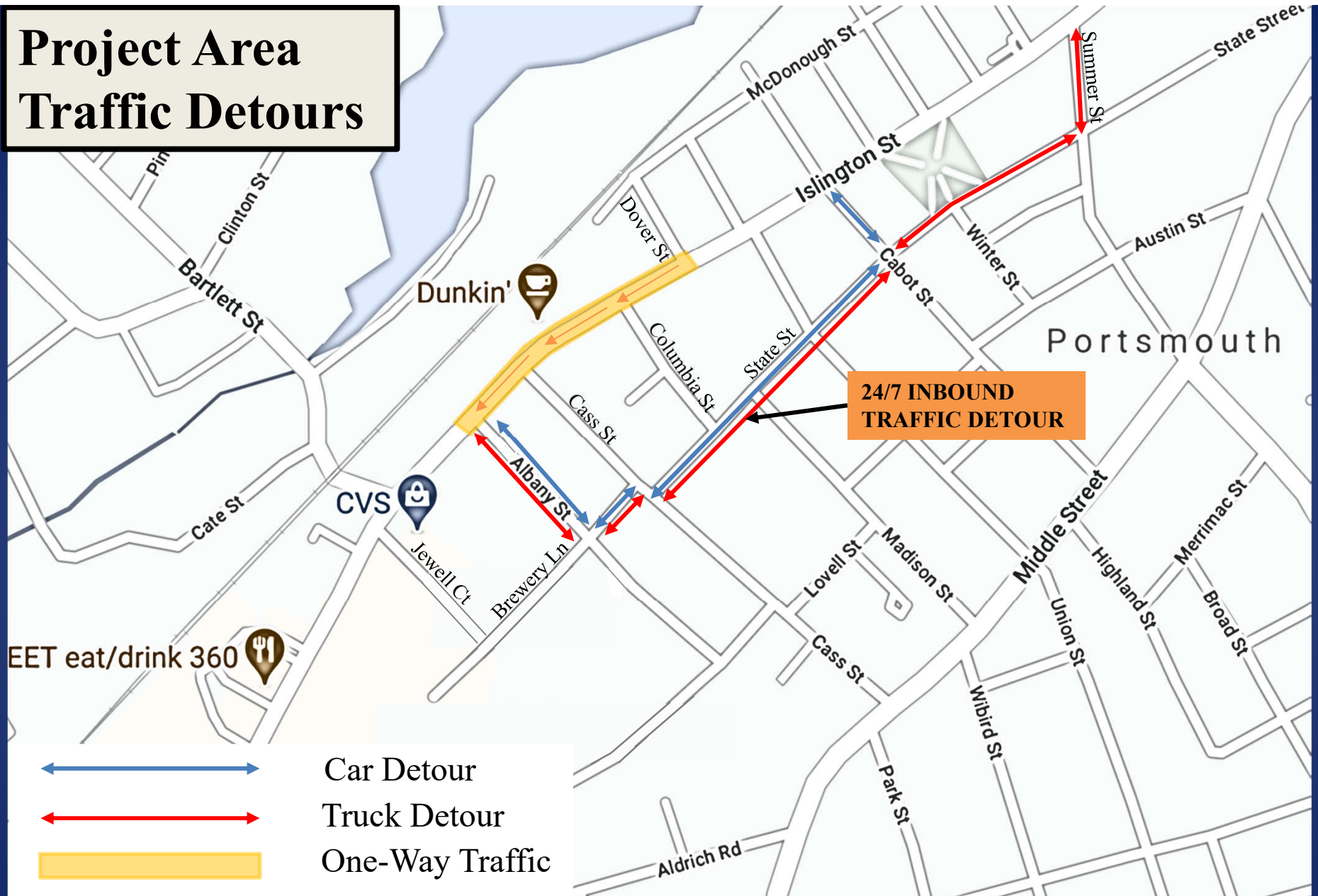
# Traffic Patterns



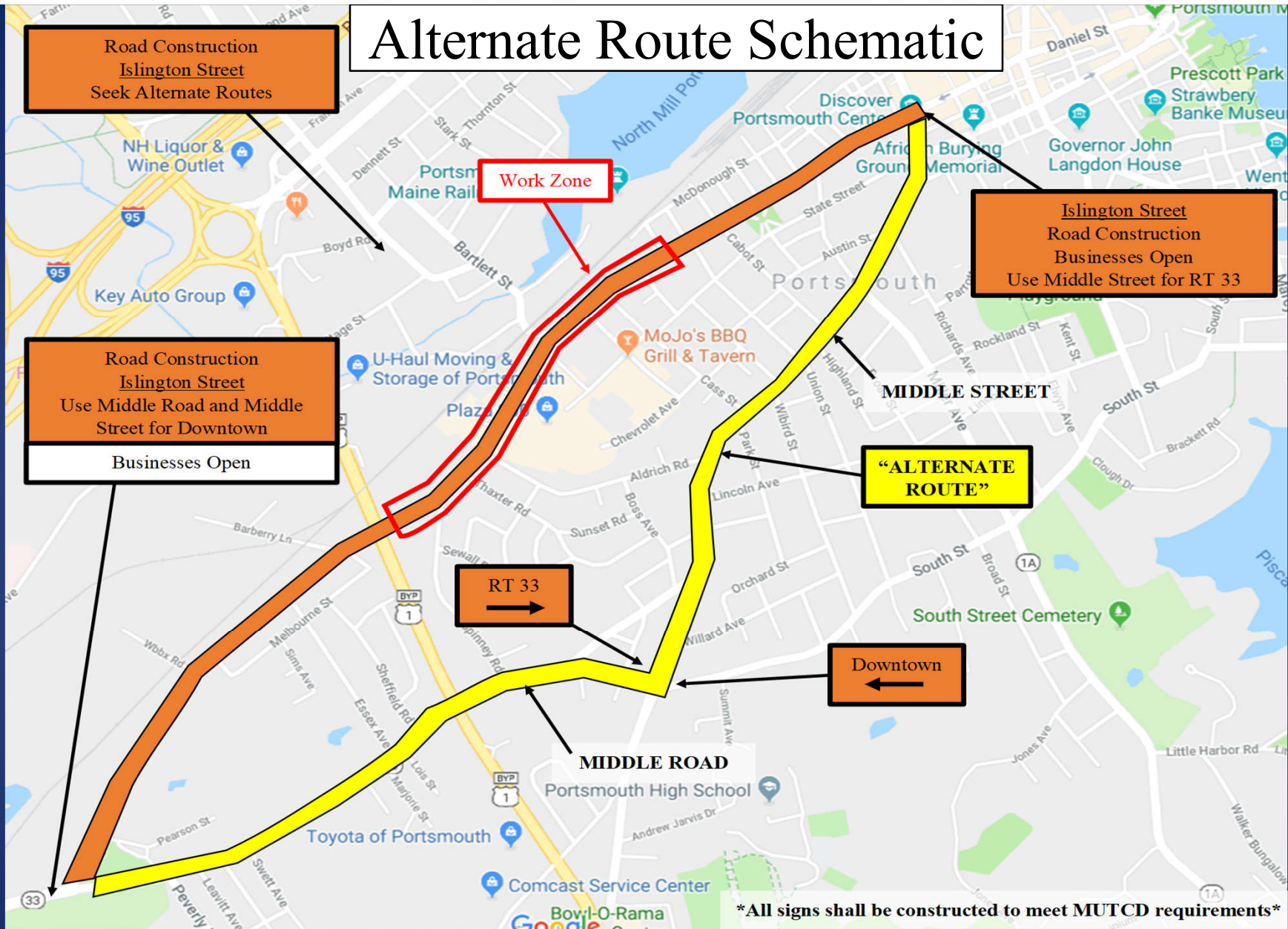
## Traffic Patterns

- Islington Street one way outbound
  - Between Dover Street and Albany Street
  - Car detour - Albany/Cass/State/Cabot
  - Truck detour – Islington/Albany/Cass/State/Summer
  - To remain in place nights and weekends during sewer construction periods
- Columbia Street Area – Closed to through traffic (local traffic only)
  - During working hours

# Project Area Traffic Detours



# Alternate Route Schematic





## Distribution of Public Information

- Field Personnel (Door to Door)
  - Brad Chareth – Underwood
  - Roger Rivet – Severino
- Message Boards
- Social Media from COP Twitter
- Project Web Page (weekly updates)
- E-mail distribution lists
  - E-mail Stephanie Seacord to be added to the distribution list: [sseacord@cityofportsmouth.com](mailto:sseacord@cityofportsmouth.com)



# For General Project Information/Updates:

<https://www.cityofportsmouth.com/publicworks/islington-street-corridor-design-project>

City of PORTSMOUTH NH

A A A


DEPARTMENT OF PUBLIC WORKS

Search

Operations Services Resources **Projects** MapGeo Contact

## ISLINGTON STREET CORRIDOR PROJECT

The project area for the first phase of construction includes Islington Street from Bartlett Street to the Route 1 Bypass. Work will include replacement of underground utilities (water sewer drain), roadway reconstruction, curbing and sidewalk installations, and landscaping improvements (ornamental lighting, street trees, benches, etc.) and will be a large step in the revitalization of the West End neighborhood. The goal of this project is to create a "complete street" and will include improvements to the streetscape, traffic signals, utilities, bicycle/pedestrian facilities, transit and vehicular roadway.



**RELATED LINKS**

- [Islington Street Corridor Character-Based Zoning](#)
- [Bicycle/Pedestrian Plan](#)

The design incorporates the recommendations of several planning studies such as the 2009 Islington Street Improvement Action Plan, 2014 Bicycle/Pedestrian Plan and the "character-based" zoning public charrette. Utility design includes the design of drinking water, sanitary sewer and storm drainage improvements, as well as utility coordination and design for natural gas, communications and electrical relocations of infrastructure. The design effort also includes improvements to parking and vehicular/pedestrian uses to determine proper lane widths, sidewalk widths, intersection designs and roadbed and pavement types and thicknesses.

Comments regarding construction can be sent to Ryan Flynn, the City's Construction Project Coordinator (contact information at the bottom of this page).

City of PORTSMOUTH NH | DEPARTMENT OF PUBLIC WORKS

A A A

Operations Services Resources **Projects** MapGeo Contact

## CURRENT ACTIVITY

### Week of March 9th, 2020

#### Upcoming Work

**Sewer, water, and drainage main installation is tentatively scheduled to resume the week of April 6th.** Minor preparatory operations (layout, pavement saw cutting, exploratory excavations and drilling, etc.) may begin before then with only minor traffic impacts.

#### Water Service Interruptions

No water service interruptions are anticipated at this time. Owners will be notified 48 hours in advance of any scheduled water service interruptions.

#### Traffic Patterns

New traffic patterns/detours will be implemented this year to accommodate new work zones. See below for additional information on detour routes.

#### Work Zones

TBD

#### General Notes

If you have any questions or concerns, please contact Ryan Flynn, construction Project Manager at 766-1413.

Questions?