

# Sagamore Avenue Sewer Extension

City of Portsmouth, NH

September 4, 2019

Terry Desmarais, PE  
Mike Theriault, PE

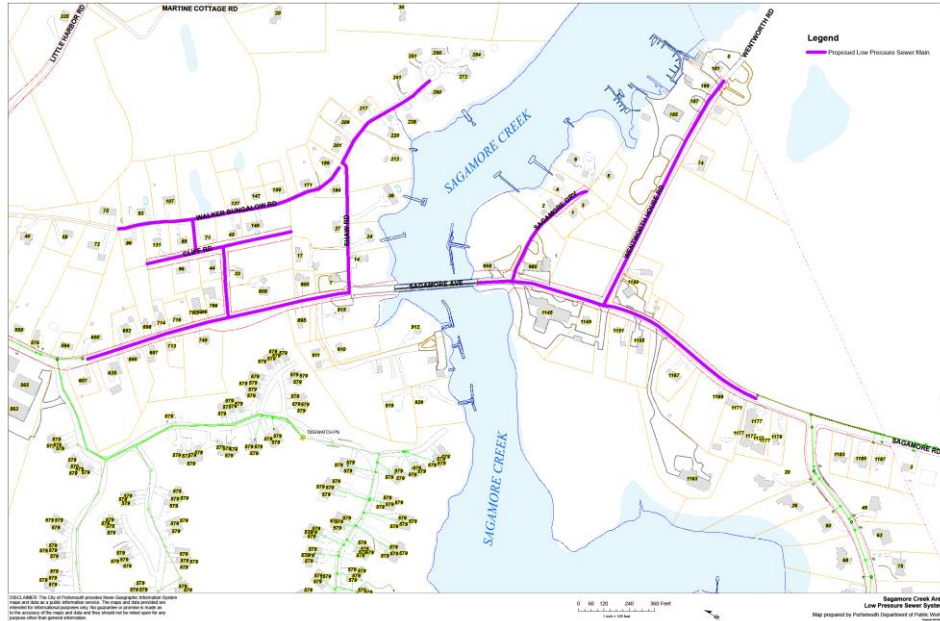


# Presentation Overview

---

**Project Overview & Goals**  
**Scope of Construction Work**  
**Key Issues**  
**Questions & Discussion**

# Overview



- Construction of new:
  - Low-pressure sewers
  - Sewer services to property line
- Pavement Restoration

# Goals



- **Comply with the City's Consent Decree requirements with the EPA**
  - **Consent Decree Second Modification in 2016 requires the City to construct Sagamore Ave Sewer Extension with completion by June 2022**
- **Improve water quality:**
  - **Address failed septic systems**
  - **Improve water quality in estuary**

# Scope of Project Work

---

## Preliminary Investigation and Design (Fall 2019 – Winter 2020)

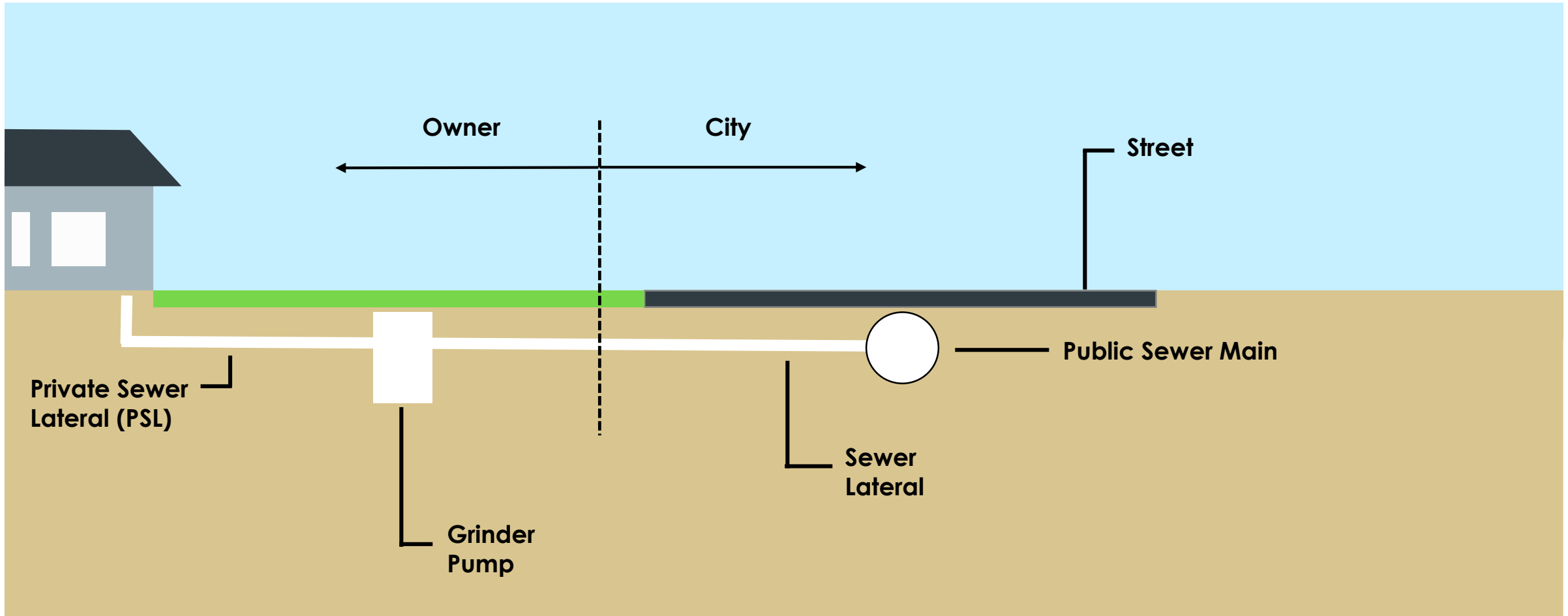
- Geotech borings and ledge probes along project route
- Survey and wetlands delineation
- Design Plans

## Construction (Summer 2020 – Summer 2022)

- Installation of:
  - Approximately 7,900 linear feet of new low-pressure sewers
  - Installation of approximately 103 new sewer service connections to the property lines for homes and businesses
- Ledge removal
- Restoration of pavement

# Scope of Construction Work

## Sewer System



# Sample Timeline

---

SEPT – NOV  
2019



Preliminary Investigation and Project Design

NOV  
2019



Approval from NHDES on Preliminary Design

FEB  
2020



Completion of Final Design

FEB – MAR  
2020



Project Bid Phase

MAR – APR  
2020



Award of Project To General Contractor And PUBLIC PRE-CONSTRUCTION MEETING

JUN  
2020



Construction Begins

# Contact Information

---

## ZACHARY CRONIN, EIT

Assistant City Engineer

zmcronin@cityofportsmouth.com

(603) 610-7304

Project Website:

<https://www.cityofportsmouth.com/publicworks/saga-more-ave-sewer-extension-project>



# DISCUSSION

---

# FAQ – Sewer Type

---

## Question

- Why low-pressure sewer system over conventional gravity sewer system?

## Answer

- In the past, an evaluation was completed to review the benefits of proceeding with a low-pressure sewer system vs. conventional sanitary (gravity) sewer system. Recommendation was made to proceed with low-pressure system and tie into existing gravity sewer at extents of project area.

# FAQ – Construction

---

## Question

- When will we learn more about the construction portion of the project?
  
  
  
  
  
  
  
  
  
  
- Will there be ledge removal?

## Answer

- The City will hold a public pre-construction meeting once a contractor has been selected. This meeting will cover schedule, progression of work, coordination, specific construction details and any additional questions.
  
  
  
  
  
  
  
  
  
  
- Ledge removal is anticipated and is part of the reason this type of sewer system is being designed. Once extent of ledge is determined, removal method (hammer, blasting, etc.) will be evaluated.

# FAQ – Construction

---

## Question

- When new sewers are being installed, will I still be able flush my toilet and shower?
  
  
  
  
  
  
  
  
  
  
- What is the process to connect to the new sewer service?

## Answer

- Yes, Contractor will be extending a sewer connection to the edge of the City right-of-way/edge of pavement and will not be connecting sewer service to individual residents. There should be no interruption to your existing septic service.
  
  
  
  
  
  
  
  
  
  
- You need to contact the City to request a new Sewer Service connection.

# FAQ – Pumping System

---

## Question

- What type of pumping system will I need to connect?

## Answer

- The sewer system sizing will be based on the EnvironmentOne type semi-positive displacement pumps. Visit <https://eone.com/sewer-systems/products> for information