



---

**Portsmouth Water System  
PFC Sampling  
- Sampling since May 2014  
Updated June 1, 2016**

---

The Air Force's consultant has been performing frequent routine sampling of the water supply wells in the system near the Haven Well. The Smith Well is sampled weekly for PFCs and the Harrison Well is sampled every two weeks. In addition to the water supply wells, the Air Force's consultant is sampling other monitoring wells in the surrounding area to track the aquifer and monitor for any PFCs moving toward the supply wells. They have also been monitoring water from the distribution system by sampling quarterly at the tap of two locations (currently the NHDES office and at Fire Station No. 3). To date, PFC levels have remained consistent and all detected levels of PFCs in the currently operating supply wells remain below the EPA's health standards. The water at the tap which is a blend water from the Pease wells and the Portsmouth Water System has also measured lower levels of PFC's than the well PFCs. Data is updated on the City's website once it has been validated by the laboratory and provided to the City by the Air Force's consultant.

All of the Portsmouth water sources were sampled for Perfluorinated compounds (PFCs) in May 2014 by the New Hampshire Department of Environmental Services. Samples were also taken in two locations of the City's water distribution system (one at the DPW on Peverly Hill Road and another at the meter pit in New Castle). All of the water sources have also been sampled as part of the USEPA's third Unregulated Contaminant Monitoring Rule (UCMR 3). Four rounds of UCMR sampling was performed between July 2014 and April 2015. Additionally, Madbury Well #5, which is adjacent to Madbury Wells 2, 3 and 4, was sampled in April 2016 as part of the pump testing of that well. To date, all sample results were below the level of detection for all PFCs except for one detection of PFOA at Madbury Well #5 that registered .002 parts per billion (ppb), or 2 parts per trillion (ppt).

The following table and map shows the PFC sample events and for the Portsmouth water system and the PFC sampling frequency and locations for the Pease water system.

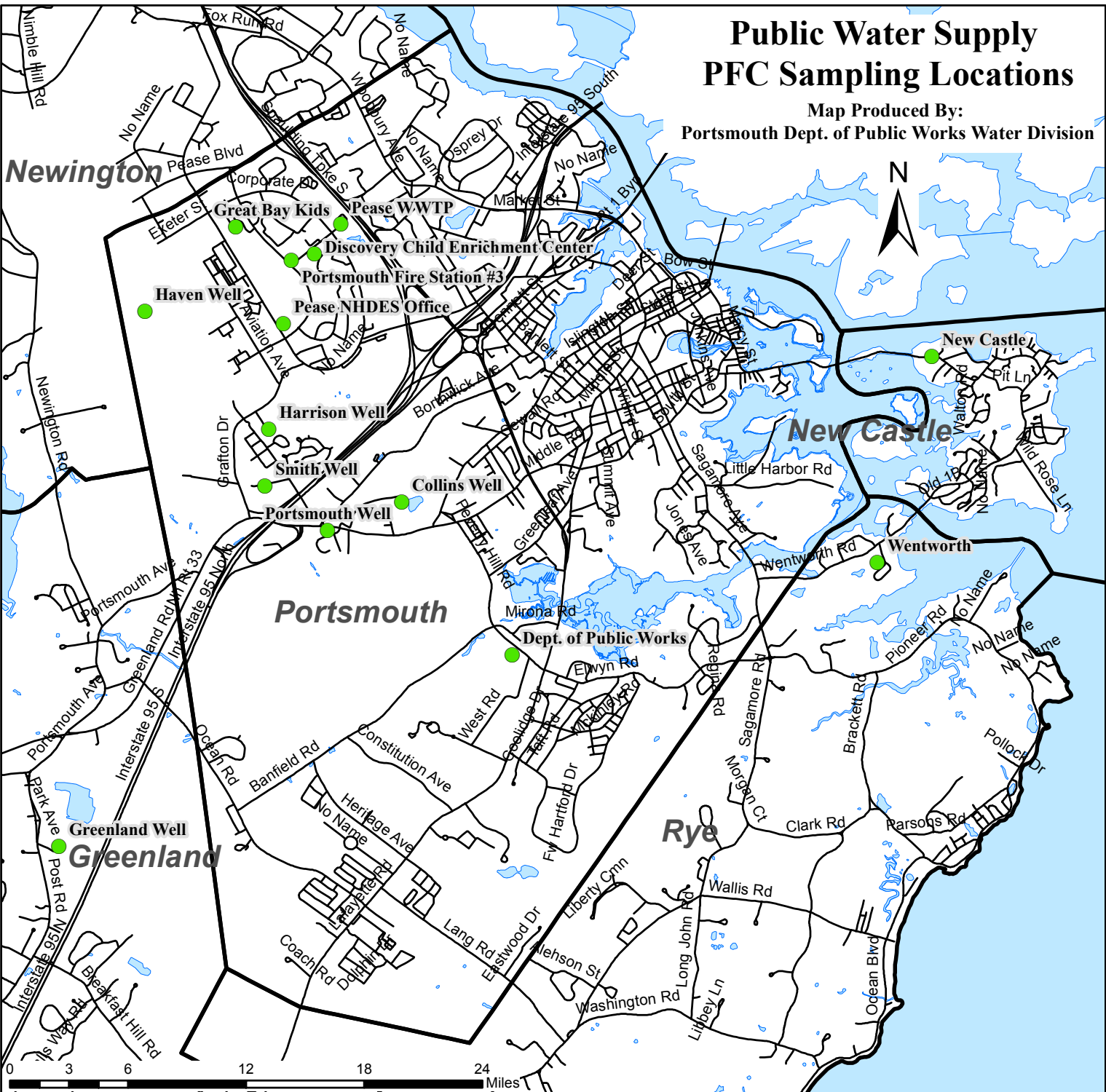
<b>Portsmouth Water System PFC Sample Summary</b>						
Sampler	NHDES	Portsmouth	Portsmouth	Portsmouth	Portsmouth	EGGI
Laboratory	ALS	PACE	PACE	PACE	PACE	Eurotins
Sample Location	NHDES 5/16/2014	UCMR 3 7/21/2014	UCMR 3 10/27/2014	UCMR 3 2/10/2015	UCMR 3 4/7/2015	Well 5 Pump Test 4/7/2016
Bellamy Reservoir	X					
Madbury Well 2	X	X		X		
Madbury Well 3	X	X	X	X		
Madbury Well 4	X	X				
Madbury Well 5						X
Madbury Treatment*		X	X	X	X	
Portsmouth Well	X	X		X		
Collins Well	X	X		X		
Greenland Well	X	X		X		
Public Works Dept.	X					
New Castle	X					
Haven Well	X					

\* Madbury Treatment is a blend of Water Treatment Facility & Madbury Wells.

<b>Pease Tradeport Water System PFC Sampling Schedule</b>					
Sampler: AMEC FW    Laboratory: Maxxam					
Sample Location	1x / Week	2x / Month	1x / Month	4x / Year	Other
Smith Well	X				
Harrison Well		X			
Portsmouth Well			X		
Collins Wells			X		
NHDES Office				X	
Fire Station #3				X	
Pease WWTP					X
Discovery Child Enrichment Center					X
Great Bay Kids					X

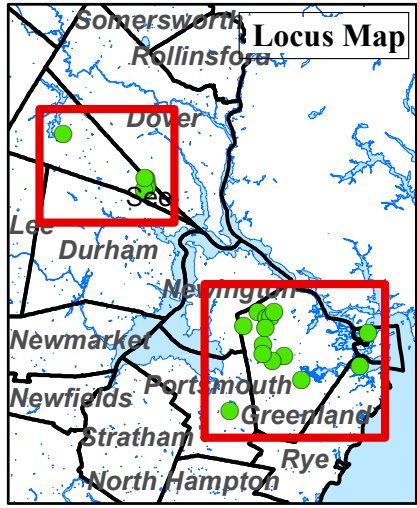
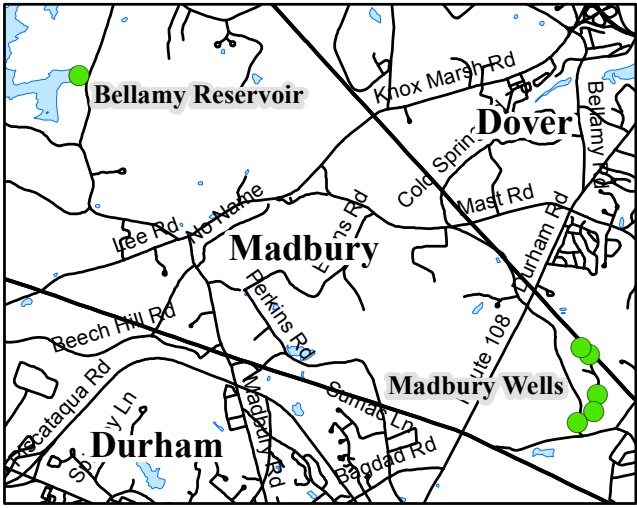
# Public Water Supply PFC Sampling Locations

Map Produced By:  
Portsmouth Dept. of Public Works Water Division



**Legend**

- PFC Sampling Locations\*
- DOT Roads
- ▭ Town Boundary
- Open Water



\*See associated sample summary tables for more information.

# Pease Tradeport Water System – PFC Sample Locations

