

How will the new Middle School project impact athletics?

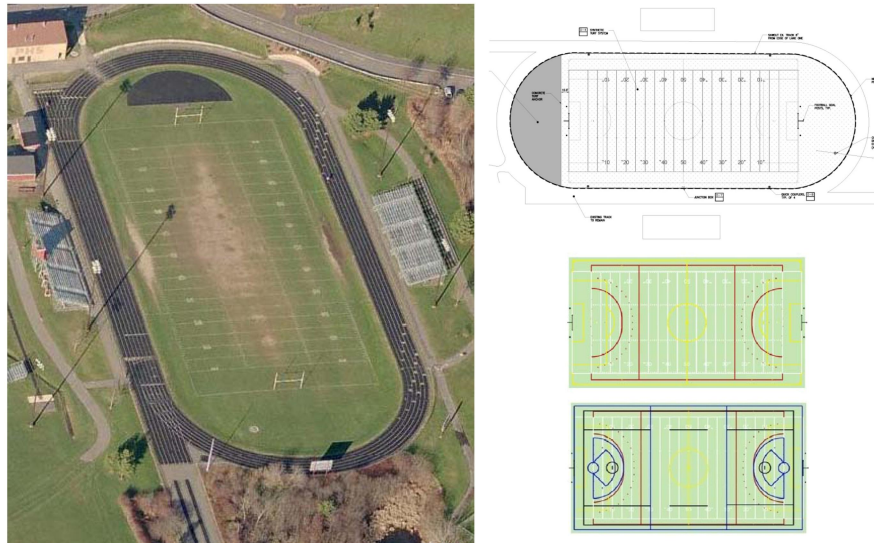
The Portsmouth Middle School Joint Building Committee is committed to ensuring the continuation of athletic opportunities for Portsmouth students and the public throughout the renovation and expansion of the Portsmouth Middle School and after its completion.

The new wing of the \$37.5 million project will require much of the Alumni Field area used for PMS physical education classes and competitive athletics, high school softball games and practices, and by three public softball leagues and Portsmouth Youth Football.

PMS physical education classes and team practices will continue on open land on the PMS campus or the City fields across Parrott Avenue. The NH Department of Education's waiver on minimum site size for the downtown project is contingent upon providing a regulation size field to support the competitive athletics program. The only field available for PMS lacrosse, soccer and field hockey games was the already overused Portsmouth High School football field so the State also granted a waiver allowing installation of artificial turf to accommodate the additional usage. The waivers were necessary to receive State building aid to help pay for the Middle School project.

High School Synthetic Turf Improvements

- Artificial turf to be installed to accommodate additional usage from Middle School lacrosse, soccer and girls' field hockey games scheduled after school, with high school games to follow
- The existing track surface will remain, with new athletic surfacing added inside the oval.
- The project includes 92,109 square feet of synthetic turf and 12,203 square feet of athletic paving.
- \$1.25 million project is scheduled for completion by September 2010.

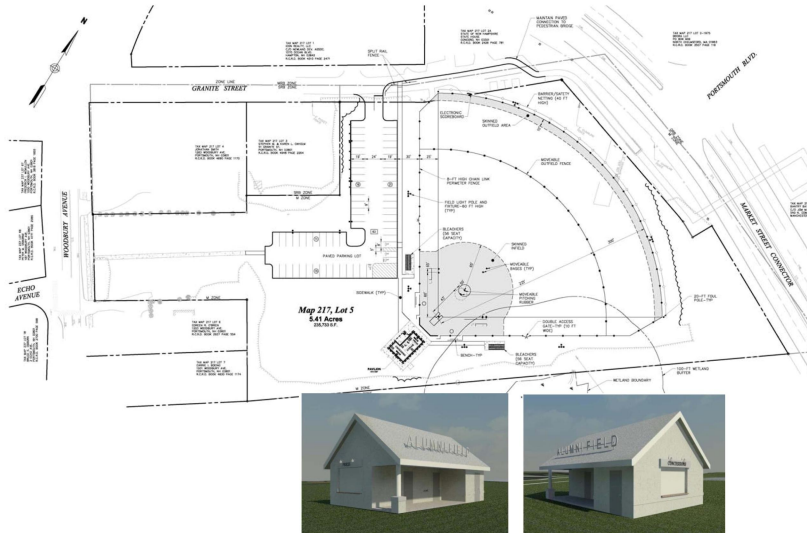


In addition, replacement of the softball field was a condition of lifting the deed restriction to allow Alumni Field to be used for the Middle School expansion. It was decided to construct a new softball field on City-owned land on Granite Street.

Connecting the past with the future...

New Softball Field at 25 Granite Street

- Alumni Field was used by over 750 players in the Portsmouth Youth Football, Portsmouth Co-Ed Softball, Portsmouth Women's Softball and Portsmouth Men's Softball Leagues.
- The outdated Wentworth School to be razed to make space for a softball field with bleachers, 63-space parking area, restroom/concession building, landscaping, drainage and lighting
- \$1.19 million project is scheduled for completion by October 2010.



Portsmouth Youth Recreation Facility

- The City Council in March 2010 authorized design work for a second gymnasium with associated office/storage site to possibly replace the outdated Connie Bean Recreation Center.
- The Council said completing design work would be less expensive now than later, but tabled a decision on whether to move forward on construction pending bid results.

Connecting the past with the future...