



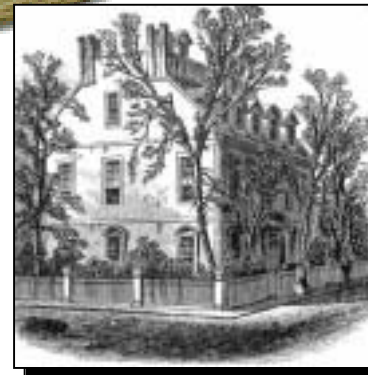
# Sherburne Study Circle

Linda Chase, Charles Doleac, Theresa Garabedian,  
Noelle Grattan, Janine Kniola, David Kniola, Jennifer  
Meister, Diane Stradling and Daniel Carchidi

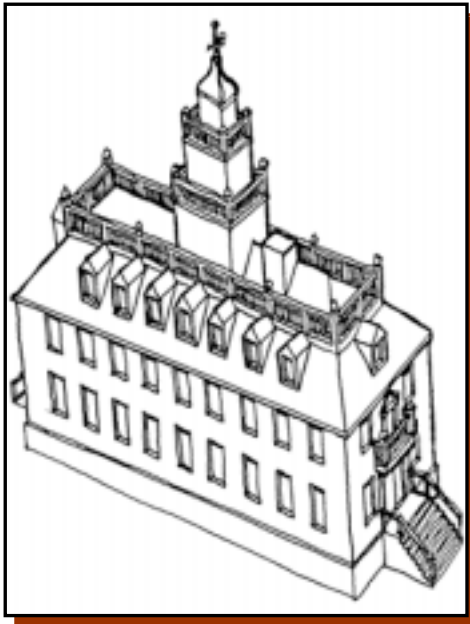


# Portsmouth, NH

A society of knowledgeable and engaged citizens, whose future draws unusual strength from its past while promoting understanding among its citizens...



# Return the Old State House to Portsmouth



- Living symbol of Portsmouth's past
- Design for multi-functional use
  - Educational
  - Cultural Center
- Focal point for the city's historical organizations
- Use our rich history to consciously shape city's character

# Portsmouth, NH



A home for  
innovation and  
creativity in all its  
forms...

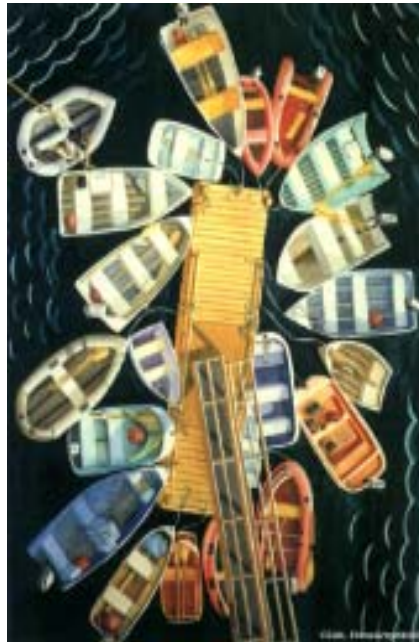




# Develop Under Utilized Town Assets



- Change City regulations to support use of local buildings for artists and local businesses
- Make available:
  - Lafayette School
  - JFK Building (Post office)
  - Frank Jones Mill Buildings



# Portsmouth, NH

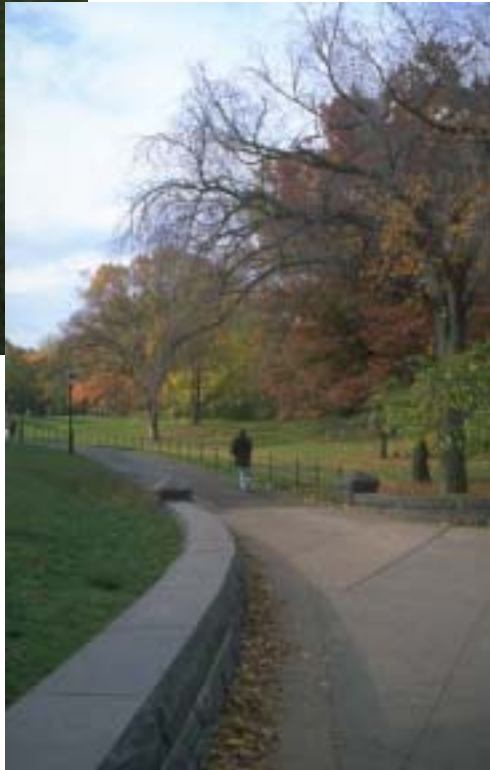
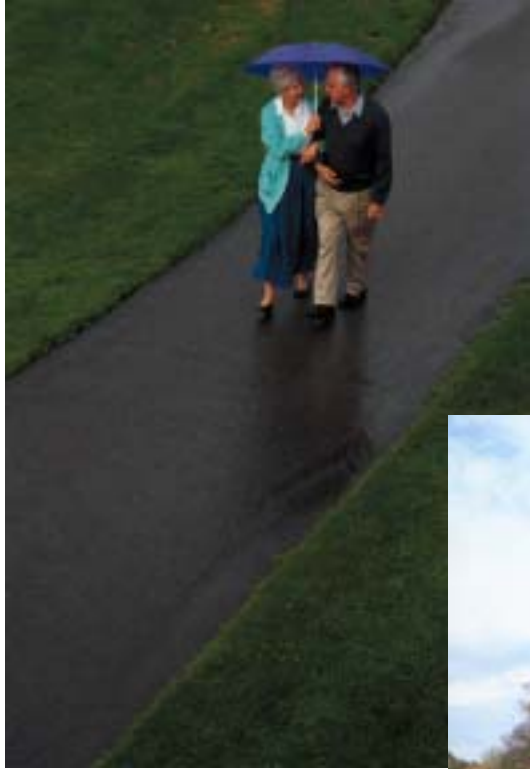


Connect and  
Beautify  
Neighborhoods





# Connect Neighborhoods...Plant Trees



- Connect City with biking and walking paths
  - Patriot Park
  - Beechstone
  - Ceders
  - Spinnaker Point
  - Atlantic Heights
- Plant trees throughout City – particularly on Market Street Extension