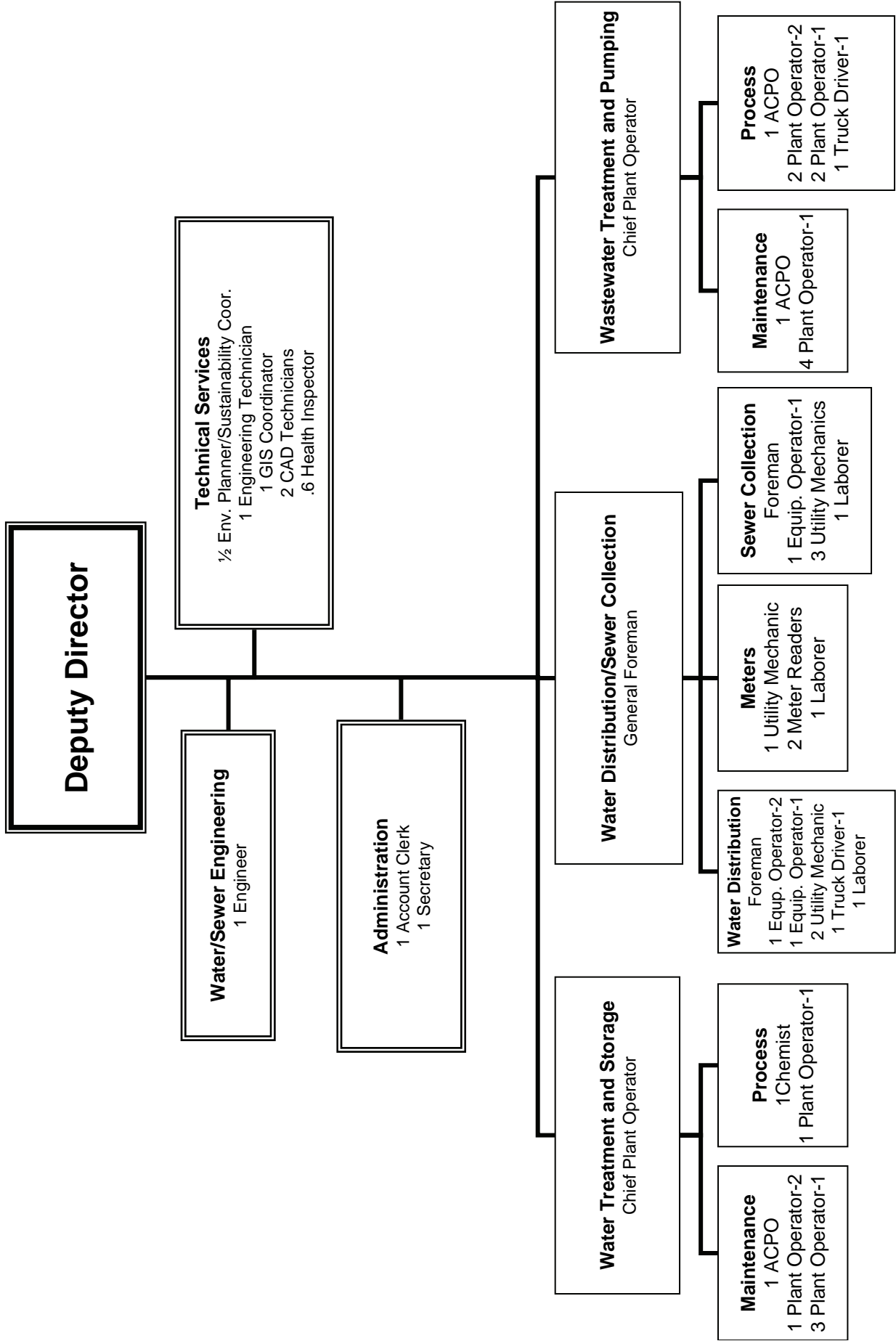


# Water and Sewer Divisions



POSITION SUMMARY SCHEDULE

| <b>Enterprise Funds-Water and Sewer</b> |                 |                 |                 |
|---|-----------------|-----------------|-----------------|
| <b>Positions- Full Time</b>             | <b>FY 08-09</b> | <b>FY 09-10</b> | <b>FY 10-11</b> |
| Deputy PW Director                      | 1               | 1               | 1               |
| Engineer                                | 1               | 1               | 1               |
| Envir. Planner/Sustainability Coord.    | 0.5             | 0.5             | 0.5             |
| Engineering Technician                  | 1               | 1               | 1               |
| Health Inspector                        | 0.6             | 0.6             | 0.6             |
| GIS Coordinator                         | 1               | 1               | 1               |
| CAD Technician                          | 2               | 2               | 2               |
| General Foreman                         | 1               | 1               | 1               |
| Chief Plant Operator                    | 2               | 2               | 2               |
| Asst Chief Plant Operator               | 3               | 3               | 3               |
| Water Foreman                           | 1               | 1               | 1               |
| Sewer Foreman                           | 1               | 1               | 1               |
| Chemist                                 | 1               | 1               | 1               |
| Laboratory Technician                   | 1               | 1               | 0               |
| Plant Operator 2                        | 3               | 3               | 3               |
| Plant Operator 1                        | 10              | 10              | 10              |
| Equipment Operator II                   | 1               | 1               | 1               |
| Equipment Operator I                    | 2               | 2               | 2               |
| Utility Mechanic                        | 6               | 6               | 6               |
| Meter Reader                            | 2               | 2               | 2               |
| Truck Driver 1                          | 2               | 2               | 2               |
| Laborer                                 | 3               | 3               | 3               |
| Account Clerk                           | 1               | 1               | 1               |
| Secretary                               | 1               | 1               | 1               |
| <b>Total</b>                            | <b>48.1</b>     | <b>48.1</b>     | <b>47.1</b>     |
| <b>Positions- Part Time</b>             | <b>FY 08-09</b> | <b>FY 09-10</b> | <b>FY 10-11</b> |
| Laborer                                 | 2               | 2               | 2               |
| Meter Repair Technician                 | 0               | 0               | 0               |
| <b>Total</b>                            | <b>2</b>        | <b>2</b>        | <b>2</b>        |



# WATER DIVISION

## MISSION:

The Portsmouth Water Division strives to provide quality drinking water and an adequate supply of water for fire protection. Through professionalism, expertise, and efficient work practices, the division seeks to maintain and develop a sound infrastructure using the latest available cost effective treatment technology and production, storage, and distribution methods. The division is committed to high environmental standards and controls through respect for natural resources and adaptation to the built environment.

## BUDGET COMMENTS-DEPARTMENT REQUEST:

The FY11 proposed budget of \$6,530,448 represents an increase of \$154,385 or 2.4%. The increase is primarily due the new water treatment plant currently under construction. The operating and maintenance portion of the budget reflects a decrease of 0.48% from \$4,276,131 in FY10 to \$4,255,467 in FY11.

The savings in the operations portion of the budget were realized through the elimination of a position shared with the Sewer division as well as some savings that will occur relating to the disposal of the residuals at the new treatment plant.

In FY11, the City will have completed the Automated Meter Reading system project that will allow all customers to be billed on a monthly basis. With the new system fully functional, the water division will begin looking at features in the program to detect increased usage, and thus potential leaks in a customer's system.

The Madbury Water Treatment plant construction will continue in the budget year with start-up of the new facility beginning in the 4<sup>th</sup> quarter of FY11. The new Dissolved Air Flotation (DAF) plant combined with improvements at the Bellamy Reservoir will increase the treatment level of the systems' largest water source. The design and construction of the new plant is utilizing LEED sustainable principles to meet future drinking water regulations.

## BUDGET SUMMARY OF EXPENDITURES:

| WATER DEPARTMENT                  | FY09<br>BUDGET   | FY09<br>ACTUAL   | FY10<br>BUDGET   | FY11<br>DEPARTMENT<br>REQUEST | FY11<br>CITY MANAGER<br>RECOMMENDED |
|-----------------------------------|------------------|------------------|------------------|-------------------------------|-------------------------------------|
| SALARIES                          | 1,162,985        | 1,099,201        | 1,134,766        | 1,093,937                     | 1,093,937                           |
| PART-TIME SALARIES                | 14,518           | 11,274           | 14,518           | 14,518                        | 14,518                              |
| OVERTIME                          | 100,000          | 90,667           | 100,000          | 99,497                        | 99,497                              |
| HEALTH INSURANCE                  | 365,500          | 329,409          | 403,183          | 385,989                       | 385,989                             |
| DENTAL INSURANCE                  | 23,500           | 21,124           | 24,137           | 22,087                        | 22,087                              |
| LEAVE AT TERMINATION              | 30,600           | 9,149            | 30,600           | 20,000                        | 20,000                              |
| WORKERS' COMPENSATION             | 27,333           | 27,333           | 21,969           | 18,954                        | 18,954                              |
| OTHER FRINGE BENEFITS             | 213,922          | 247,320          | 257,771          | 246,807                       | 246,807                             |
| COLLECTIVE BARGAINING CONTINGENCY | 54,180           | -                | 76,866           | 80,051                        | 80,051                              |
| <i>Contractual Obligations</i>    | 1,992,538        | 1,835,476        | 2,063,810        | 1,981,840                     | 1,981,840                           |
| CHEMICALS                         | 290,000          | 299,427          | 318,600          | 318,600                       | 318,600                             |
| REPAIRS TO EQUIP/BLDGS            | 183,460          | 149,534          | 178,460          | 173,460                       | 173,460                             |
| UTILITIES                         | 499,230          | 382,941          | 474,230          | 464,230                       | 464,230                             |
| ADMINISTRATIVE OVERHEAD           | 463,691          | 463,691          | 470,604          | 470,604                       | 470,604                             |
| SLUDGE/GRIT REMOVAL               | 75,000           | 100,871          | 50,000           | 50,000                        | 50,000                              |
| PROF CONTRACTED SERVICES          | 308,652          | 96,672           | 255,402          | 260,402                       | 260,402                             |
| INTEREST/FEES ON DEBT/TAXES       | 695,124          | 410,379          | 1,181,488        | 1,315,378                     | 1,315,378                           |
| DEPRECIATION                      | 675,753          | 666,409          | 751,944          | 815,094                       | 815,094                             |
| EQUIPMENT                         | 166,500          | 61,275           | 166,500          | 144,500                       | 144,500                             |
| OTHER OPERATING                   | 463,601          | 322,857          | 465,025          | 536,340                       | 536,340                             |
| <i>Other Operating</i>            | 3,821,011        | 2,954,056        | 4,312,253        | 4,548,608                     | 4,548,608                           |
| <b>TOTAL</b>                      | <b>5,813,549</b> | <b>4,789,533</b> | <b>6,376,063</b> | <b>6,530,448</b>              | <b>6,530,448</b>                    |

## WATER RATE

The current City water rate structure is a two tiered inclining rate structure. The proposed first 10 units (a unit is 100 cubic feet of water or 748 gallons) of water per month will be billed at a rate of \$4.15 per unit up from \$3.30 per unit in FY10. Any consumption above 10 units is billed at \$5.00 per unit which is up from \$3.90 in FY10. This method of billing provides an equitable method of financing of water operations. The large volume users have a greater impact on system production capacities, storage volume and pipe sizing.

As mentioned above, the operation and maintenance portion of the budget for FY11 has a slight decrease from FY10 levels. The rate increase is required to fund capital projects, most significantly the new water treatment plant, as well as water line replacements and well upgrades.

**One unit of water equals 100 cubic feet or 748 gallons.**

|  | Current<br>FY10 Rate<br>(per unit) | Proposed<br>FY11 Rate<br>(per unit) |
|--|------------------------------------|-------------------------------------|
| First 10 Units of Water Consumption<br>per month | \$3.30                             | \$4.15                              |
| Over 10 Units of Water Consumption<br>per month  | \$3.90                             | \$5.00                              |
| All Irrigation Meter Consumption                 | \$3.90                             | \$5.00                              |

**80% of all the residential customer usage is billed at the 10 units or less tier.**

The proposed water rate will raise the average residential customer's water bill by approximately \$8.50 per month as depicted in the table below.

| FY11 Water Rate<br>Average Residential Customer (Monthly)<br>Based on 250 gallons per day usage |               |                |        |
|---|---------------|----------------|--------|
|   | Current Rates | Proposed Rates | Change |
| Monthly Consumption in units<br>(1 unit = 100 cf = 748 gallons)                                 | 10            | 10             |        |
| First Tier User Rate  | \$3.30        | \$4.15         | \$0.85 |
| Water User Charge   | \$33.00       | \$41.50        | \$8.50 |
| Monthly Water Usage Billing   | \$33.00       | \$41.50        | \$8.50 |

The minimum charge rate for FY11 will remain the same and is based on service meter size as indicated in the table below.

| Minimum Water Charge |              |
|----------------------|--------------|
| Meter Size           | Monthly Rate |
| 5/8"                 | \$4.95       |
| 3/4"                 | \$4.95       |
| 1"                   | \$8.27       |
| 1 1/2"               | \$14.25      |
| 2"                   | \$22.91      |
| 3"                   | \$36.26      |
| 4"                   | \$68.74      |
| 6"                   | \$120.27     |
| 8"                   | \$168.01     |
| 10"                  | \$252.02     |

## BUDGET SUMMARY-WATER DIVISION

The Water Division prepares its budget using an accrual basis of accounting represented in the first table "Budget Resolution" The cash requirements/rate model table represents the cash requirements for the FY11 and used to calculate the user rate.

### *Budget Resolution (Accrual Basis of Accounting)*

| Budget for Resolution              | FY09 Budget      | FY09 Actual      | FY10 Budget      | Proposed FY11 Budget |
|------------------------------------|------------------|------------------|------------------|----------------------|
| Operations and Maintenance         | 4,276,172        | 3,651,469        | 4,276,131        | 4,255,476            |
| Depreciation                       | 675,753          | 666,409          | 751,944          | 815,094              |
| Interest/Fees on Debt/Taxes        | 695,124          | 410,379          | 1,181,488        | 1,315,378            |
| Equipment and Minor Capital Outlay | 166,500          | 61,275           | 166,500          | 144,500              |
| <b>Budget Resolution</b>           | <b>5,813,549</b> | <b>4,789,533</b> | <b>6,376,063</b> | <b>6,530,448</b>     |

### *Cash Requirements/Rate Model*

| Adjustment from Budget to Cash Requirements |                  |                  |                  |                  |
|---|------------------|------------------|------------------|------------------|
|   | FY09             | FY09 Actual      | FY10             | Proposed FY11    |
| <b>Budget Resolution</b>                    | <b>5,813,549</b> | <b>4,789,533</b> | <b>6,376,063</b> | <b>6,530,448</b> |
| Capital Projects, Vehicle Replacement       | 1,314,000        | 1,136,528        | 2,320,000        | 2,755,000        |
| Inventory                                   | 150,000          | 13,543           | 100,000          | 100,000          |
| Principal Debt                              | 532,528          | 427,528          | 482,528          | 1,327,528        |
| less: Accrued Interest                      | 0                | (122,959)        | (375,653)        | (188,850)        |
| less: Depreciation                          | (675,753)        | (666,409)        | (751,944)        | (815,094)        |
| less: Stock Materials                       | (43,000)         | (43,000)         | (43,000)         | (43,000)         |
| less: OPEB Liability                        | 0                | (21,976)         | 0                | (21,976)         |
| <b>Cash Requirements</b>                    | <b>7,091,324</b> | <b>5,512,787</b> | <b>8,107,994</b> | <b>9,644,056</b> |

| Estimated Revenues for Cash Requirements   |                  |                  |                  |                  |
|--|------------------|------------------|------------------|------------------|
|  | FY09             | FY09 Actual      | FY10             | Proposed FY11    |
| NON-User Fees                              |                  |                  |                  |                  |
| Fees                                       | 724,500          | 536,208          | 613,000          | 622,500          |
| Special Agreements                         | 135,115          | 135,115          | 135,115          | 135,115          |
| Minimum Charges                            | 699,510          | 692,455          | 695,830          | 695,830          |
| Other Financing Sources                    | 823,128          | 0                | 421,318          | 275,746          |
| Subtotal                                   | 2,382,253        | 1,363,778        | 1,865,263        | 1,729,191        |
| <b>To be Raised by User Rates</b>          | <b>4,709,071</b> | <b>4,149,009</b> | <b>6,242,731</b> | <b>7,914,865</b> |
| <b>Total Revenue for Cash Requirements</b> | <b>7,091,324</b> | <b>5,512,787</b> | <b>8,107,994</b> | <b>9,644,056</b> |

### *User Rate Revenues*

| Anticipated Billable Units:<br>(1 unit equals 748 gallons) | Proposed Rates | Units     | \$               |
|--|----------------|-----------|------------------|
| Billable Units at  | \$4.15         | 666,265   |                  |
| Anticipated Revenue  |                |           | 2,765,000        |
| Billable Units at  | \$5.00         | 1,020,863 |                  |
| Anticipated Revenue  |                |           | 5,104,315        |
| Other Utilities  |                |           | 45,550           |
| <b>Total Anticipated User Revenues:</b>                    |                |           | <b>7,914,865</b> |

**CAPITAL PROJECTS:**

The following two tables represent capital projects and Rolling Stock equipment identified in Capital Improvement Plan, Appendix II and Rolling Stock Appendix I.

The items in the capital outlay table are funded through water revenues.

| <b>Capital Outlay</b>   |                      |
|---|----------------------|
| <b><u>Project Name</u></b>  | <b><u>Amount</u></b> |
| Annual Water Line Replacement   | 2,100,000            |
| Maplewood Ave Waterline Replacement                                   | 300,000              |
| Hobbs Hill Landing Water Tank Replacement                             | 50,000               |
| Well Stations Improvement   | 100,000              |
| Equipment, W-35 Dump Truck, W-60 Loader/Backhoe; Rolling Stock Append | 205,000              |
| <b>TOTAL</b>  | <b>2,755,000</b>     |

The following project is anticipated to be funded through the State Revolving Loan Fund (SRF) through the State of New Hampshire. The State of New Hampshire offers loans to municipalities for approved Department of Environmental Service projects. If this project does not receive funding from the SRF program, the Division will seek other financing sources to complete this project.

| <b>Anticipated Revolving Loan Fund/Other Financing Sources Projects</b> |                      |
|---|----------------------|
| <b><u>Project Name</u></b>  | <b><u>Amount</u></b> |
| Water Source Augmentation   | 1,000,000            |
| <b>TOTAL</b>  | <b>1,000,000</b>     |

**GOALS AND OBJECTIVES:**

*Goal:* Continue operations based on conjunctive approach to water management.

*Objective:*

- Develop cost component to conjunctive management model
- Continue conservation program through Rain Barrel distribution and leak detection program
- Provide training and operational direction to staff.
- Develop new standard operating procedures.

*Goal:* Continue steps to improve water quality, water quantity and system security.

*Objective:*

- Continue construction and startup of Water Treatment Plant; pursue capital projects including continuation of annual water line replacement, water source augmentation.
- Continue upgrade of SCADA system water supply and security applications.
- Protect reservoir watershed areas and wellhead zones of contribution through land acquisition, regulation, and other available means as appropriate.
- Promote water conservation and increase public awareness of best practices in watershed management near the Bellamy Reservoir.
- Formalize a comprehensive leak detection program

## PROGRAMS AND SERVICES:

**Water Production-** Provide water production for two pressure zones supplying Portsmouth, Newington, Greenland, New Castle and portions of Rye, Madbury, Durham, and Pease International Tradeport.

- Operate and maintain Bellamy Reservoir (surface water supply)
- Operate and maintain 6 wells in Portsmouth pressure zone and 3 wells on Pease International Tradeport pressure zone (groundwater supply)
- Operate and maintain Madbury Water Treatment Plant

**Water Storage-** Provide water storage capacity reaching 10,600,000 gallons of water.

- Operate and maintain 5 storage tanks in two pressure zones

**Water Distribution-** Provide water distribution to service Portsmouth, Newington, Greenland, New Castle and portions of Rye, Madbury, Durham, and Pease International Tradeport.

- Provide drinking water supply
- Provide water for fire protection
- Operate and maintain 166 miles of pipe from 2” to 24” in Portsmouth Pressure Zone
- Operate and maintain 23 miles of pipe from 4” to 12” in Pease Pressure Zone
- Maintain 7,800 services from main in street to curb shutoff, installs new services
- Maintain and install hydrants (including biannual flushing program)
- Maintain and install city side water services
- Maintain, install, and read water meters
- Maintain and exercise valves
- Perform backflow testing
- Produce annual quality report (Consumer Confidence Report CCR)

**Technical Services-** Provide technical services to water division

- Maintain and further develop geographic mapping and information system
- Prepare maps and plans for information analysis and presentation
- Prepare technical specifications, drawings, and estimates
- Review projects in design phase and perform field survey work
- Perform engineering inspections for water construction projects
- Administer and operate the backflow and well head protection programs

## PERFORMANCE MEASURES:

|  | <u>FY 08</u> | <u>FY 09</u> | <u>Estimated<br/>FY10</u> | <u>Estimated<br/>FY11</u> |
|--|--------------|--------------|---------------------------|---------------------------|
| Percent of unaccounted for water   | 24%          | 19%          | 17%                       | 14%                       |
| Number of watermain breaks   | 38           | 28           | 40                        | 30                        |
| Operating costs for treatment of drinking water per million gallons (Chemical costs) | \$140        | \$172        | \$189                     | \$208                     |
| Kilowatt hours per million gallons   | 1,261        | 1,340        | 1,370                     | 1,350                     |

| Grade                                  | Job Description   | Name                          | Department Request FY11 | Salary Allocated to Water |
|--|---|-------------------------------|-------------------------|---------------------------|
| <b>Water Division</b>                  |   |                               |                         |                           |
| <u>Administration</u>                  |   |                               |                         |                           |
| PMA Grade 24 E                         | Deputy PW Director  | Allen, David                  | 96,537                  | 48,268                    |
| 1386 Grade 3 F                         | Acct Clerk  | Henderson, Patti              | 33,872                  | 33,872                    |
| <b>TOTAL</b>                           |   |                               | <b>130,409</b>          | <b>82,140</b>             |
| <u>Engineering</u>                     |   |                               |                         |                           |
| PMA Grade 21 E                         | Engineer  | Rice, Peter                   | 83,456                  | 41,728                    |
| PMA Grade 15 E                         | GIS Coordinator<br>*Environmental<br>Planner/Sustainability | McCarty, James                | 62,401                  | 31,201                    |
| PMA Grade 15 E                         | Coordinator   | Britz, Peter                  | 31,200                  | 15,600                    |
| 1386 Grade 13 10B/2C                   | Eng Tech  | Sheehan, Jared                | 46,582                  | 23,291                    |
| 1386 Grade 8 G                         | CAD Tech  | Siegel, James                 | 44,289                  | 22,144                    |
| 1386 Grade 8 F                         | CAD Tech  | Cote, Svetlana                | 43,104                  | 21,552                    |
| <b>TOTAL</b>                           |   |                               | <b>311,032</b>          | <b>155,516</b>            |
| <u>Supply and Treatment</u>            |   |                               |                         |                           |
| PMA Grade 18 E                         | CPO   | Scotton, Steve                | 72,160                  | 72,160                    |
| SMA Grade 12 E                         | ACPO  | Young, Mark                   | 54,226                  | 54,226                    |
| 1386 Grade 11 G                        | Chemist   | Armstrong, Peter              | 51,195                  | 51,195                    |
| 1386 Grade 10 G                        | Plant Oper 2  | Whitmyer, Melvin              | 48,775                  | 48,775                    |
| 1386 Grade 8 G                         | Plant Oper 1  | Foote, Brian                  | 44,295                  | 44,295                    |
| 1386 Grade 8 G                         | Plant Oper 1  | Lippmeier, David              | 44,295                  | 44,295                    |
| 1386 Grade 8 G                         | Plant Oper 1  | Balcomb, Alan                 | 44,295                  | 44,295                    |
| 1386 Grade 8 G                         | Plant Oper 1  | Bartlett, Arthur              | 44,295                  | 44,295                    |
| 1386 Grade 9 G                         | Lab Tech  | Proposed Position Elimination | 0                       | 0                         |
| <b>TOTAL</b>                           |   |                               | <b>403,536</b>          | <b>403,536</b>            |
| <u>Distribution</u>                    |   |                               |                         |                           |
| SMA Grade 15 F                         | Gen Foreman   | Jenkins, Michael              | 64,438                  | 32,219                    |
| SMA Grade 13 F                         | Water Foreman   | McGlynn, Scott                | 58,478                  | 58,478                    |
| 1386 Grade 9 E                         | Equip Oper 2  | Linchey, Kevin                | 44,016                  | 44,016                    |
| 1386 Grade 8 E                         | Equip Oper 1  | Shea, Brian                   | 41,956                  | 41,956                    |
| 1386 Grade 7 G                         | Utility Mech  | Mahan, Robert                 | 42,201                  | 42,201                    |
| 1386 Grade 7 F                         | Utility Mech  | Shaw, Mark                    | 41,072                  | 41,072                    |
| 1386 Grade 7 D                         | Utility Mech  | Beevers, Jason                | 39,972                  | 39,972                    |
| 1386 Grade 6 E                         | Truck Driver 1  | Brown, Jonathon               | 38,099                  | 38,099                    |
| 1386 Grade 6 F                         | W/S Meter Reader  | Kecy, Daniel                  | 39,146                  | 19,573                    |
| 1386 Grade 6 1E/11F                    | W/S Meter Reader  | Desfosses, Lori               | 39,058                  | 19,529                    |
| 1386 Grade 5 G                         | Laborer   | Ronchi, Peter                 | 38,330                  | 38,330                    |
| 1386 Grade 5 E                         | Laborer   | Meade, Bradford               | 36,306                  | 36,306                    |
| <b>TOTAL</b>                           |   |                               | <b>523,072</b>          | <b>451,751</b>            |
| <b>TOTAL FULL TIME</b>                 |   |                               | <b>1,368,049</b>        | <b>1,092,943</b>          |
| Laborer                                |   | Summer Laborer                | 5,742                   | 5,742                     |
| Eng Tech                               |   | Vacant                        | 8,776                   | 8,776                     |
| <b>TOTAL PART TIME</b>                 |   |                               | <b>14,518</b>           | <b>14,518</b>             |
| <b>EDUCATION STIPEND</b>               |   |                               | <b>1,988</b>            | <b>994</b>                |
| <b>TOTAL WATER DEPARTMENT SALARIES</b> |   |                               | <b>1,384,555</b>        | <b>1,108,455</b>          |

\*25% FUNDED BY WATER, 25% FUNDED BY SEWER, 20% FUNDED BY THE COAKLEY LANDFILL TRUST AND 30% FUNDED BY THE GENERAL FUND.

|                                     |                           | FY09             | FY09             | FY10             | FY11             | FY11             |
|-------------------------------------|---------------------------|------------------|------------------|------------------|------------------|------------------|
|                                     |                           | BUDGET           | ACTUAL           | BUDGET           | DEPARTMENT       | CITY MANAGER     |
|                                     |                           |                  |                  |                  | REQUEST          | RECOMMENDED      |
| <b>WATER DEPARTMENT</b>             |                           |                  |                  |                  |                  |                  |
| <b>ADMINISTRATION PORTSMOUTH</b>    |                           |                  |                  |                  |                  |                  |
| <b>50-751-610-51-100-492</b>        |                           |                  |                  |                  |                  |                  |
| 011001                              | REGULAR SALARIES          | 66,709           | 159,700          | 68,606           | 69,819           | 69,819           |
| 011061                              | INSURANCE REIMBURSEMENT   | -                | -                | -                | -                | -                |
| 011064                              | COLL BARG CONTINGENCY     | 54,180           | -                | 41,976           | 54,180           | 54,180           |
| 011065                              | COLL BARG CONTINGENCY     | -                | -                | 34,890           | 25,871           | 25,871           |
| 014041                              | OVERTIME                  | 172              | 127              | 172              | 1,585            | 1,585            |
| 015001                              | LONGEVITY                 | 8,745            | 9,586            | 7,530            | 7,688            | 7,688            |
| 016001                              | LEAVE AT TERMINATION      | 30,000           | 9,149            | 30,000           | 17,000           | 17,000           |
| 021001                              | INSURANCE-HEALTH          | 310,675          | 329,409          | 342,706          | 328,091          | 328,091          |
| 021101                              | INSURANCE-DENTAL          | 19,975           | 21,124           | 20,516           | 18,774           | 18,774           |
| 021501                              | INSURANCE-LIFE            | 3,187            | 2,814            | 3,187            | 1,658            | 1,658            |
| 021601                              | INSURANCE-DISABILITY      | 9,090            | 9,277            | 9,090            | 6,715            | 6,715            |
| 021802                              | OPEB LIABILITY            | -                | 21,976           | -                | 21,976           | 21,976           |
| 022001                              | SOCIAL SECURITY           | 4,174            | 9,490            | 4,270            | 4,930            | 4,930            |
| 022501                              | MEDICARE                  | 976              | 2,220            | 999              | 1,153            | 1,153            |
| 023001                              | RETIREMENT                | 5,884            | 14,339           | 6,260            | 7,284            | 7,284            |
| 026002                              | INSURANCE-WORKERS COMP    | 23,233           | 23,233           | 18,673           | 16,111           | 16,111           |
| 030101                              | PROF SERVICES-AUDIT       | 8,000            | 8,000            | 8,000            | 8,000            | 8,000            |
| 031002                              | PROF SERVICES-ENGINEERING | 5,000            | -                | 5,000            | 5,000            | 5,000            |
| 032001                              | PROF SERVICES-O/S COUNSEL | 30,000           | 7,785            | 30,000           | 20,000           | 20,000           |
| 033002                              | ADMINISTRATIVE OVERHEAD   | 394,137          | 394,137          | 400,014          | 400,014          | 400,014          |
| 033003                              | OVERHEAD APPLIED          | (71,028)         | -                | (71,028)         | -                | -                |
| 034001                              | LOCK BOXES                | 30,000           | 16,314           | 30,000           | 24,000           | 24,000           |
| 034103                              | TELEPHONE                 | 800              | 462              | 800              | 800              | 800              |
| 035004                              | OCCUPATIONAL HEALTH       | -                | 401              | 750              | 750              | 750              |
| 039054                              | PROF/SERVICES-CONTRACT    | 15,000           | 9,553            | 15,000           | 15,000           | 15,000           |
| 043024                              | REPAIRS-VEHICLE           | 500              | 1,000            | 500              | 500              | 500              |
| 043026                              | REPAIRS-COMPUTER EQUIP    | 500              | 260              | 500              | 500              | 500              |
| 043027                              | REPAIRS-OFFICE EQUIPMENT  | 700              | -                | 700              | 700              | 700              |
| 043028                              | MAINTENANCE               | 14,025           | -                | 14,025           | 25,000           | 25,000           |
| 048002                              | PROPERTY INSURANCE        | 24,208           | 24,208           | 25,418           | 42,684           | 42,684           |
| 053001                              | ADVERTISING               | 3,000            | 2,131            | 3,000            | 3,000            | 3,000            |
| 054050                              | TRAINING-EDUCATION        | 1,000            | -                | 1,000            | 1,000            | 1,000            |
| 055050                              | PRINTING                  | 10,000           | 10,325           | 10,000           | 10,000           | 10,000           |
| 056001                              | DUES PROFESSIONAL ORGANIZ | 500              | -                | 500              | 500              | 500              |
| 057101                              | TRAVEL AND CONFERENCE     | 300              | 129              | 300              | 300              | 300              |
| 061001                              | FIRST AID                 | -                | -                | -                | -                | -                |
| 062001                              | OFFICE SUPPLIES           | 3,000            | 853              | 3,000            | 3,000            | 3,000            |
| 062501                              | POSTAGE                   | 10,000           | 1,297            | 10,000           | 10,000           | 10,000           |
| 063501                              | GASOLINE                  | 35,000           | 53,512           | 42,000           | 42,000           | 42,000           |
| 067001                              | BOOKS & PERIODICALS       | -                | -                | -                | -                | -                |
| 074000                              | MACHINERY AND EQUIPMENT   | 5,000            | 1,902            | 5,000            | 5,000            | 5,000            |
| 081005                              | TAXES                     | 78,000           | 83,708           | 78,000           | 158,000          | 158,000          |
| 086001                              | DEPRECIATION              | 125,435          | 125,435          | 151,700          | 151,438          | 151,438          |
|                                     |                           | <b>1,260,077</b> | <b>1,353,857</b> | <b>1,353,054</b> | <b>1,510,021</b> | <b>1,510,021</b> |
| <b>ADMINISTRATION PEASE</b>         |                           |                  |                  |                  |                  |                  |
| <b>50-751-610-51-500-492</b>        |                           |                  |                  |                  |                  |                  |
| 011001                              | REGULAR SALARIES          | 11,772           | -                | 11,772           | 12,320           | 12,320           |
| 011064                              | COLL BARG CONTINGENCY     | -                | -                | -                | -                | -                |
| 014041                              | OVERTIME                  | 30               | -                | 30               | 280              | 280              |
| 015001                              | LONGEVITY                 | 1,543            | -                | 1,326            | 1,357            | 1,357            |
| 016001                              | LEAVE AT TERMINATION      | 600              | -                | 600              | 3,000            | 3,000            |
| 021001                              | INSURANCE-HEALTH          | 54,825           | -                | 60,477           | 57,898           | 57,898           |
| 021101                              | INSURANCE-DENTAL          | 3,525            | -                | 3,621            | 3,313            | 3,313            |
| 021501                              | INSURANCE-LIFE            | 562              | -                | 562              | 292              | 292              |
| 021601                              | INSURANCE-DISABILITY      | 1,604            | -                | 1,604            | 1,185            | 1,185            |
| 022001                              | SOCIAL SECURITY           | 737              | -                | 737              | 870              | 870              |
| 022501                              | MEDICARE                  | 172              | -                | 172              | 203              | 203              |
| 023001                              | RETIREMENT                | 1,038            | -                | 1,082            | 1,285            | 1,285            |
| 026002                              | INSURANCE-WORKERS COMP    | 4,100            | 4,100            | 3,296            | 2,843            | 2,843            |
| 030101                              | PROF SERVICES-AUDIT       | 152              | 152              | 152              | 152              | 152              |
| 033002                              | ADMINISTRATIVE OVERHEAD   | 69,554           | 69,554           | 70,590           | 70,590           | 70,590           |
| 034001                              | LOCK BOXES                | 6,000            | -                | 6,000            | 3,000            | 3,000            |
| 043028                              | MAINTENANCE               | 975              | -                | 975              | 3,975            | 3,975            |
| 044002                              | RENTAL OTHER EQUIPMENT    | -                | -                | -                | -                | -                |
| 048002                              | PROPERTY INSURANCE        | 4,272            | 4,272            | 4,486            | 7,532            | 7,532            |
| 053001                              | ADVERTISING               | 300              | -                | 300              | 300              | 300              |
| 054050                              | TRAINING-EDUCATION        | 100              | -                | 100              | 100              | 100              |
| 055050                              | PRINTING                  | 1,000            | -                | 1,000            | 1,000            | 1,000            |
| 056001                              | DUES PROFESSIONAL ORGANIZ | 400              | -                | 400              | 400              | 400              |
| 057101                              | TRAVEL AND CONFERENCE     | 25               | -                | 25               | 25               | 25               |
| 062001                              | OFFICE SUPPLIES           | 300              | -                | 300              | 300              | 300              |
| 062501                              | POSTAGE                   | 800              | -                | 800              | 800              | 800              |
| 063501                              | GASOLINE                  | 6,000            | -                | 9,000            | 9,000            | 9,000            |
|                                     |                           | <b>170,386</b>   | <b>78,078</b>    | <b>179,407</b>   | <b>182,020</b>   | <b>182,020</b>   |
| <b>ENGINEERING ADMIN PORTSMOUTH</b> |                           |                  |                  |                  |                  |                  |
| <b>50-751-610-52-100-492</b>        |                           |                  |                  |                  |                  |                  |
| 011001                              | REGULAR SALARIES          | 126,793          | 66,455           | 130,528          | 133,034          | 133,034          |
| 012001                              | PART TIME SALARIES        | 5,742            | -                | 5,742            | 7,460            | 7,460            |
| 014041                              | OVERTIME                  | 1,850            | 2,353            | 1,850            | -                | -                |
| 022001                              | SOCIAL SECURITY           | 8,044            | 5,157            | 9,897            | 8,711            | 8,711            |
| 022501                              | MEDICARE                  | 1,881            | 1,206            | 2,027            | 2,037            | 2,037            |
| 023001                              | RETIREMENT                | 11,340           | 8,060            | 14,498           | 12,869           | 12,869           |
| 031002                              | PROF SERVICES-ENGINEERING | 10,000           | -                | 10,000           | 45,000           | 45,000           |
| 033004                              | GROUNDWATER PROTECT PRGM  | 22,000           | 2,343            | 22,000           | 22,000           | 22,000           |
| 034103                              | TELEPHONE                 | 1,600            | 1,585            | 1,600            | 1,600            | 1,600            |

|        |                           | FY09           | FY09           | FY10           | FY11                  | FY11                        |
|--------|---------------------------|----------------|----------------|----------------|-----------------------|-----------------------------|
|        |                           | BUDGET         | ACTUAL         | BUDGET         | DEPARTMENT<br>REQUEST | CITY MANAGER<br>RECOMMENDED |
| 034104 | CELLULAR PHONES           | 2,000          | 1,182          | 2,000          | 2,000                 | 2,000                       |
| 039054 | PROF/SERVICES-CONTRACT    | 38,000         | 2,700          | 14,000         | 14,000                | 14,000                      |
| 043028 | MAINTENANCE               | 1,400          | 1,200          | 1,400          | 1,400                 | 1,400                       |
| 054050 | TRAINING-EDUCATION        | 3,000          | 1,759          | 3,000          | 3,000                 | 3,000                       |
| 055003 | UPDAING PLATS & MAPS      | 1,000          | -              | 1,000          | 1,000                 | 1,000                       |
| 055050 | PRINTING                  | -              | 24             | -              | -                     | -                           |
| 056001 | DUES PROFESSIONAL ORGANIZ | 2,900          | 1,594          | 2,900          | 2,900                 | 2,900                       |
| 057101 | TRAVEL AND CONFERENCE     | 1,500          | 1,515          | 1,500          | 1,500                 | 1,500                       |
| 057102 | TRAVEL REIMBURSEMENT      | -              | -              | -              | -                     | -                           |
| 062001 | OFFICE SUPPLIES           | 2,500          | 1,467          | 2,500          | 2,500                 | 2,500                       |
| 062007 | COMPUTER/PRINTER SUPPLIES | 5,000          | 705            | 5,000          | 5,000                 | 5,000                       |
| 062011 | OPERATING SUPPLIES        | 1,500          | 426            | 1,500          | 1,500                 | 1,500                       |
| 067001 | BOOKS & PERIODICALS       | 1,000          | 1,072          | 1,000          | 1,000                 | 1,000                       |
| 074000 | MACHINERY AND EQUIPMENT   | 12,000         | 1,000          | 12,000         | 7,000                 | 7,000                       |
|        |                           | <b>261,050</b> | <b>101,802</b> | <b>245,942</b> | <b>275,511</b>        | <b>275,511</b>              |

**ENGINEERING ADMINISTRATION PEASE**  
50-751-610-52-500-492

|        |                           |               |          |               |               |               |
|--------|---------------------------|---------------|----------|---------------|---------------|---------------|
| 011001 | REGULAR SALARIES          | 27,351        | -        | 27,351        | 23,477        | 23,477        |
| 012001 | PART TIME SALARIES        | -             | -        | -             | 1,316         | 1,316         |
| 014041 | OVERTIME                  | 407           | -        | 407           | -             | -             |
| 022001 | SOCIAL SECURITY           | 1,750         | -        | 1,750         | 1,537         | 1,537         |
| 022501 | MEDICARE                  | 409           | -        | 697           | 360           | 360           |
| 023001 | RETIREMENT                | 2,467         | -        | 2,516         | 2,271         | 2,271         |
| 031002 | PROF SERVICES-ENGINEERING | 1,000         | -        | 1,000         | 1,000         | 1,000         |
| 033004 | GROUNDWATER PROTECT PRGM  | 1,000         | -        | 1,000         | 1,000         | 1,000         |
| 034103 | TELEPHONE                 | 100           | -        | 100           | 100           | 100           |
| 034104 | CELLULAR PHONES           | -             | -        | -             | -             | -             |
| 039054 | PROF/SERVICES-CONTRACT    | -             | -        | -             | -             | -             |
| 043028 | MAINTENANCE               | 150           | -        | 150           | 150           | 150           |
| 054003 | STATE CERTIFICATION       | -             | -        | -             | -             | -             |
| 054050 | TRAINING-EDUCATION        | 294           | -        | 294           | 294           | 294           |
| 055003 | UPDAING PLATS & MAPS      | -             | -        | -             | -             | -             |
| 055050 | PRINTING                  | -             | -        | -             | -             | -             |
| 056001 | DUES PROFESSIONAL ORGANIZ | 500           | -        | 500           | 500           | 500           |
| 057101 | TRAVEL AND CONFERENCE     | -             | -        | -             | -             | -             |
| 057102 | TRAVEL REIMBURSEMENT      | 70            | -        | 70            | 70            | 70            |
| 062001 | OFFICE SUPPLIES           | 300           | -        | 300           | 300           | 300           |
| 062007 | COMPUTER/PRINTER SUPPLIES | 1,000         | -        | 1,000         | 1,000         | 1,000         |
| 062011 | OPERATING SUPPLIES        | 70            | -        | 70            | 70            | 70            |
| 067001 | BOOKS & PERIODICALS       | 100           | -        | 100           | 100           | 100           |
|        |                           | <b>36,968</b> | <b>-</b> | <b>37,305</b> | <b>33,545</b> | <b>33,545</b> |

**TREATMENT PLANT PORTSMOUTH**  
50-751-650-54-180-492

|        |                           |         |         |         |         |         |
|--------|---------------------------|---------|---------|---------|---------|---------|
| 011001 | REGULAR SALARIES          | 224,963 | 351,230 | 230,504 | 270,192 | 270,192 |
| 011060 | ON CALL MONITORING        | 14,601  | 13,003  | 14,601  | 14,601  | 14,601  |
| 012001 | PART TIME SALARIES        | -       | 1,734   | -       | -       | -       |
| 014041 | OVERTIME                  | 12,126  | 6,358   | 12,126  | 10,268  | 10,268  |
| 022001 | SOCIAL SECURITY           | 15,742  | 22,164  | 17,247  | 17,602  | 17,602  |
| 022501 | MEDICARE                  | 3,682   | 5,183   | 4,034   | 4,117   | 4,117   |
| 023001 | RETIREMENT                | 22,190  | 32,726  | 24,331  | 28,449  | 28,449  |
| 031003 | PROF SERVICES-SCADA       | 30,000  | 15,715  | 20,000  | 20,000  | 20,000  |
| 032001 | PROF SERVICES-O/S COUNSEL | 40,000  | 800     | 20,000  | 20,000  | 20,000  |
| 033001 | PROF SERVICES-TEMP        | -       | 576     | -       | -       | -       |
| 034103 | TELEPHONE                 | 15,000  | 11,061  | 15,000  | 15,000  | 15,000  |
| 034104 | CELLULAR PHONES           | 3,800   | 3,760   | 3,800   | 3,800   | 3,800   |
| 034201 | OUTSIDE PROGRAMMING       | 22,000  | -       | 22,000  | 22,000  | 22,000  |
| 039051 | SECURITY/ALARMS           | 1,500   | 264     | 1,500   | 1,500   | 1,500   |
| 039054 | PROF/SERVICES-CONTRACT    | -       | -       | -       | -       | -       |
| 041002 | ELECTRICITY               | 175,000 | 147,039 | 160,000 | 160,000 | 160,000 |
| 041101 | NATURAL GAS               | 18,000  | 1,874   | 18,000  | 18,000  | 18,000  |
| 041103 | PROPANE GAS               | -       | -       | -       | -       | -       |
| 041301 | RUBBISH REMOVAL           | 260     | -       | 260     | 260     | 260     |
| 041308 | SLUDGE DISPOSAL           | 75,000  | 100,871 | 50,000  | 50,000  | 50,000  |
| 043002 | REPAIRS-ELECTRICAL        | 10,000  | 6,044   | 10,000  | 10,000  | 10,000  |
| 043004 | REPAIRS-PLUMBING          | -       | -       | -       | -       | -       |
| 043005 | REPAIRS-HEATING SYSTEM    | 3,000   | 4,689   | 3,000   | 3,000   | 3,000   |
| 043014 | REPAIRS-OTHER             | -       | -       | -       | -       | -       |
| 043018 | REPAIRS-EQUIPMENT         | 20,000  | 13,256  | 20,000  | 20,000  | 20,000  |
| 043024 | REPAIRS-VEHICLE           | 10,000  | 20,943  | 10,000  | 10,000  | 10,000  |
| 043025 | REPAIRS-BLDINGS & GROUNDS | 3,000   | 2,192   | 3,000   | 3,000   | 3,000   |
| 043026 | REPAIRS-COMPUTER EQUIP    | 5,000   | 95      | 5,000   | 5,000   | 5,000   |
| 043028 | MAINTENANCE               | 13,000  | 4,665   | 13,000  | 13,000  | 13,000  |
| 043029 | LAGOONS                   | 30,000  | 18,006  | 30,000  | 15,000  | 15,000  |
| 043030 | BELLAMY DAM               | 10,000  | 255     | 10,000  | 10,000  | 10,000  |
| 043031 | SCADA EQUIPMENT           | 10,000  | -       | 10,000  | 10,000  | 10,000  |
| 044002 | RENTAL OTHER EQUIPMENT    | 1,000   | -       | 1,000   | 1,000   | 1,000   |
| 054003 | STATE CERTIFICATION       | 2,000   | 1,500   | 2,000   | 2,000   | 2,000   |
| 054050 | TRAINING-EDUCATION        | 2,500   | 2,806   | 2,500   | 2,500   | 2,500   |
| 055050 | PRINTING                  | -       | -       | -       | -       | -       |
| 056001 | DUES PROFESSIONAL ORGANIZ | -       | -       | -       | -       | -       |
| 056007 | OPERATIONAL PERMITS       | 600     | 335     | 600     | 600     | 600     |
| 057101 | TRAVEL AND CONFERENCE     | 3,000   | 235     | 3,000   | 3,000   | 3,000   |
| 057102 | TRAVEL REIMBURSEMENT      | 1,000   | 4       | 1,000   | 1,000   | 1,000   |
| 061001 | FIRST AID                 | 1,000   | 469     | 1,000   | 1,000   | 1,000   |
| 061002 | MISCELLANEOUS SUPPLIES    | -       | -       | -       | -       | -       |
| 062001 | OFFICE SUPPLIES           | 2,000   | 2,012   | 2,000   | 2,000   | 2,000   |
| 062007 | COMPUTER/PRINTER SUPPLIES | 500     | 27      | 500     | 500     | 500     |
| 062011 | OPERATING SUPPLIES        | 5,000   | 2,712   | 5,000   | 5,000   | 5,000   |
| 062501 | POSTAGE                   | 1,000   | 985     | 1,000   | 1,000   | 1,000   |
| 063600 | DIESEL FUEL               | 1,000   | -       | 1,000   | 1,000   | 1,000   |

|        |                         | FY09             | FY09             | FY10             | FY11             | FY11             |
|--------|-------------------------|------------------|------------------|------------------|------------------|------------------|
|        |                         | BUDGET           | ACTUAL           | BUDGET           | DEPARTMENT       | CITY MANAGER     |
|        |                         |                  |                  |                  | REQUEST          | RECOMMENDED      |
| 063800 | MATERIALS-CHEMICALS     | 269,700          | 282,469          | 297,000          | 297,000          | 297,000          |
| 067001 | BOOKS & PERIODICALS     | -                | -                | -                | -                | -                |
| 068001 | CLOTHING ALLOWANCE      | -                | 75               | -                | -                | -                |
| 068002 | CLOTHING                | 3,000            | 3,643            | 3,000            | 3,000            | 3,000            |
| 068003 | PROTECTIVE CLOTHING     | 750              | 411              | 750              | 750              | 750              |
| 068030 | TOOLS                   | 4,000            | 1,477            | 4,000            | 4,000            | 4,000            |
| 072000 | BUILDINGS               | 10,000           | 3,625            | 10,000           | 10,000           | 10,000           |
| 074000 | MACHINERY AND EQUIPMENT | 15,000           | 17,843           | 15,000           | 15,000           | 15,000           |
| 086001 | DEPRECIATION            | 81,161           | 81,161           | 90,155           | 142,328          | 142,328          |
| 098102 | INTEREST-BONDED DEBT    | 150,209          | 68,824           | 940,943          | 971,141          | 971,141          |
| 092101 | FINANCING FEES ON DEBT  | 150,000          | 83,648           | -                | -                | -                |
|        |                         | <b>1,492,284</b> | <b>1,338,764</b> | <b>2,108,851</b> | <b>2,218,608</b> | <b>2,218,608</b> |

**TREATMENT PLANT PEASE**  
50-751-650-54-580-492

|        |                           |                |               |                |                |                |
|--------|---------------------------|----------------|---------------|----------------|----------------|----------------|
| 011001 | REGULAR SALARIES          | 35,643         | -             | 35,643         | 50,661         | 50,661         |
| 014041 | OVERTIME                  | 533            | -             | 533            | 856            | 856            |
| 022001 | SOCIAL SECURITY           | 1,223          | -             | 1,223          | 3,300          | 3,300          |
| 022501 | MEDICARE                  | 286            | -             | 286            | 772            | 772            |
| 023001 | RETIREMENT                | 1,723          | -             | 2,353          | 4,876          | 4,876          |
| 031002 | PROF SERVICES-ENGINEERING | -              | -             | -              | -              | -              |
| 031003 | PROF SERVICES-SCADA       | 2,000          | -             | 2,000          | 2,000          | 2,000          |
| 034103 | TELEPHONE                 | 200            | -             | 200            | 200            | 200            |
| 034201 | OUTSIDE PROGRAMMING       | -              | -             | -              | -              | -              |
| 039010 | PROF/SERVICES-LAB TESTS   | 5,000          | -             | 5,000          | 5,000          | 5,000          |
| 039051 | SECURITY/ALARMS           | 200            | -             | 200            | 200            | 200            |
| 041002 | ELECTRICITY               | 25,000         | 16,648        | 25,000         | 25,000         | 25,000         |
| 041101 | NATURAL GAS               | 2,000          | 198           | 2,000          | 2,000          | 2,000          |
| 041102 | HEATING OIL               | 2,000          | -             | 2,000          | 2,000          | 2,000          |
| 041205 | WATER /SEWER FEES         | -              | -             | -              | -              | -              |
| 041301 | RUBBISH REMOVAL           | 100            | -             | 100            | 100            | 100            |
| 041308 | SLUDGE DISPOSAL           | -              | -             | -              | -              | -              |
| 043002 | REPAIRS-ELECTRICAL        | 500            | 32            | 500            | 500            | 500            |
| 043018 | REPAIRS-EQUIPMENT         | 5,000          | 1,212         | 5,000          | 5,000          | 5,000          |
| 043024 | REPAIRS-VEHICLE           | -              | -             | -              | -              | -              |
| 043025 | REPAIRS-BLDINGS & GROUNDS | 2,000          | 917           | 2,000          | 2,000          | 2,000          |
| 043027 | REPAIRS-OFFICE EQUIPMENT  | -              | -             | -              | -              | -              |
| 043028 | MAINTENANCE               | 200            | -             | 200            | 200            | 200            |
| 054050 | TRAINING-EDUCATION        | -              | -             | -              | -              | -              |
| 055050 | PRINTING                  | -              | -             | -              | -              | -              |
| 056001 | DUES PROFESSIONAL ORGANIZ | 50             | -             | 50             | 50             | 50             |
| 056007 | OPERATIONAL PERMITS       | -              | -             | -              | -              | -              |
| 057101 | TRAVEL AND CONFERENCE     | -              | -             | -              | -              | -              |
| 061001 | FIRST AID                 | 100            | -             | 100            | 100            | 100            |
| 062001 | OFFICE SUPPLIES           | -              | -             | -              | -              | -              |
| 063800 | MATERIALS-CHEMICALS       | 14,700         | 16,065        | 16,000         | 16,000         | 16,000         |
| 067001 | BOOKS & PERIODICALS       | -              | -             | -              | -              | -              |
| 068001 | CLOTHING ALLOWANCE        | 200            | -             | 200            | 200            | 200            |
| 068002 | CLOTHING                  | -              | -             | -              | -              | -              |
| 068003 | PROTECTIVE CLOTHING       | -              | -             | -              | -              | -              |
| 068004 | MATERIALS-MAINTENANCE     | -              | -             | -              | -              | -              |
| 068030 | TOOLS                     | 200            | -             | 200            | 200            | 200            |
| 074000 | MACHINERY AND EQUIPMENT   | 25,000         | 11,926        | 25,000         | 25,000         | 25,000         |
| 086001 | DEPRECIATION              | 32,115         | 32,115        | 32,115         | 32,115         | 32,115         |
|        |                           | <b>155,973</b> | <b>79,113</b> | <b>157,903</b> | <b>178,330</b> | <b>178,330</b> |

**LABORATORY PORTSMOUTH**  
50-751-650-55-180-492

|        |                           |                |                |                |               |               |
|--------|---------------------------|----------------|----------------|----------------|---------------|---------------|
| 011001 | REGULAR SALARIES          | 62,834         | 79,971         | 62,834         | 43,516        | 43,516        |
| 014041 | OVERTIME                  | 1,350          | 407            | 1,350          | 600           | 600           |
| 022001 | SOCIAL SECURITY           | 4,015          | 6,122          | 4,015          | 2,730         | 2,730         |
| 022501 | MEDICARE                  | 939            | 1,432          | 939            | 638           | 638           |
| 023001 | RETIREMENT                | 5,660          | 9,153          | 5,950          | 4,033         | 4,033         |
| 039010 | PROF/SERVICES-LAB TESTS   | 40,000         | 37,811         | 40,000         | 20,000        | 20,000        |
| 043018 | REPAIRS-EQUIPMENT         | 2,000          | 2,726          | 2,000          | 2,000         | 2,000         |
| 043028 | MAINTENANCE               | 1,500          | 474            | 1,500          | 1,500         | 1,500         |
| 044002 | RENTAL OTHER EQUIPMENT    | -              | -              | -              | -             | -             |
| 054003 | STATE CERTIFICATION       | -              | -              | -              | -             | -             |
| 054050 | TRAINING-EDUCATION        | -              | -              | -              | -             | -             |
| 056001 | DUES PROFESSIONAL ORGANIZ | 300            | 210            | 300            | 300           | 300           |
| 056007 | OPERATIONAL PERMITS       | 175            | -              | 175            | 175           | 175           |
| 057102 | TRAVEL REIMBURSEMENT      | 800            | 774            | 800            | 800           | 800           |
| 062001 | OFFICE SUPPLIES           | 500            | 367            | 500            | 500           | 500           |
| 062011 | OPERATING SUPPLIES        | 9,750          | 13,859         | 9,750          | 9,750         | 9,750         |
| 067001 | BOOKS & PERIODICALS       | 300            | 211            | 300            | 300           | 300           |
| 068003 | PROTECTIVE CLOTHING       | 100            | -              | 100            | 100           | 100           |
| 068004 | MATERIALS-MAINTENANCE     | -              | -              | -              | -             | -             |
| 068030 | TOOLS                     | 1,000          | 43             | 1,000          | 1,000         | 1,000         |
| 074000 | MACHINERY AND EQUIPMENT   | 9,000          | 1,012          | 9,000          | 9,000         | 9,000         |
|        |                           | <b>140,223</b> | <b>154,573</b> | <b>140,513</b> | <b>96,942</b> | <b>96,942</b> |

**LABORATORY PEASE**  
50-751-650-55-580-492

|        |                         |        |       |        |        |        |
|--------|-------------------------|--------|-------|--------|--------|--------|
| 011001 | REGULAR SALARIES        | 11,088 | -     | 11,088 | 7,679  | 7,679  |
| 014041 | OVERTIME                | -      | -     | -      | -      | -      |
| 022001 | SOCIAL SECURITY         | 694    | -     | 694    | 2,730  | 2,730  |
| 022501 | MEDICARE                | 162    | -     | 162    | 113    | 113    |
| 023001 | RETIREMENT              | 978    | -     | 1,091  | 712    | 712    |
| 031003 | PROF SERVICES-SCADA     | -      | -     | -      | -      | -      |
| 034103 | TELEPHONE               | -      | -     | -      | -      | -      |
| 039010 | PROF/SERVICES-LAB TESTS | 10,000 | 3,055 | 10,000 | 10,000 | 10,000 |

|        |                           | FY09          | FY09         | FY10          | FY11          | FY11          |
|--------|---------------------------|---------------|--------------|---------------|---------------|---------------|
|        |                           | BUDGET        | ACTUAL       | BUDGET        | DEPARTMENT    | CITY MANAGER  |
|        |                           |               |              |               | REQUEST       | RECOMMENDED   |
| 043018 | REPAIRS-EQUIPMENT         | 500           | -            | 500           | 500           | 500           |
| 056001 | DUES PROFESSIONAL ORGANIZ | -             | -            | -             | -             | -             |
| 056007 | OPERATIONAL PERMITS       | -             | -            | -             | -             | -             |
| 057101 | TRAVEL AND CONFERENCE     | -             | -            | -             | -             | -             |
| 061002 | MISCELLANEOUS SUPPLIES    | 100           | 72           | 100           | 100           | 100           |
| 062001 | OFFICE SUPPLIES           | -             | -            | -             | -             | -             |
| 062011 | OPERATING SUPPLIES        | 500           | 962          | 500           | 500           | 500           |
| 068030 | TOOLS                     | -             | -            | -             | -             | -             |
| 074000 | MACHINERY AND EQUIPMENT   | 3,000         | -            | 3,000         | 3,000         | 3,000         |
|        |                           | <b>27,022</b> | <b>4,089</b> | <b>27,135</b> | <b>25,334</b> | <b>25,334</b> |

**TREATMENT-WELLS PORTSMOUTH**  
50-751-650-56-171-492

|        |                           |                |               |                |                |                |
|--------|---------------------------|----------------|---------------|----------------|----------------|----------------|
| 011001 | REGULAR SALARIES          | 33,721         | -             | 33,721         | 10,132         | 10,132         |
| 014041 | OVERTIME                  | 4,425          | 3,759         | 4,425          | 2,929          | 2,929          |
| 022001 | SOCIAL SECURITY           | 2,365          | 219           | 2,365          | 660            | 660            |
| 022501 | MEDICARE                  | 553            | 51            | 553            | 154            | 154            |
| 023001 | RETIREMENT                | 3,334          | 329           | 3,357          | 975            | 975            |
| 039010 | PROF/SERVICES-LAB TESTS   | -              | -             | -              | -              | -              |
| 039054 | PROF/SERVICES-CONTRACT    | 5,000          | -             | 5,000          | 5,000          | 5,000          |
| 041002 | ELECTRICITY               | 80,000         | 48,103        | 60,000         | 60,000         | 60,000         |
| 041101 | NATURAL GAS               | -              | -             | -              | -              | -              |
| 041205 | WATER /SEWER FEES         | -              | -             | -              | -              | -              |
| 043002 | REPAIRS-ELECTRICAL        | 12,000         | 191           | 12,000         | 12,000         | 12,000         |
| 043018 | REPAIRS-EQUIPMENT         | 12,000         | 1,394         | 12,000         | 12,000         | 12,000         |
| 043025 | REPAIRS-BLDINGS & GROUNDS | 10,000         | 843           | 10,000         | 10,000         | 10,000         |
| 043028 | MAINTENANCE               | 15,000         | 1,646         | 15,000         | 15,000         | 15,000         |
| 043032 | GENERATOR MAINTENANCE     | 1,000          | 123           | 1,000          | 1,000          | 1,000          |
| 062011 | OPERATING SUPPLIES        | 1,500          | 225           | 1,500          | 1,500          | 1,500          |
| 063800 | MATERIALS-CHEMICALS       | 5,600          | 894           | 5,600          | 5,600          | 5,600          |
| 068030 | TOOLS                     | -              | -             | -              | -              | -              |
| 098102 | INTEREST-BONDED DEBT      | 40,000         | -             | -              | 42,500         | 42,500         |
| 074000 | MACHINERY AND EQUIPMENT   | 47,000         | 7,039         | 47,000         | 30,000         | 30,000         |
| 086001 | DEPRECIATION              | 20,551         | 20,551        | 20,551         | 20,526         | 20,526         |
|        |                           | <b>294,049</b> | <b>85,366</b> | <b>234,072</b> | <b>229,976</b> | <b>229,976</b> |

**TREATMENT-WELLS PEASE**  
50-751-650-56-571-492

|        |                    |                |               |                |               |               |
|--------|--------------------|----------------|---------------|----------------|---------------|---------------|
| 011001 | REGULAR SALARIES   | 34,325         | -             | 34,325         | 6,755         | 6,755         |
| 014041 | OVERTIME           | 4,125          | 3,807         | 4,125          | 3,080         | 3,080         |
| 022001 | SOCIAL SECURITY    | 2,403          | 222           | 2,403          | 440           | 440           |
| 022501 | MEDICARE           | 562            | 52            | 562            | 103           | 103           |
| 023001 | RETIREMENT         | 3,388          | 333           | 3,892          | 650           | 650           |
| 041002 | ELECTRICITY        | 25,000         | 13,551        | 25,000         | 18,000        | 18,000        |
| 041101 | NATURAL GAS        | 3,000          | 587           | 3,000          | 3,000         | 3,000         |
| 043018 | REPAIRS-EQUIPMENT  | 2,000          | 262           | 2,000          | 2,000         | 2,000         |
| 043028 | MAINTENANCE        | 4,000          | 3,771         | 4,000          | 4,000         | 4,000         |
| 062011 | OPERATING SUPPLIES | 500            | 26            | 500            | 500           | 500           |
| 068030 | TOOLS              | 1,000          | -             | 1,000          | 1,000         | 1,000         |
| 086001 | DEPRECIATION       | 39,891         | 30,547        | 39,891         | 39,891        | 39,891        |
|        |                    | <b>120,194</b> | <b>53,159</b> | <b>120,698</b> | <b>79,419</b> | <b>79,419</b> |

**STORAGE TANKS PORTSMOUTH**  
50-751-650-571-77-492

|        |                           |                |               |               |               |               |
|--------|---------------------------|----------------|---------------|---------------|---------------|---------------|
| 031002 | PROF SERVICES-ENGINEERING | 3,000          | -             | 3,000         | 3,000         | 3,000         |
| 041002 | ELECTRICITY               | 10,000         | 5,371         | 10,000        | 7,000         | 7,000         |
| 043018 | REPAIRS-EQUIPMENT         | 3,000          | 283           | 3,000         | 3,000         | 3,000         |
| 043025 | REPAIRS-BLDINGS & GROUNDS | 2,000          | 515           | 2,000         | 2,000         | 2,000         |
| 043028 | MAINTENANCE               | 3,000          | 925           | 3,000         | 3,000         | 3,000         |
| 044002 | RENTAL OTHER EQUIPMENT    | -              | -             | -             | -             | -             |
| 086001 | DEPRECIATION              | 41,329         | 41,329        | 41,329        | 41,329        | 41,329        |
| 098102 | INTEREST-BONDED DEBT      | 49,865         | 32,505        | 30,338        | 28,172        | 28,172        |
|        |                           | <b>112,194</b> | <b>80,929</b> | <b>92,667</b> | <b>87,501</b> | <b>87,501</b> |

**STORAGE TANKS PEASE**  
50-751-650-57-577-492

|        |                           |               |              |               |               |               |
|--------|---------------------------|---------------|--------------|---------------|---------------|---------------|
| 031002 | PROF SERVICES-ENGINEERING | 3,000         | -            | 3,000         | 3,000         | 3,000         |
| 041002 | ELECTRICITY               | 3,000         | 778          | 3,000         | 3,000         | 3,000         |
| 043018 | REPAIRS-EQUIPMENT         | 600           | 405          | 600           | 600           | 600           |
| 043025 | REPAIRS-BLDINGS & GROUNDS | 1,000         | -            | 1,000         | 1,000         | 1,000         |
| 043028 | MAINTENANCE               | 1,000         | -            | 1,000         | 1,000         | 1,000         |
| 043031 | SCADA EQUIPMENT           | -             | -            | -             | -             | -             |
| 086001 | DEPRECIATION              | 1,842         | 1,842        | 1,842         | 1,842         | 1,842         |
|        |                           | <b>10,442</b> | <b>3,025</b> | <b>10,442</b> | <b>10,442</b> | <b>10,442</b> |

**BOOSTER STATION PORTSMOUTH**  
50-751-650-58-182-492

|        |                           |        |        |        |        |        |
|--------|---------------------------|--------|--------|--------|--------|--------|
| 034103 | TELEPHONE                 | 1,000  | -      | 1,000  | 1,000  | 1,000  |
| 039051 | SECURITY/ALARMS           | 500    | 2,290  | 500    | 500    | 500    |
| 041002 | ELECTRICITY               | 75,000 | 67,021 | 75,000 | 75,000 | 75,000 |
| 041102 | HEATING OIL               | 4,500  | 4,046  | 4,500  | 4,500  | 4,500  |
| 041103 | PROPANE GAS               | -      | -      | -      | -      | -      |
| 043018 | REPAIRS-EQUIPMENT         | 2,000  | 280    | 2,000  | 2,000  | 2,000  |
| 043025 | REPAIRS-BLDINGS & GROUNDS | 15,000 | 4,893  | 10,000 | 5,000  | 5,000  |
| 043028 | MAINTENANCE               | 3,000  | 670    | 3,000  | 3,000  | 3,000  |
| 043032 | GENERATOR MAINTENANCE     | 500    | -      | 500    | 500    | 500    |
| 062011 | OPERATING SUPPLIES        | 500    | 37     | 500    | 500    | 500    |

|        |                         | FY09           | FY09           | FY10           | FY11               | FY11                     |
|--------|-------------------------|----------------|----------------|----------------|--------------------|--------------------------|
|        |                         | BUDGET         | ACTUAL         | BUDGET         | DEPARTMENT REQUEST | CITY MANAGER RECOMMENDED |
| 074000 | MACHINERY AND EQUIPMENT | 15,000         | 15,475         | 15,000         | 15,000             | 15,000                   |
| 086001 | DEPRECIATION            | 55,384         | 55,384         | 55,384         | 55,384             | 55,384                   |
| 098102 | INTEREST-BONDED DEBT    | 12,119         | 8,350          | 7,753          | -                  | -                        |
|        |                         | <b>184,503</b> | <b>158,445</b> | <b>175,137</b> | <b>162,384</b>     | <b>162,384</b>           |

**DISTRIBUTION-ADMIN PORTSMOUTH**  
50-751-660-51-100-492

|        |                           |                |                |                |                |                |
|--------|---------------------------|----------------|----------------|----------------|----------------|----------------|
| 011001 | REGULAR SALARIES          | 155,797        | 174,897        | 150,915        | 144,560        | 144,560        |
| 012001 | PART TIME SALARIES        | -              | 677            | -              | 5,742          | 5,742          |
| 014041 | OVERTIME                  | 9,289          | 10,688         | 9,289          | 9,588          | 9,588          |
| 022001 | SOCIAL SECURITY           | 9,074          | 11,131         | 9,395          | 9,557          | 9,557          |
| 022501 | MEDICARE                  | 2,122          | 2,604          | 1,964          | 2,235          | 2,235          |
| 023001 | RETIREMENT                | 10,146         | 16,454         | 14,824         | 14,120         | 14,120         |
| 034101 | PAGERS                    | 3,500          | 506            | 3,500          | 3,500          | 3,500          |
| 034103 | TELEPHONE                 | 3,500          | 4,052          | 3,500          | 3,500          | 3,500          |
| 034104 | CELLULAR PHONES           | 2,200          | 1,607          | 2,200          | 2,200          | 2,200          |
| 041002 | ELECTRICITY               | 300            | -              | 300            | 300            | 300            |
| 041102 | HEATING OIL               | -              | -              | -              | -              | -              |
| 041205 | WATER /SEWER FEES         | -              | -              | -              | -              | -              |
| 041305 | HOUSEHOLD HAZARDOUS WASTE | 23,000         | 13,021         | 23,000         | 13,000         | 13,000         |
| 043018 | REPAIRS-EQUIPMENT         | 10,000         | 13,871         | 10,000         | 10,000         | 10,000         |
| 043024 | REPAIRS-VEHICLE           | 25,000         | 56,965         | 25,000         | 25,000         | 25,000         |
| 043025 | REPAIRS-BLDINGS & GROUNDS | 3,000          | -              | 3,000          | 3,000          | 3,000          |
| 043027 | REPAIRS-OFFICE EQUIPMENT  | 1,000          | 424            | 1,000          | 1,000          | 1,000          |
| 043028 | MAINTENANCE               | 1,500          | 1,709          | 1,500          | 1,500          | 1,500          |
| 044002 | RENTAL OTHER EQUIPMENT    | 8,000          | 285            | 8,000          | 8,000          | 8,000          |
| 054003 | STATE CERTIFICATION       | 500            | -              | 500            | 500            | 500            |
| 054050 | TRAINING-EDUCATION        | 2,000          | 1,089          | 2,000          | 2,000          | 2,000          |
| 055050 | PRINTING                  | 900            | -              | 900            | 900            | 900            |
| 056001 | DUES PROFESSIONAL ORGANIZ | 450            | -              | 450            | 450            | 450            |
| 061001 | FIRST AID                 | 500            | 509            | 500            | 500            | 500            |
| 062001 | OFFICE SUPPLIES           | 600            | 400            | 600            | 600            | 600            |
| 062011 | OPERATING SUPPLIES        | 600            | 72             | 600            | 600            | 600            |
| 065051 | GROUNDSKEEPING-DIG SAFE   | 2,900          | 36             | 2,900          | 2,900          | 2,900          |
| 067001 | BOOKS & PERIODICALS       | 150            | -              | 150            | 150            | 150            |
| 068002 | CLOTHING                  | 6,000          | 7,178          | 6,000          | 6,000          | 6,000          |
| 068003 | PROTECTIVE CLOTHING       | 500            | 75             | 500            | 500            | 500            |
| 068008 | MATERIALS-STOCK           | -              | -              | -              | -              | -              |
| 068012 | STOCK INVENTORY           | -              | 74,066         | -              | -              | -              |
| 068015 | MATERIALS-CAP OUTLAY BILL | -              | -              | -              | -              | -              |
| 068016 | MATERIALS                 | 10,000         | 756            | 10,000         | 10,000         | 10,000         |
| 068030 | TOOLS                     | 7,000          | 3,388          | 7,000          | 7,000          | 7,000          |
| 074000 | MACHINERY AND EQUIPMENT   | 12,000         | 1,453          | 12,000         | 12,000         | 12,000         |
| 086001 | DEPRECIATION              | 278,045        | 278,045        | 278,045        | 250,241        | 250,241        |
|        |                           | <b>589,573</b> | <b>675,956</b> | <b>589,532</b> | <b>551,143</b> | <b>551,143</b> |

**DISTRIBUTION-ADMIN PEASE**  
50-751-660-51-500-492

|        |                           |               |          |               |               |               |
|--------|---------------------------|---------------|----------|---------------|---------------|---------------|
| 011001 | REGULAR SALARIES          | 32,898        | -        | 32,898        | 31,623        | 31,623        |
| 014041 | OVERTIME                  | -             | -        | -             | -             | -             |
| 022001 | SOCIAL SECURITY           | 1,517         | -        | 1,517         | 1,961         | 1,961         |
| 022501 | MEDICARE                  | 355           | -        | 355           | 459           | 459           |
| 023001 | RETIREMENT                | 1,667         | -        | 3,267         | 2,897         | 2,897         |
| 034103 | TELEPHONE                 | 250           | -        | 250           | 250           | 250           |
| 039051 | SECURITY/ALARMS           | 100           | -        | 100           | 100           | 100           |
| 041002 | ELECTRICITY               | 20            | -        | 20            | 20            | 20            |
| 041102 | HEATING OIL               | -             | -        | -             | -             | -             |
| 041205 | WATER /SEWER FEES         | -             | -        | -             | -             | -             |
| 043018 | REPAIRS-EQUIPMENT         | 1,500         | -        | 1,500         | 1,500         | 1,500         |
| 043025 | REPAIRS-BLDINGS & GROUNDS | 600           | -        | 600           | 600           | 600           |
| 043027 | REPAIRS-OFFICE EQUIPMENT  | 60            | -        | 60            | 60            | 60            |
| 043028 | MAINTENANCE               | 400           | -        | 400           | 400           | 400           |
| 044002 | RENTAL OTHER EQUIPMENT    | -             | -        | -             | -             | -             |
| 054003 | STATE CERTIFICATION       | 50            | -        | 50            | 50            | 50            |
| 054050 | TRAINING-EDUCATION        | 100           | -        | 100           | 100           | 100           |
| 055050 | PRINTING                  | -             | -        | -             | -             | -             |
| 056001 | DUES PROFESSIONAL ORGANIZ | -             | -        | -             | -             | -             |
| 061001 | FIRST AID                 | 60            | -        | 60            | 60            | 60            |
| 062001 | OFFICE SUPPLIES           | 100           | -        | 100           | 100           | 100           |
| 062011 | OPERATING SUPPLIES        | 100           | -        | 100           | 100           | 100           |
| 067001 | BOOKS & PERIODICALS       | -             | -        | -             | -             | -             |
| 068002 | CLOTHING                  | 1,000         | -        | 1,000         | 1,000         | 1,000         |
| 068016 | MATERIALS                 | 1,700         | -        | 1,700         | 1,700         | 1,700         |
| 068030 | TOOLS                     | 2,300         | -        | 2,300         | 2,300         | 2,300         |
| 074000 | MACHINERY AND EQUIPMENT   | 1,500         | -        | 1,500         | 1,500         | 1,500         |
|        |                           | <b>46,277</b> | <b>-</b> | <b>47,877</b> | <b>46,780</b> | <b>46,780</b> |

**DISTRIBUTION CROSSCONNECT**  
50-751-660-53-100-492

|        |                        |        |        |        |        |        |
|--------|------------------------|--------|--------|--------|--------|--------|
| 011001 | REGULAR SALARIES       | 23,346 | 30,318 | 23,346 | 22,588 | 22,588 |
| 011058 | BILLABLE SALARIES      | -      | -      | -      | -      | -      |
| 014041 | OVERTIME               | 500    | 314    | 500    | 799    | 799    |
| 014053 | O/T-BILLABLE           | -      | -      | -      | -      | -      |
| 022001 | SOCIAL SECURITY        | 1,478  | 1,756  | 1,478  | 1,450  | 1,450  |
| 022501 | MEDICARE               | 346    | 411    | 346    | 339    | 339    |
| 023001 | RETIREMENT             | 2,084  | 2,683  | 3,184  | 2,142  | 2,142  |
| 039054 | PROF/SERVICES-CONTRACT | -      | -      | 24,000 | -      | -      |
| 043028 | MAINTENANCE            | 500    | 591    | 500    | 500    | 500    |
| 054003 | STATE CERTIFICATION    | 100    | -      | 100    | 100    | 100    |
| 054050 | TRAINING-EDUCATION     | 500    | 204    | 500    | 500    | 500    |

|        |                           | FY09          | FY09          | FY10          | FY11                  | FY11                        |
|--------|---------------------------|---------------|---------------|---------------|-----------------------|-----------------------------|
|        |                           | BUDGET        | ACTUAL        | BUDGET        | DEPARTMENT<br>REQUEST | CITY MANAGER<br>RECOMMENDED |
| 055050 | PRINTING                  | -             | -             | -             | -                     | -                           |
| 056001 | DUES PROFESSIONAL ORGANIZ | 700           | 392           | 700           | 700                   | 700                         |
| 057101 | TRAVEL AND CONFERENCE     | 300           | 100           | 300           | 300                   | 300                         |
| 062001 | OFFICE SUPPLIES           | 100           | 643           | 100           | 100                   | 100                         |
| 062011 | OPERATING SUPPLIES        | 3,500         | 939           | 3,500         | 3,500                 | 3,500                       |
| 067001 | BOOKS & PERIODICALS       | 200           | -             | 200           | 200                   | 200                         |
| 074000 | MACHINERY AND EQUIPMENT   | 1,000         | -             | 1,000         | 1,000                 | 1,000                       |
|        |                           | <b>34,654</b> | <b>38,350</b> | <b>59,754</b> | <b>34,218</b>         | <b>34,218</b>               |

**DISTRIBUTION CROSSCONNECT**

50-751-660-53-500-492

|        |                           |              |          |              |              |              |
|--------|---------------------------|--------------|----------|--------------|--------------|--------------|
| 011001 | REGULAR SALARIES          | 4,850        | -        | 4,850        | 4,518        | 4,518        |
| 014041 | OVERTIME                  | 50           | -        | 50           | -            | -            |
| 022001 | SOCIAL SECURITY           | 340          | -        | 340          | 280          | 280          |
| 022501 | MEDICARE                  | 79           | -        | 79           | 66           | 66           |
| 023001 | RETIREMENT                | 479          | -        | 878          | 414          | 414          |
| 043028 | MAINTENANCE               | 70           | -        | 70           | 70           | 70           |
| 054003 | STATE CERTIFICATION       | 30           | -        | 30           | 30           | 30           |
| 054050 | TRAINING-EDUCATION        | 150          | -        | 150          | 150          | 150          |
| 056001 | DUES PROFESSIONAL ORGANIZ | 100          | -        | 100          | 100          | 100          |
| 057101 | TRAVEL AND CONFERENCE     | 25           | -        | 25           | 25           | 25           |
| 062001 | OFFICE SUPPLIES           | 30           | -        | 30           | 30           | 30           |
| 062004 | PHOTO SUPPLIES            | -            | -        | -            | -            | -            |
| 067001 | BOOKS & PERIODICALS       | -            | -        | -            | -            | -            |
|        |                           | <b>6,203</b> | <b>-</b> | <b>6,602</b> | <b>5,683</b> | <b>5,683</b> |

**DISTRIBUTION-MAINS PORTSMOUTH**

50-751-660-61-100-492

|        |                           |                |                |                |                |                |
|--------|---------------------------|----------------|----------------|----------------|----------------|----------------|
| 011001 | REGULAR SALARIES          | 72,748         | 68,010         | 60,755         | 58,728         | 58,728         |
| 011056 | CAPITAL OUTLAY-LABOR      | -              | -              | -              | -              | -              |
| 011058 | BILLABLE SALARIES         | -              | -              | -              | -              | -              |
| 011059 | BILLABLE CAP OUTLAY SAL   | -              | -              | -              | -              | -              |
| 012001 | PART TIME SALARIES        | -              | 1,788          | -              | -              | -              |
| 014041 | OVERTIME                  | 19,952         | 20,414         | 19,952         | 21,573         | 21,573         |
| 014053 | O/T-BILLABLE              | -              | -              | -              | -              | -              |
| 014056 | O/T CAPITAL OUTLAY LABOR  | -              | -              | -              | -              | -              |
| 022001 | SOCIAL SECURITY           | 5,790          | 5,323          | 5,790          | 4,979          | 4,979          |
| 022501 | MEDICARE                  | 1,354          | 1,245          | 1,354          | 1,164          | 1,164          |
| 023001 | RETIREMENT                | 6,744          | 7,726          | 7,944          | 7,356          | 7,356          |
| 039011 | CAPITAL OUTLAY-CONTRACT   | -              | -              | -              | -              | -              |
| 039012 | CAP OUTLAY-CONTRACT-BILL  | -              | -              | -              | -              | -              |
| 039052 | PROF/SERV-CAPITAL OUTLAY  | -              | -              | -              | -              | -              |
| 039054 | PROF/SERVICES-CONTRACT    | 8,000          | 3,729          | 8,000          | 8,000          | 8,000          |
| 039055 | PROF/SERV-CONTRACT-BILLAB | -              | -              | -              | -              | -              |
| 044002 | RENTAL OTHER EQUIPMENT    | -              | 383            | -              | -              | -              |
| 068008 | MATERIALS-STOCK           | 9,500          | -              | 9,500          | 9,500          | 9,500          |
| 068010 | CAP OUTLAY-STOCK MATERIAL | -              | -              | -              | -              | -              |
| 068014 | MATERIALS-CAPITAL OUTLAY  | -              | -              | -              | -              | -              |
| 068016 | MATERIALS                 | 60,000         | 43,654         | 60,000         | 60,000         | 60,000         |
| 098102 | INTEREST-BONDED DEBT      | 214,931        | 133,344        | 124,454        | 115,565        | 115,565        |
|        |                           | <b>399,019</b> | <b>285,615</b> | <b>297,749</b> | <b>286,865</b> | <b>286,865</b> |

**DISTRIBUTION-MAINS PEASE**

50-751-660-61-500-492

|        |                           |               |              |               |               |               |
|--------|---------------------------|---------------|--------------|---------------|---------------|---------------|
| 011001 | REGULAR SALARIES          | 14,550        | 517          | 4,550         | 4,515         | 4,515         |
| 011058 | BILLABLE SALARIES         | -             | -            | -             | -             | -             |
| 012001 | PART TIME SALARIES        | -             | -            | -             | -             | -             |
| 014041 | OVERTIME                  | 500           | 467          | 500           | 799           | 799           |
| 014053 | O/T-BILLABLE              | -             | -            | -             | -             | -             |
| 022001 | SOCIAL SECURITY           | 942           | 60           | 942           | 329           | 329           |
| 022501 | MEDICARE                  | 220           | 14           | 220           | 77            | 77            |
| 023001 | RETIREMENT                | 1,044         | 86           | 1,544         | 487           | 487           |
| 043018 | REPAIRS-EQUIPMENT         | -             | -            | -             | -             | -             |
| 043028 | MAINTENANCE               | -             | -            | -             | -             | -             |
| 044002 | RENTAL OTHER EQUIPMENT    | 1,500         | -            | 1,500         | 1,500         | 1,500         |
| 068008 | MATERIALS-STOCK           | -             | -            | -             | -             | -             |
| 068014 | MATERIALS-CAPITAL OUTLAY  | -             | -            | -             | -             | -             |
| 068015 | MATERIALS-CAP OUTLAY BILL | -             | -            | -             | -             | -             |
| 068016 | MATERIALS                 | 3,000         | 52           | 3,000         | 3,000         | 3,000         |
|        |                           | <b>21,756</b> | <b>1,196</b> | <b>12,256</b> | <b>10,707</b> | <b>10,707</b> |

**DISTRIBUTION-SERVICES PORTSMOUTH**

50-751-660-62-100-492

|        |                           |        |        |        |        |        |
|--------|---------------------------|--------|--------|--------|--------|--------|
| 011001 | REGULAR SALARIES          | 72,748 | 74,946 | 64,748 | 63,245 | 63,245 |
| 011056 | CAPITAL OUTLAY-LABOR      | -      | -      | -      | -      | -      |
| 011058 | BILLABLE SALARIES         | -      | -      | -      | -      | -      |
| 011059 | BILLABLE CAP OUTLAY SAL   | -      | -      | -      | -      | -      |
| 012001 | PART TIME SALARIES        | 8,776  | 1,853  | 8,776  | -      | -      |
| 014041 | OVERTIME                  | 5,952  | 6,694  | 5,952  | 6,392  | 6,392  |
| 014056 | O/T CAPITAL OUTLAY LABOR  | -      | -      | -      | -      | -      |
| 014057 | O/T BILLABLE CAP OUTLAY   | -      | -      | -      | -      | -      |
| 022001 | SOCIAL SECURITY           | 4,922  | 5,650  | 4,922  | 4,317  | 4,317  |
| 022501 | MEDICARE                  | 1,151  | 1,321  | 1,151  | 1,010  | 1,010  |
| 023001 | RETIREMENT                | 5,521  | 8,214  | 5,521  | 6,379  | 6,379  |
| 039011 | CAPITAL OUTLAY-CONTRACT   | 2,000  | -      | 2,000  | 2,000  | 2,000  |
| 039052 | PROF/SERV-CAPITAL OUTLAY  | -      | -      | -      | -      | -      |
| 039053 | PROF/SERV-CAP OUTLAY BILL | -      | -      | -      | -      | -      |
| 039054 | PROF/SERVICES-CONTRACT    | 2,000  | 4,620  | 2,000  | 2,000  | 2,000  |
| 039055 | PROF/SERV-CONTRACT-BILLAB | -      | 1,602  | -      | -      | -      |

|   |                           | FY09           | FY09           | FY10           | FY11               | FY11                     |
|---|---------------------------|----------------|----------------|----------------|--------------------|--------------------------|
|   |                           | BUDGET         | ACTUAL         | BUDGET         | DEPARTMENT REQUEST | CITY MANAGER RECOMMENDED |
| 068004                                  | MATERIALS-MAINTENANCE     | -              | -              | -              | -                  | -                        |
| 068008                                  | MATERIALS-STOCK           | 7,500          | -              | 7,500          | 7,500              | 7,500                    |
| 068010                                  | CAP OUTLAY-STOCK MATERIAL | 12,500         | -              | 12,500         | 12,500             | 12,500                   |
| 068013                                  | MATERIAL-BILLABLE         | -              | -              | -              | -                  | -                        |
| 068014                                  | MATERIALS-CAPITAL OUTLAY  | 10,000         | -              | 10,000         | 10,000             | 10,000                   |
| 068016                                  | MATERIALS                 | 15,000         | 4,754          | 15,000         | 15,000             | 15,000                   |
| 074000                                  | MACHINERY AND EQUIPMENT   | 2,500          | -              | 2,500          | 2,500              | 2,500                    |
| 086001                                  | DEPRECIATION              | -              | -              | -              | -                  | -                        |
|   |                           | <b>150,570</b> | <b>109,655</b> | <b>142,570</b> | <b>132,843</b>     | <b>132,843</b>           |
| <b>DISTRIBUTION-SERVICES PEASE</b>      |                           |                |                |                |                    |                          |
| <b>50-751-660-62-500-492</b>            |                           |                |                |                |                    |                          |
| 011001                                  | REGULAR SALARIES          | 7,275          | 175            | 2,758          | 4,518              | 4,518                    |
| 011056                                  | CAPITAL OUTLAY-LABOR      | -              | -              | -              | -                  | -                        |
| 011058                                  | BILLABLE SALARIES         | -              | -              | -              | -                  | -                        |
| 012001                                  | PART TIME SALARIES        | -              | 12             | -              | -                  | -                        |
| 014041                                  | OVERTIME                  | 995            | 303            | 995            | 799                | 799                      |
| 014053                                  | O/T-BILLABLE              | -              | -              | -              | -                  | -                        |
| 014056                                  | O/T CAPITAL OUTLAY LABOR  | -              | -              | -              | -                  | -                        |
| 014057                                  | O/T BILLABLE CAP OUTLAY   | -              | -              | -              | -                  | -                        |
| 022001                                  | SOCIAL SECURITY           | 517            | 30             | 517            | 330                | 330                      |
| 022501                                  | MEDICARE                  | 121            | 7              | 121            | 77                 | 77                       |
| 023001                                  | RETIREMENT                | 587            | 42             | 587            | 487                | 487                      |
| 039054                                  | PROF/SERVICES-CONTRACT    | -              | -              | -              | -                  | -                        |
| 068008                                  | MATERIALS-STOCK           | 6,000          | -              | 6,000          | 6,000              | 6,000                    |
| 068013                                  | MATERIAL-BILLABLE         | -              | -              | -              | -                  | -                        |
| 068014                                  | MATERIALS-CAPITAL OUTLAY  | -              | -              | -              | -                  | -                        |
| 068016                                  | MATERIALS                 | 1,000          | 220            | 1,000          | 1,000              | 1,000                    |
| 068030                                  | TOOLS                     | -              | -              | -              | -                  | -                        |
| 074000                                  | MACHINERY AND EQUIPMENT   | -              | -              | -              | -                  | -                        |
|   |                           | <b>16,495</b>  | <b>788</b>     | <b>11,978</b>  | <b>13,211</b>      | <b>13,211</b>            |
| <b>DISTRIBUTION-HYDRANTS PORTSMOUTH</b> |                           |                |                |                |                    |                          |
| <b>50-751-660-63-100-492</b>            |                           |                |                |                |                    |                          |
| 011001                                  | REGULAR SALARIES          | 38,799         | 33,867         | 38,799         | 36,140             | 36,140                   |
| 011056                                  | CAPITAL OUTLAY-LABOR      | -              | -              | -              | -                  | -                        |
| 011059                                  | BILLABLE CAP OUTLAY SAL   | -              | -              | -              | -                  | -                        |
| 012001                                  | PART TIME SALARIES        | -              | 1,978          | -              | -                  | -                        |
| 014041                                  | OVERTIME                  | 26,639         | 32,703         | 26,639         | 28,764             | 28,764                   |
| 014056                                  | O/T CAPITAL OUTLAY LABOR  | -              | -              | -              | -                  | -                        |
| 014057                                  | O/T BILLABLE CAP OUTLAY   | -              | -              | -              | -                  | -                        |
| 022001                                  | SOCIAL SECURITY           | 4,080          | 4,470          | 4,080          | 4,024              | 4,024                    |
| 022501                                  | MEDICARE                  | 954            | 1,045          | 954            | 941                | 941                      |
| 023001                                  | RETIREMENT                | 4,995          | 6,461          | 4,995          | 5,945              | 5,945                    |
| 039052                                  | PROF/SERV-CAPITAL OUTLAY  | -              | -              | -              | -                  | -                        |
| 039054                                  | PROF/SERVICES-CONTRACT    | 3,000          | 173            | 3,000          | 3,000              | 3,000                    |
| 062011                                  | OPERATING SUPPLIES        | -              | -              | -              | -                  | -                        |
| 068008                                  | MATERIALS-STOCK           | 7,500          | 19             | 7,500          | 7,500              | 7,500                    |
| 068010                                  | CAP OUTLAY-STOCK MATERIAL | -              | -              | -              | -                  | -                        |
| 068013                                  | MATERIAL-BILLABLE         | -              | -              | -              | -                  | -                        |
| 068014                                  | MATERIALS-CAPITAL OUTLAY  | 5,000          | -              | 5,000          | 5,000              | 5,000                    |
| 068016                                  | MATERIALS                 | 6,000          | 3,877          | 6,000          | 6,000              | 6,000                    |
| 068030                                  | TOOLS                     | 500            | -              | 500            | 500                | 500                      |
| 074000                                  | MACHINERY AND EQUIPMENT   | 2,500          | -              | 2,500          | 2,500              | 2,500                    |
|   |                           | <b>99,967</b>  | <b>84,592</b>  | <b>99,967</b>  | <b>100,314</b>     | <b>100,314</b>           |
| <b>DISTRIBUTION-HYDRANTS PEASE</b>      |                           |                |                |                |                    |                          |
| <b>50-751-660-63-500-492</b>            |                           |                |                |                |                    |                          |
| 011001                                  | REGULAR SALARIES          | 7,275          | 2,818          | 7,275          | 9,035              | 9,035                    |
| 011058                                  | BILLABLE SALARIES         | -              | -              | -              | -                  | -                        |
| 014041                                  | OVERTIME                  | 7,990          | 1,215          | 7,990          | 7,989              | 7,989                    |
| 014053                                  | O/T-BILLABLE              | -              | -              | -              | -                  | -                        |
| 022001                                  | SOCIAL SECURITY           | 951            | 236            | 951            | 1,056              | 1,056                    |
| 022501                                  | MEDICARE                  | 222            | 55             | 222            | 247                | 247                      |
| 023001                                  | RETIREMENT                | 1,198          | 351            | 1,248          | 1,559              | 1,559                    |
| 043028                                  | MAINTENANCE               | -              | -              | -              | -                  | -                        |
| 068008                                  | MATERIALS-STOCK           | -              | -              | -              | -                  | -                        |
| 068016                                  | MATERIALS                 | 1,000          | 240            | 1,000          | 1,000              | 1,000                    |
|   |                           | <b>18,636</b>  | <b>4,915</b>   | <b>18,686</b>  | <b>20,886</b>      | <b>20,886</b>            |
| <b>DISTRIBUTION-METERS PORTSMOUTH</b>   |                           |                |                |                |                    |                          |
| <b>50-751-660-64-100-492</b>            |                           |                |                |                |                    |                          |
| 011001                                  | REGULAR SALARIES          | 63,349         | 43,295         | 63,349         | 58,728             | 58,728                   |
| 012001                                  | PART TIME SALARIES        | -              | 3,231          | -              | -                  | -                        |
| 014041                                  | OVERTIME                  | 2,578          | 1,058          | 2,578          | 2,397              | 2,397                    |
| 022001                                  | SOCIAL SECURITY           | 2,498          | 2,951          | 2,498          | 3,790              | 3,790                    |
| 022501                                  | MEDICARE                  | 818            | 690            | 818            | 886                | 886                      |
| 023001                                  | RETIREMENT                | 3,892          | 4,192          | 3,892          | 5,599              | 5,599                    |
| 039054                                  | PROF/SERVICES-CONTRACT    | 25,000         | -              | 25,000         | 25,000             | 25,000                   |
| 043018                                  | REPAIRS-EQUIPMENT         | 20,000         | 15,843         | 20,000         | 20,000             | 20,000                   |
| 055050                                  | PRINTING                  | -              | -              | -              | -                  | -                        |
| 062011                                  | OPERATING SUPPLIES        | 1,000          | 343            | 1,000          | 1,000              | 1,000                    |
| 068008                                  | MATERIALS-STOCK           | -              | -              | -              | -                  | -                        |
| 068010                                  | CAP OUTLAY-STOCK MATERIAL | -              | -              | -              | -                  | -                        |
| 068011                                  | BILL CAP OUTLAY STOCK MAT | -              | -              | -              | -                  | -                        |
| 068016                                  | MATERIALS                 | 15,000         | 25,044         | 15,000         | 15,000             | 15,000                   |
| 074000                                  | MACHINERY AND EQUIPMENT   | 5,000          | -              | 5,000          | 5,000              | 5,000                    |
| 086001                                  | DEPRECIATION              | -              | -              | 40,932         | 80,000             | 80,000                   |
|   |                           | <b>139,135</b> | <b>96,649</b>  | <b>180,067</b> | <b>217,400</b>     | <b>217,400</b>           |

|                                  |                           | FY09             | FY09             | FY10             | FY11                  | FY11                        |
|----------------------------------|---------------------------|------------------|------------------|------------------|-----------------------|-----------------------------|
|                                  |                           | BUDGET           | ACTUAL           | BUDGET           | DEPARTMENT<br>REQUEST | CITY MANAGER<br>RECOMMENDED |
| <b>DISTRIBUTION-METERS PEASE</b> |                           |                  |                  |                  |                       |                             |
| <b>50-751-660-64-500-492</b>     |                           |                  |                  |                  |                       |                             |
| 011001                           | REGULAR SALARIES          | 19,550           | -                | 19,550           | 13,553                | 13,553                      |
| 012001                           | PART TIME SALARIES        | -                | -                | -                | -                     | -                           |
| 014041                           | OVERTIME                  | 537              | -                | 537              | 799                   | 799                         |
| 022001                           | SOCIAL SECURITY           | 944              | -                | 944              | 890                   | 890                         |
| 022501                           | MEDICARE                  | 221              | -                | 221              | 208                   | 208                         |
| 023001                           | RETIREMENT                | 1,047            | -                | 1,047            | 1,315                 | 1,315                       |
| 039054                           | PROF/SERVICES-CONTRACT    | 1,500            | -                | 1,500            | 1,500                 | 1,500                       |
| 062011                           | OPERATING SUPPLIES        | 100              | -                | 100              | 100                   | 100                         |
| 068010                           | CAP OUTLAY-STOCK MATERIAL | -                | -                | -                | -                     | -                           |
| 068016                           | MATERIALS                 | 1,000            | 618              | 1,000            | 1,000                 | 1,000                       |
| 074000                           | MACHINERY AND EQUIPMENT   | 1,000            | -                | 1,000            | 1,000                 | 1,000                       |
|                                  |                           | <b>25,899</b>    | <b>618</b>       | <b>25,899</b>    | <b>20,365</b>         | <b>20,365</b>               |
| <hr/>                            |                           |                  |                  |                  |                       |                             |
| <b>TOTAL WATER DIVISION</b>      |                           | <b>5,813,549</b> | <b>4,789,533</b> | <b>6,376,063</b> | <b>6,530,448</b>      | <b>6,530,448</b>            |



# SEWER DIVISION

## MISSION:

The Sewer Division mission is to provide cost-effective, reliable and high-quality wastewater collection and treatment services to its customers. We are committed to operate and maintain our facilities economically and safely while protecting the public health and the environment.

## BUDGET COMMENTS-DEPARTMENT REQUEST:

The FY11 proposed budget is \$8,181,651, which represents a decrease of \$213,918 or 2.5% from the FY10 budget. The operation and maintenance portion of the budget reflects a decrease 1.7% from \$5,615,235 in FY10 to \$5,519,250 proposed for FY11.

The budget reflects a reduction of one position that was shared with the Water Division. The division also increased one-half position due to reallocation of resources from the Water Division. Additional savings is also anticipated through operational changes in the disposal of fats, oils and grease at the Peirce Island Wastewater Treatment Facility.

Capital costs associated with meeting increased regulatory demands continue to drive the sewer rates. Along with increased regulatory demands, the State has eliminated the 30% State Aid Grant program that the City utilized for project funding in the past. The projected loss of revenue for FY11 is approximately \$300,000.

The Wastewater Masterplan will be completed in FY11, which will outline the preferred alternative for bringing the Peirce Island Wastewater Treatment Facility into compliance with secondary treatment standards as well as the potential nutrient removal standards. In addition to planning future treatment system improvements, significant capital upgrades in the collection system will continue including sewer separation projects in the Bartlett Street, State Street and Lincoln Avenue areas.

## BUDGET SUMMARY OF EXPENDITURES:

| SEWER DEPARTMENT                  | FY09<br>BUDGET   | FY09<br>ACTUAL   | FY10<br>BUDGET   | FY11<br>DEPARTMENT<br>REQUEST | FY11<br>CITY MANAGER<br>RECOMMENDED |
|-----------------------------------|------------------|------------------|------------------|-------------------------------|-------------------------------------|
| SALARIES                          | 1,086,581        | 1,099,978        | 1,145,170        | 1,152,777                     | 1,152,777                           |
| PART-TIME SALARIES                | 14,518           | 1,865            | 14,518           | 14,518                        | 14,518                              |
| OVERTIME                          | 93,124           | 106,143          | 96,000           | 113,148                       | 113,148                             |
| HEALTH INSURANCE                  | 372,557          | 272,869          | 353,618          | 341,829                       | 341,829                             |
| DENTAL INSURANCE                  | 25,200           | 22,792           | 24,646           | 24,954                        | 24,954                              |
| LEAVE AT TERMINATION              | 42,000           | 23,575           | 42,000           | 30,000                        | 30,000                              |
| WORKERS' COMPENSATION             | 21,602           | 21,602           | 13,604           | 15,763                        | 15,763                              |
| OTHER FRINGE BENEFITS             | 212,431          | 242,053          | 251,369          | 268,147                       | 268,147                             |
| COLLECTIVE BARGAINING CONTINGENCY | 50,691           | -                | 75,575           | 79,254                        | 79,254                              |
| <i>Contractual Obligations</i>    | 1,918,704        | 1,790,878        | 2,016,500        | 2,040,390                     | 2,040,390                           |
| CHEMICALS                         | 780,600          | 819,301          | 859,000          | 821,000                       | 821,000                             |
| REPAIRS TO EQUIP/BLDGS            | 444,645          | 287,650          | 392,645          | 392,645                       | 392,645                             |
| UTILITIES                         | 746,500          | 650,532          | 746,500          | 676,500                       | 676,500                             |
| ADMINISTRATIVE OVERHEAD           | 450,444          | 450,444          | 457,093          | 457,093                       | 457,093                             |
| SLUDGE/GRIT REMOVAL               | 395,000          | 279,522          | 380,000          | 308,000                       | 308,000                             |
| PROF CONTRACTED SERVICES          | 222,932          | 90,901           | 237,932          | 284,168                       | 284,168                             |
| INTEREST ON DEBT                  | 1,723,625        | 1,248,514        | 1,132,019        | 1,132,783                     | 1,132,783                           |
| DEPRECIATION                      | 1,324,221        | 1,207,550        | 1,389,272        | 1,320,318                     | 1,320,318                           |
| EQUIPMENT                         | 264,043          | 37,019           | 259,043          | 209,300                       | 209,300                             |
| OTHER OPERATING                   | 524,305          | 304,207          | 525,565          | 539,454                       | 539,454                             |
| <i>Other Operating</i>            | 6,876,315        | 5,375,640        | 6,379,069        | 6,141,261                     | 6,141,261                           |
| <b>TOTAL</b>                      | <b>8,795,019</b> | <b>7,166,518</b> | <b>8,395,569</b> | <b>8,181,651</b>              | <b>8,181,651</b>                    |

## SEWER RATE

The Sewer Division uses a two-tier inclining rate block structure similar to the Water Division. Sewer charges are based on water consumption. The first tier rate is assessed for the first 10 units of water consumed per month and the second tier rate is assessed for water consumption over 10 units. This two-tier inclining rate block structure provides an equitable method of financing of wastewater operations.

The sewer rates remained the same in FY09 and FY 10 with \$5.00 per unit for the first 10 units and \$5.50 for all consumption above 10 units. Even as operational costs are reduced, the sewer rate will need to be increased in FY11 to \$5.50 for the first 10 units and \$6.05 for consumption greater than 10 units. These increases are necessary to cover the costs associated with Federal and State regulatory issues requiring significant capital projects. The projects include those projects included in the Consent Decree associated with the Long Term Control Plan sewer separation program. Future capital upgrades associated with required Federal mandates are currently being planned as the City continues with the Wastewater Masterplan.

Proposed Sewer Rate

**One unit of water equals 100 cubic feet or 748 gallons.**

|  | Current<br>FY10 Rate<br>(per unit) | Proposed<br>FY11 Rate<br>(per unit) |
|--|------------------------------------|-------------------------------------|
| First 10 Units of Water<br>Consumption per month | \$5.00                             | \$5.50                              |
| Over 10 Units of Water<br>Consumption per month  | \$5.50                             | \$6.05                              |

**80% of all the residential customers usage is billed at the 10 units or less tier.**

The Table below depicts the monthly assessment for Sewer charges for an average residential customer.

| FY11 Sewer Rate<br>Average Residential Customer (Monthly)<br>Based on 250 gallons per day usage |                      |                |        |
|---|----------------------|----------------|--------|
|   | <u>Current Rates</u> | Proposed Rates | Change |
| Monthly Consumption in units<br>(1 unit = 100 cf = 748 gallons)                                 | 10                   | 10             |        |
| First Tier User Rate  | \$5.00               | \$5.50         | \$0.50 |
| Sewer User Charge   | \$50.00              | \$55.00        | \$5.00 |
| Monthly Sewer Usage Billing   | \$50.00              | \$55.00        | \$5.00 |

## BUDGET SUMMARY –SEWER DIVISION

The Sewer Division prepares its budget using an accrual basis of accounting represented in the first table “Budget Resolution”. The cash requirements/rate model table represents the cash requirements for FY11 and used to calculate the user rate.

### *Budget Resolution (Accrual Basis of Accounting)*

| <b>Budget for Resolution</b>       | <b>FY09 Budget</b> | <b>FY09 Actual</b> | <b>FY10 Budget</b> | <b>Proposed FY11 Budget</b> |
|------------------------------------|--------------------|--------------------|--------------------|-----------------------------|
| Operations and Maintenance         | 5,483,130          | 4,673,435          | 5,615,235          | 5,519,250                   |
| Depreciation                       | 1,324,221          | 1,207,550          | 1,389,272          | 1,320,318                   |
| Interest on Debt                   | 1,723,625          | 1,248,514          | 1,132,019          | 1,132,783                   |
| Equipment and Minor Capital Outlay | 264,043            | 37,019             | 259,043            | 209,300                     |
| <b>Budget Resolution</b>           | <b>8,795,019</b>   | <b>7,166,518</b>   | <b>8,395,569</b>   | <b>8,181,651</b>            |

### *Cash Requirements/Rate Model*

| <b>Adjustment from Budget to Cash Requirements</b> |                    |                    |                    |                             |
|--|--------------------|--------------------|--------------------|-----------------------------|
|  | <b>FY09 Budget</b> | <b>FY09 Actual</b> | <b>FY10 Budget</b> | <b>Proposed FY11 Budget</b> |
| <b>Budget Resolution</b>                           | <b>8,795,019</b>   | <b>7,166,518</b>   | <b>8,395,569</b>   | <b>8,181,651</b>            |
| Capital Projects, Vehicle Replacement              | 1,555,000          | 1,925,286          | 1,218,000          | 1,325,000                   |
| Inventory  | 32,500             | 0                  | 32,500             | 32,500                      |
| Principal Debt                                     | 2,554,724          | 2,531,843          | 2,647,098          | 2,644,598                   |
| less: Accrued Interest                             | (314,958)          | (540,489)          | (10,184)           | (265,050)                   |
| less: Depreciation                                 | (1,324,221)        | (1,207,550)        | (1,389,272)        | (1,320,318)                 |
| less: Stock Materials                              | (27,500)           | (27,500)           | (27,500)           | (27,500)                    |
| less: OPEB Liability                               | 0                  | (20,022)           | 0                  | (20,022)                    |
| <b>Cash Requirements</b>                           | <b>11,270,564</b>  | <b>9,828,086</b>   | <b>10,866,211</b>  | <b>10,550,859</b>           |

| <b>Estimated Revenues for Cash Requirements</b> | <b>FY09 Budget</b> | <b>FY09 Actual</b> | <b>FY10 Budget</b> | <b>Proposed FY11 Budget</b> |
|---|--------------------|--------------------|--------------------|-----------------------------|
| NON-User Fees                                   |                    |                    |                    |                             |
| Fees  | 524,000            | 264,366            | 278,500            | 297,000                     |
| State Aid Grant                                 | 1,701,035          | 1,415,578          | 1,353,279          | 1,264,412                   |
| Pease Payback towards Debt                      | 178,583            | 178,583            | 173,392            | 168,201                     |
| Special Agreements                              | 153,086            | 225,204            | 153,086            | 253,086                     |
| Other Financing Sources                         | 2,715,120          | 0                  | 2,791,550          | 1,865,910                   |
| Subtotal  | 5,271,824          | 2,083,731          | 4,749,807          | 3,848,609                   |
| <b>To be Raised by User Rates</b>               | <b>5,998,740</b>   | <b>7,744,355</b>   | <b>6,116,404</b>   | <b>6,702,250</b>            |
| <b>Total Revenue for Cash Requirements</b>      | <b>11,270,564</b>  | <b>9,828,086</b>   | <b>10,866,211</b>  | <b>10,550,859</b>           |

### *User Rate Revenues*

| <b>Anticipated Billable Units:<br/>(1 unit equals 748 gallons)</b> | <b>Proposed Rates</b> | <b>Units</b> | <b>\$</b>        |
|--|-----------------------|--------------|------------------|
| Billable Units at  | \$5.50                |              |                  |
| Anticipated Revenue  |                       | 545,546      | 3,000,503        |
| Billable Units at  | \$6.05                |              |                  |
| Anticipated Revenue  |                       | 611,859      | 3,701,747        |
| <b>Total Anticipated User Revenues:</b>                            |                       |              | <b>6,702,250</b> |

**CAPITAL PROJECTS:**

The following tables represent capital projects and Rolling Stock equipment identified in Capital Improvement Plan, Appendix II and Rolling Stock Appendix I.

The items in the capital outlay table will be funded through sewer revenues.

| <b>Capital Outlay</b>                               |                  |
|---|------------------|
| <u>Project Name</u>                                 | <u>Amount</u>    |
| Drainage Improvements for X-Country Sewer Lines     | 100,000          |
| Wastewater Treatment Plant Upgrades                 | 500,000          |
| Maplewood Ave Sewer Line                            | 100,000          |
| Long-Term Control Plan - NON SRF Eligible Component | 500,000          |
| Equipment: 4WD Backhoe/Loader-S59; Appendix 1       | 125,000          |
| <b>TOTALS</b>                                       | <b>1,325,000</b> |

The following projects are anticipated to be funded through the State Revolving Loan Fund (SRF) through the State of New Hampshire. The State of New Hampshire offers loans to municipalities for approved Department of Environmental Service projects. If these projects do not receive funding from the SRF program, the Division will seek other financing sources to complete these projects.

| <b>Capital Outlay</b> |                  |
|-----------------------|------------------|
| <u>Project Name</u>   | <u>Amount</u>    |
| LTCP Contract #3A     | 5,250,000        |
| LTCP Cass Street Area | 3,000,000        |
| <b>TOTALS</b>         | <b>8,250,000</b> |

**GOALS AND OBJECTIVES:**

*Goal:* Continue work Wastewater Masterplan.

*Objective:*

- Develop options for bringing Peirce Island Treatment Plant into compliance with secondary permit.
- Develop options for nutrient removal in proposed treatment plant.
- Continue work on update to Combined Sewer Overflow Long Term Control Plan (LTCP).
- Implement interim measures that provide cost-effective water quality improvements at Wastewater discharges.

*Goal:* Continue operations improvement program in both collection and treatment areas.

*Objectives:*

- Continue Development of asset management program incorporating GIS based data platform.
- Use video line inspection program to refine asset management program.
- Implement Fats, Oil and Grease (FOG) reduction measures.

- Conduct equipment upgrades with focus on energy efficiency and decreased energy consumption.
- Continue preventative maintenance program.

*Goal:* Minimize impacts to the City’s waterways from combined sewer overflow.

*Objectives:*

- Continue implementation of Illicit Discharge Detection Elimination
- Implement a series of projects to reduce inflow and infiltration
- Upgrade pump stations and rehabilitate sewers
- Continue implementation of Combined Sewer Overflow Long Term Control Plan (LTCP).
- Complete study on issues for implementing a stormwater enterprise fund to provide for and fund the construction, operation, improvement and maintenance of stormwater facilities.

## PROGRAMS AND SERVICES:

**Wastewater Collection-** Support and maintain infrastructure for residential and commercial wastewater collection services in Portsmouth, including Pease International Tradeport.

- Clean, maintain and repair sewer collection mains (100 miles) and manholes (1,650).
- Install new sewer mains.
- Maintain advanced professional certifications for infrastructure collection operations.

**Wastewater Treatment-** Provide wastewater treatment services, accepting flow from the City, Pease International Tradeport, and additional customers from bordering towns.

- Maintain two wastewater treatment plants (W.W.T.P) and 20 pump stations throughout Portsmouth and Pease.
- Maintain advanced technical professional certifications for operation of facilities.

**Technical Services-** Provide technical services to sewer division.

- Maintain and further develop geographic mapping and information system.
- Prepare maps and plans for information analysis and presentation.
- Analyze and investigate illicit discharges and pursue remediation.
- Prepare technical specifications, drawings, and estimates.
- Review projects in design phase and perform field survey work.
- Perform engineering inspections for sewer construction projects.

## PERFORMANCE MEASURES:

|  | <u>FY 08</u> | <u>FY 09</u> | <u>Estimated<br/>FY 10</u> | <u>Estimated<br/>FY 11</u> |
|--|--------------|--------------|----------------------------|----------------------------|
| Grease related sewer line incidents                    | 15           | 19           | 25                         | 20                         |
| Deer St CSO events                                     | 18           | 11           | 15                         | 12                         |
| Pease WWTP, Kilowatt hours per million gallons treated | 4,905        | 4,357        | 4,265                      | 4,250                      |
| PIWWTP, Kilowatt hours per million gallons treated     | 307          | 276          | 270                        | 265                        |
| Linear Feet of wastewater pipe cleaned and inspected   | 52,800       | 58,363       | 58,000                     | 60,000                     |

| Grade                                  | Job Description   | Name                          | Department Request FY11 | Salary Allocated to Sewer |
|--|---|-------------------------------|-------------------------|---------------------------|
| <b>Sewer Division</b>                  |   |                               |                         |                           |
| <u>Administration</u>                  |   |                               |                         |                           |
| PMA Grade 24 E                         | Deputy PW Director                                      | Allen, David                  | 96,536                  | 48,268                    |
| 1386 Grade 4 F                         | Secretary   | Boucas, Elaine                | 35,539                  | 35,539                    |
| PMA Grade 14 E                         | **Health Inspector                                      | Shaw, Kristin                 | 59,625                  | 35,775                    |
| <b>TOTAL</b>                           |   |                               | <b>191,700</b>          | <b>119,582</b>            |
| <u>Engineering</u>                     |   |                               |                         |                           |
| PMA Grade 21 E                         | Engineer  | Rice, Peter                   | 83,456                  | 41,728                    |
| PMA Grade 15 E                         | GIS Coordinator   | McCarty, James                | 62,402                  | 31,201                    |
|  | *Environmental<br>Planner/Sustainability<br>Coordinator | Britz, Peter                  | 31,200                  | 15,600                    |
| PMA Grade 15 E                         | Coordinator   | Britz, Peter                  | 31,200                  | 15,600                    |
| 1386 Grade 13 10B/2C                   | Eng Tech  | Sheehan, Jared                | 46,582                  | 23,291                    |
| 1386 Grade 8 G                         | CAD Tech  | Siegel, James                 | 44,289                  | 22,145                    |
| 1386 Grade 8 F                         | CAD Tech  | Cote, Svetlana                | 43,104                  | 21,552                    |
| <b>TOTAL</b>                           |   |                               | <b>311,033</b>          | <b>155,517</b>            |
| <u>Treatment</u>                       |   |                               |                         |                           |
| SMA Grade 16 F                         | CPO   | Anania, Paula                 | 67,657                  | 67,657                    |
| SMA Grade 12 6.5E/5.5F                 | ACPO  | Taylor, Eric                  | 54,909                  | 54,909                    |
| SMA Grade 12 E                         | ACPO  | Baker, Michael                | 54,226                  | 54,226                    |
| 1386 Grade 10 3E/9F                    | Plant Oper 2  | Chomas, Roxanna               | 47,153                  | 47,153                    |
| 1386 Grade 10 E                        | Plant Oper 2  | England, John                 | 46,200                  | 46,200                    |
| 1386 Grade 8 C                         | Plant Oper 1  | Vacant                        | 38,099                  | 38,099                    |
| 1386 Grade 8 E                         | Plant Oper 1  | Fallon, Douglas               | 41,956                  | 41,956                    |
| 1386 Grade 8 E                         | Plant Oper 1  | Sanborn, Kathleen             | 41,956                  | 41,956                    |
| 1386 Grade 8 E                         | Plant Oper 1  | Collins, Justin               | 41,956                  | 41,956                    |
| 1386 Grade 8 G                         | Plant Oper 1  | Brescia, Barry                | 44,295                  | 44,295                    |
| 1386 Grade 8 E                         | Plant Oper 1  | Fritz, Paul                   | 41,956                  | 41,956                    |
| 1386 Grade 6 E                         | Truck Driver 1  | McKenzie, Brett               | 38,099                  | 38,099                    |
| 1386 Grade 9 G                         | Lab Tech  | Proposed Position Elimination | 0                       | 0                         |
| <b>TOTAL</b>                           |   |                               | <b>558,462</b>          | <b>558,462</b>            |
| <u>Collection</u>                      |   |                               |                         |                           |
| SMA Grade 15 F                         | Gen Foreman   | Jenkins, Michael              | 64,438                  | 32,219                    |
| SMA Grade 13 F                         | Sewer Foreman   | Adams, John                   | 58,478                  | 58,478                    |
| 1386 Grade 8 F                         | Equip Oper 1  | Gilbert, Jonathon             | 43,109                  | 43,109                    |
| 1386 Grade 7 F                         | Utility Mech  | Sparks, Douglas               | 41,072                  | 41,072                    |
| 1386 Grade 7 G                         | Utility Mech  | Hatch, Craig                  | 42,201                  | 42,201                    |
| 1386 Grade 7 E                         | Utility Mech  | Snyder, Karl                  | 39,972                  | 39,972                    |
| 1386 Grade 6 F                         | W/S Meter Reader  | Kecy, Daniel                  | 39,146                  | 19,573                    |
| 1386 Grade 6 1E/11F                    | W/S Meter Reader  | Desfosses, Lori               | 39,058                  | 19,529                    |
| 1386 Grade 5 E                         | Laborer   | Fate, Donald                  | 36,306                  | 36,306                    |
| <b>TOTAL</b>                           |   |                               | <b>403,780</b>          | <b>332,459</b>            |
| <b>TOTAL FULL TIME</b>                 |   |                               | <b>1,464,975</b>        | <b>1,166,020</b>          |
|  | Laborer   | Summer Laborer                | 5,742                   | 5,742                     |
|  | Eng Tech  | Vacant                        | 8,776                   | 8,776                     |
| <b>TOTAL PART TIME</b>                 |   |                               | <b>14,518</b>           | <b>14,518</b>             |
| <b>EDUCATION STIPEND</b>               |   |                               | <b>1,988</b>            | <b>994</b>                |
| <b>TOTAL SEWER DEPARTMENT SALARIES</b> |   |                               | <b>1,481,481</b>        | <b>1,181,532</b>          |

\*25% FUNDED BY WATER, 25% FUNDED BY SEWER, 20% FUNDED BY THE COAKLEY LANDFILL TRUST AND 30% FUNDED BY THE GENERAL FUND.

\*\*60% FUNDED BY SEWER, 40% FUND BY THE GENERAL FUND HEALTH DEPARTMENT.

|  | FY09   | FY09   | FY10   | FY11                  | FY11                        |
|--|--------|--------|--------|-----------------------|-----------------------------|
|  | BUDGET | ACTUAL | BUDGET | DEPARTMENT<br>REQUEST | CITY MANAGER<br>RECOMMENDED |

**SEWER DEPARTMENT**

**ADMINISTRATION PORTSMOUTH  
51-751-610-51-100-491**

|        |                           |                  |                  |                  |                  |                  |
|--------|---------------------------|------------------|------------------|------------------|------------------|------------------|
| 011001 | REGULAR SALARIES          | 96,994           | 118,883          | 99,102           | 101,645          | 101,645          |
| 011061 | INSURANCE REIMBURSEMENT   | 13,300           | 7,177            | 13,300           | -                | -                |
| 011064 | COLL BARG CONTINGENCY     | 50,691           | -                | 36,862           | 36,862           | 36,862           |
| 011065 | COLL BARG CONTINGENCY     | -                | -                | 38,713           | 42,392           | 42,392           |
| 014041 | OVERTIME                  | 1,017            | 1,736            | 1,500            | 1,262            | 1,262            |
| 015001 | LONGEVITY                 | 5,260            | 6,836            | 6,255            | 6,626            | 6,626            |
| 016001 | LEAVE AT TERMINATION      | 42,000           | 23,575           | 42,000           | 30,000           | 30,000           |
| 021001 | INSURANCE-HEALTH          | 316,673          | 272,869          | 300,575          | 290,555          | 290,555          |
| 021101 | INSURANCE-DENTAL          | 21,420           | 22,792           | 20,949           | 21,211           | 21,211           |
| 021501 | INSURANCE-LIFE            | 2,862            | 2,606            | 2,862            | 1,632            | 1,632            |
| 021601 | INSURANCE-DISABILITY      | 7,751            | 8,561            | 7,751            | 6,460            | 6,460            |
| 021801 | INS CONTRACTUAL STIPEND   | -                | -                | 8,262            | 8,800            | 8,800            |
| 021802 | OPEB LIABILITY            | -                | 20,022           | -                | 20,022           | 20,022           |
| 022001 | SOCIAL SECURITY           | 6,112            | 8,051            | 6,188            | 7,281            | 7,281            |
| 022501 | MEDICARE                  | 1,429            | 1,883            | 1,452            | 1,703            | 1,703            |
| 023001 | RETIREMENT                | 7,921            | 10,968           | 9,628            | 10,757           | 10,757           |
| 026002 | INSURANCE-WORKERS COMP    | 18,362           | 18,362           | 11,563           | 13,399           | 13,399           |
| 030101 | PROF SERVICES-AUDIT       | 7,500            | 7,500            | 7,500            | 7,500            | 7,500            |
| 031002 | PROF SERVICES-ENGINEERING | 5,000            | -                | 5,000            | 5,000            | 5,000            |
| 032001 | PROF SERVICES-O/S COUNSEL | 30,000           | 20,793           | 30,000           | 40,000           | 40,000           |
| 033002 | ADMINISTRATIVE OVERHEAD   | 382,877          | 382,877          | 388,529          | 388,529          | 388,529          |
| 033003 | OVERHEAD APPLIED          | (15,433)         | -                | (15,433)         | -                | -                |
| 034001 | LOCK BOXES                | 30,000           | 16,314           | 30,000           | 24,000           | 24,000           |
| 034103 | TELEPHONE                 | 1,000            | 910              | 1,000            | 1,000            | 1,000            |
| 034201 | OUTSIDE PROGRAMMING       | 4,000            | -                | 4,000            | 4,000            | 4,000            |
| 035004 | OCCUPATIONAL HEALTH       | -                | 429              | 750              | 750              | 750              |
| 039054 | PROF/SERVICES-CONTRACT    | 37,500           | (5,447)          | 37,500           | 37,500           | 37,500           |
| 043024 | REPAIRS-VEHICLE           | 5,000            | 4,541            | 5,000            | 5,000            | 5,000            |
| 043026 | REPAIRS-COMPUTER EQUIP    | -                | -                | -                | -                | -                |
| 043027 | REPAIRS-OFFICE EQUIPMENT  | -                | -                | -                | -                | -                |
| 043028 | MAINTENANCE               | 16,500           | 409              | 16,500           | 24,500           | 24,500           |
| 044001 | RENTAL AND LEASES-POSTAGE | -                | -                | -                | -                | -                |
| 044002 | RENTAL OTHER EQUIPMENT    | -                | -                | -                | -                | -                |
| 048002 | PROPERTY INSURANCE        | 25,320           | 25,320           | 30,003           | 37,191           | 37,191           |
| 053001 | ADVERTISING               | 10,000           | 1,864            | 10,000           | 10,000           | 10,000           |
| 054003 | STATE CERTIFICATION       | 150              | -                | 150              | 150              | 150              |
| 054050 | TRAINING-EDUCATION        | 500              | -                | 500              | 500              | 500              |
| 055050 | PRINTING                  | 1,500            | 1,864            | 1,500            | 1,500            | 1,500            |
| 056001 | DUES PROFESSIONAL ORGANIZ | 500              | -                | 500              | 500              | 500              |
| 057101 | TRAVEL AND CONFERENCE     | 100              | -                | 100              | 100              | 100              |
| 061001 | FIRST AID                 | -                | -                | -                | -                | -                |
| 062001 | OFFICE SUPPLIES           | 2,500            | 849              | 2,500            | 2,500            | 2,500            |
| 062005 | PRINTING SUPPLIES         | 100              | -                | 100              | 100              | 100              |
| 062011 | OPERATING SUPPLIES        | 1,000            | -                | 1,000            | 1,000            | 1,000            |
| 062501 | POSTAGE                   | 7,200            | 1,192            | 7,200            | 7,200            | 7,200            |
| 063501 | GASOLINE                  | 35,000           | 40,170           | 42,000           | 42,000           | 42,000           |
| 063601 | DIESEL FUEL               | -                | -                | -                | -                | -                |
| 067001 | BOOKS & PERIODICALS       | 100              | -                | 100              | 100              | 100              |
| 074000 | MACHINERY AND EQUIPMENT   | 11,500           | 1,902            | 11,500           | 11,500           | 11,500           |
| 081004 | ABATEMENTS                | 8,000            | 11,850           | 8,000            | 8,000            | 8,000            |
| 081031 | FEMA REIMBURSEMENT        | -                | -                | -                | -                | -                |
| 086001 | DEPRECIATION              | 82,248           | 82,248           | 82,248           | 74,023           | 74,023           |
| 098102 | INTEREST-BONDED DEBT      | 1,112,255        | 810,009          | 775,716          | 776,480          | 776,480          |
|        |                           | <b>2,393,709</b> | <b>1,929,916</b> | <b>2,090,425</b> | <b>2,111,230</b> | <b>2,111,230</b> |

**ADMINISTRATION PEASE  
51-751-610-51-500-491**

|        |                           |        |        |        |        |        |
|--------|---------------------------|--------|--------|--------|--------|--------|
| 011001 | REGULAR SALARIES          | 17,117 | -      | 17,117 | 17,937 | 17,937 |
| 011064 | COLL BARG CONTINGENCY     | -      | -      | -      | -      | -      |
| 014041 | OVERTIME                  | 179    | -      | 500    | 223    | 223    |
| 015001 | LONGEVITY                 | 928    | -      | 1,101  | 2,564  | 2,564  |
| 021001 | INSURANCE-HEALTH          | 55,884 | -      | 53,043 | 51,274 | 51,274 |
| 021101 | INSURANCE-DENTAL          | 3,780  | -      | 3,697  | 3,743  | 3,743  |
| 021501 | INSURANCE-LIFE            | 505    | -      | 505    | 288    | 288    |
| 021601 | INSURANCE-DISABILITY      | 1,367  | -      | 1,367  | 1,140  | 1,140  |
| 022001 | SOCIAL SECURITY           | 1,079  | -      | 1,077  | 1,285  | 1,285  |
| 022501 | MEDICARE                  | 252    | -      | 247    | 301    | 301    |
| 023001 | RETIREMENT                | 1,188  | -      | 1,024  | 1,898  | 1,898  |
| 026002 | INSURANCE-WORKERS COMP    | 3,240  | 3,240  | 2,041  | 2,364  | 2,364  |
| 030101 | PROF SERVICES-AUDIT       | 132    | 132    | 132    | 132    | 132    |
| 032001 | PROF SERVICES-O/S COUNSEL | 1,000  | -      | 1,000  | 1,000  | 1,000  |
| 033002 | ADMINISTRATIVE OVERHEAD   | 67,567 | 67,567 | 68,564 | 68,564 | 68,564 |
| 034001 | LOCK BOXES                | 10,000 | -      | 10,000 | 5,000  | 5,000  |
| 034103 | TELEPHONE                 | 100    | -      | 100    | 100    | 100    |
| 034201 | OUTSIDE PROGRAMMING       | 100    | -      | 100    | 100    | 100    |
| 039001 | PROFESSIONAL SERVICES     | 100    | -      | 100    | 100    | 100    |
| 043024 | REPAIRS-VEHICLE           | 275    | -      | 275    | 275    | 275    |
| 043026 | REPAIRS-COMPUTER EQUIP    | 100    | -      | 100    | 100    | 100    |
| 043027 | REPAIRS-OFFICE EQUIPMENT  | 20     | -      | 20     | 20     | 20     |
| 043028 | MAINTENANCE               | 750    | -      | 750    | 2,750  | 2,750  |
| 048002 | PROPERTY INSURANCE        | 4,468  | 4,468  | 5,295  | 6,563  | 6,563  |
| 053001 | ADVERTISING               | 400    | 132    | 400    | 400    | 400    |
| 054003 | STATE CERTIFICATION       | 100    | -      | 100    | 100    | 100    |
| 054050 | TRAINING-EDUCATION        | 50     | -      | 50     | 50     | 50     |
| 055050 | PRINTING                  | 175    | -      | 175    | 175    | 175    |

|                                  | FY09           | FY09           | FY10           | FY11                  | FY11                        |
|----------------------------------|----------------|----------------|----------------|-----------------------|-----------------------------|
|                                  | BUDGET         | ACTUAL         | BUDGET         | DEPARTMENT<br>REQUEST | CITY MANAGER<br>RECOMMENDED |
| 056001 DUES PROFESSIONAL ORGANIZ | 20             | -              | 20             | 20                    | 20                          |
| 057101 TRAVEL AND CONFERENCE     | 20             | -              | 20             | 20                    | 20                          |
| 062001 OFFICE SUPPLIES           | 400            | -              | 400            | 400                   | 400                         |
| 062011 OPERATING SUPPLIES        | 30             | -              | 30             | 30                    | 30                          |
| 062501 POSTAGE                   | 900            | -              | 900            | 900                   | 900                         |
| 063501 GASOLINE                  | 5,000          | -              | 8,000          | 8,000                 | 8,000                       |
| 067001 BOOKS & PERIODICALS       | 10             | -              | 10             | 10                    | 10                          |
| 074000 MACHINERY AND EQUIPMENT   | 300            | -              | 300            | 300                   | 300                         |
| 086001 DEPRECIATION              | 36,778         | 36,778         | 36,778         | 33,100                | 33,100                      |
|                                  | <b>214,314</b> | <b>112,317</b> | <b>215,338</b> | <b>211,226</b>        | <b>211,226</b>              |

**ENGINEERING ADMIN PORTSMOUTH**  
**51-751-610-52-100-491**

|                                  |                |                |                |                |                |
|----------------------------------|----------------|----------------|----------------|----------------|----------------|
| 011001 REGULAR SALARIES          | 107,054        | 100,642        | 110,793        | 133,034        | 133,034        |
| 012001 PART TIME SALARIES        | 5,742          | -              | 5,742          | 7,460          | 7,460          |
| 014041 OVERTIME                  | -              | -              | -              | -              | -              |
| 022001 SOCIAL SECURITY           | 7,108          | 5,708          | 7,057          | 8,711          | 8,711          |
| 022501 MEDICARE                  | 1,662          | 1,335          | 1,606          | 2,097          | 2,097          |
| 023001 RETIREMENT                | 7,416          | 8,819          | 9,353          | 12,869         | 12,869         |
| 031002 PROF SERVICES-ENGINEERING | 10,000         | 11,243         | 10,000         | 46,236         | 46,236         |
| 034103 TELEPHONE                 | 700            | 566            | 700            | 700            | 700            |
| 034104 CELLULAR PHONES           | 1,500          | 567            | 1,500          | 1,500          | 1,500          |
| 039012 CAP OUTLAY-CONTRACT-BILL  | -              | -              | -              | -              | -              |
| 039054 PROF/SERVICES-CONTRACT    | 45,000         | 21,966         | 45,000         | 45,000         | 45,000         |
| 041308 SLUDGE DISPOSAL           | 5,000          | 756            | 5,000          | 5,000          | 5,000          |
| 043028 MAINTENANCE               | 500            | -              | 500            | 500            | 500            |
| 054003 STATE CERTIFICATION       | 250            | -              | 250            | 250            | 250            |
| 054050 TRAINING-EDUCATION        | 1,200          | 1,444          | 1,200          | 1,200          | 1,200          |
| 055003 UPDAING PLATS & MAPS      | 1,000          | -              | 1,000          | 1,000          | 1,000          |
| 056001 DUES PROFESSIONAL ORGANIZ | 600            | 357            | 600            | 600            | 600            |
| 057101 TRAVEL AND CONFERENCE     | 400            | 1,031          | 400            | 400            | 400            |
| 057102 TRAVEL REIMBURSEMENT      | -              | -              | -              | -              | -              |
| 062001 OFFICE SUPPLIES           | 2,000          | 1,069          | 2,000          | 2,000          | 2,000          |
| 062003 MAPPING SUPPLIES          | -              | -              | -              | -              | -              |
| 062005 PRINTING SUPPLIES         | 3,000          | -              | 3,000          | 3,000          | 3,000          |
| 062007 COMPUTER/PRINTER SUPPLIES | 3,000          | 705            | 3,000          | 3,000          | 3,000          |
| 062010 COPYING SUPPLIES          | -              | -              | -              | -              | -              |
| 062011 OPERATING SUPPLIES        | 100            | -              | 100            | 100            | 100            |
| 062501 POSTAGE                   | -              | -              | -              | -              | -              |
| 063501 GASOLINE                  | -              | -              | -              | -              | -              |
| 063601 DIESEL FUEL               | -              | -              | -              | -              | -              |
| 067001 BOOKS & PERIODICALS       | 300            | 439            | 300            | 300            | 300            |
| 074000 MACHINERY AND EQUIPMENT   | 9,000          | 1,000          | 9,000          | 9,000          | 9,000          |
|                                  | <b>212,532</b> | <b>157,645</b> | <b>218,101</b> | <b>283,957</b> | <b>283,957</b> |

**ENGINEERING ADMIN PEASE**  
**51-751-610-52-500-491**

|                                  |               |          |               |               |               |
|----------------------------------|---------------|----------|---------------|---------------|---------------|
| 011001 REGULAR SALARIES          | 18,892        | -        | 18,892        | 23,477        | 23,477        |
| 012001 PART TIME SALARIES        | -             | -        | -             | 1,316         | 1,316         |
| 014041 OVERTIME                  | -             | -        | -             | -             | -             |
| 022001 SOCIAL SECURITY           | 1,192         | -        | 1,155         | 1,553         | 1,553         |
| 022501 MEDICARE                  | 279           | -        | 315           | 363           | 363           |
| 023001 RETIREMENT                | 1,309         | -        | 2,687         | 2,295         | 2,295         |
| 031002 PROF SERVICES-ENGINEERING | 10,000        | -        | 10,000        | 10,000        | 10,000        |
| 034101 PAGERS                    | -             | -        | -             | -             | -             |
| 034103 TELEPHONE                 | 100           | -        | 100           | 100           | 100           |
| 039051 SECURITY/ALARMS           | -             | -        | -             | -             | -             |
| 043018 REPAIRS-EQUIPMENT         | -             | -        | -             | -             | -             |
| 043026 REPAIRS-COMPUTER EQUIP    | -             | -        | -             | -             | -             |
| 043027 REPAIRS-OFFICE EQUIPMENT  | -             | -        | -             | -             | -             |
| 043028 MAINTENANCE               | 20            | -        | 20            | 20            | 20            |
| 044002 RENTAL OTHER EQUIPMENT    | -             | -        | -             | -             | -             |
| 053001 ADVERTISING               | -             | -        | -             | -             | -             |
| 054003 STATE CERTIFICATION       | 10            | -        | 10            | 10            | 10            |
| 054050 TRAINING-EDUCATION        | 150           | -        | 150           | 150           | 150           |
| 055050 PRINTING                  | -             | -        | -             | -             | -             |
| 056001 DUES PROFESSIONAL ORGANIZ | 30            | -        | 30            | 30            | 30            |
| 057101 TRAVEL AND CONFERENCE     | 50            | -        | 50            | 50            | 50            |
| 057102 TRAVEL REIMBURSEMENT      | -             | -        | -             | -             | -             |
| 062001 OFFICE SUPPLIES           | 200           | -        | 200           | 200           | 200           |
| 062003 MAPPING SUPPLIES          | -             | -        | -             | -             | -             |
| 062005 PRINTING SUPPLIES         | -             | -        | -             | -             | -             |
| 062007 COMPUTER/PRINTER SUPPLIES | -             | -        | -             | -             | -             |
| 062010 COPYING SUPPLIES          | -             | -        | -             | -             | -             |
| 062011 OPERATING SUPPLIES        | 30            | -        | 30            | 30            | 30            |
| 062501 POSTAGE                   | -             | -        | -             | -             | -             |
| 067001 BOOKS & PERIODICALS       | 30            | -        | 30            | 30            | 30            |
| 074000 MACHINERY AND EQUIPMENT   | 1,000         | -        | 1,000         | 1,000         | 1,000         |
|                                  | <b>33,292</b> | <b>-</b> | <b>34,669</b> | <b>40,624</b> | <b>40,624</b> |

|                                   | FY09                      | FY09             | FY10             | FY11                  | FY11                        |
|-----------------------------------|---------------------------|------------------|------------------|-----------------------|-----------------------------|
|                                   | BUDGET                    | ACTUAL           | BUDGET           | DEPARTMENT<br>REQUEST | CITY MANAGER<br>RECOMMENDED |
| <b>TREATMENT PLANT PORTSMOUTH</b> |                           |                  |                  |                       |                             |
| <b>51-751-670-54-181-491</b>      |                           |                  |                  |                       |                             |
| 011001                            | REGULAR SALARIES          | 300,221          | 390,673          | 304,375               | 307,154                     |
| 011045                            | SALARIES - SLUDGE REMOVAL | -                | -                | -                     | -                           |
| 011060                            | ON CALL MONITORING        | 14,237           | 12,987           | 14,237                | -                           |
| 012001                            | PART TIME SALARIES        | -                | 939              | -                     | -                           |
| 014041                            | OVERTIME                  | 27,990           | 29,588           | 28,490                | 34,151                      |
| 022001                            | SOCIAL SECURITY           | 21,519           | 25,938           | 21,676                | 22,044                      |
| 022501                            | MEDICARE                  | 5,032            | 6,066            | 5,093                 | 5,155                       |
| 023001                            | RETIREMENT                | 24,419           | 38,078           | 34,700                | 32,568                      |
| 034101                            | PAGERS                    | 600              | 89               | 600                   | 600                         |
| 034103                            | TELEPHONE                 | 8,000            | 6,664            | 8,000                 | 8,000                       |
| 034104                            | CELLULAR PHONES           | 4,500            | 3,828            | 4,500                 | 4,500                       |
| 039001                            | PROFESSIONAL SERVICES     | 20,000           | 1,739            | 20,000                | 20,000                      |
| 039051                            | SECURITY/ALARMS           | 500              | -                | 500                   | 500                         |
| 039054                            | PROF/SERVICES-CONTRACT    | -                | -                | -                     | -                           |
| 041002                            | ELECTRICITY               | 90,000           | 76,108           | 90,000                | 80,000                      |
| 041101                            | NATURAL GAS               | 12,000           | 9,505            | 12,000                | 12,000                      |
| 041102                            | HEATING OIL               | 10,000           | 12,816           | 10,000                | 10,000                      |
| 041103                            | PROPANE GAS               | 2,400            | 111              | 2,400                 | 2,400                       |
| 041205                            | WATER /SEWER FEES         | 40,000           | 46,485           | 40,000                | 40,000                      |
| 041308                            | SLUDGE DISPOSAL           | 245,000          | 198,400          | 245,000               | 220,000                     |
| 041309                            | GRIT AND GREASE REMOVAL   | 62,000           | 22,081           | 62,000                | 15,000                      |
| 043001                            | REPAIRS-STRUCTURAL        | 3,000            | -                | 3,000                 | 3,000                       |
| 043002                            | REPAIRS-ELECTRICAL        | -                | -                | -                     | -                           |
| 043004                            | REPAIRS-PLUMBING          | 5,000            | -                | 5,000                 | 5,000                       |
| 043018                            | REPAIRS-EQUIPMENT         | 60,000           | 85,552           | 75,000                | 75,000                      |
| 043021                            | REPAIRS-FIRE ALARM SYS    | 8,000            | -                | 8,000                 | 8,000                       |
| 043024                            | REPAIRS-VEHICLE           | 17,000           | 31,065           | 17,000                | 17,000                      |
| 043025                            | REPAIRS-BLDINGS & GROUNDS | 25,000           | 6,849            | 10,000                | 10,000                      |
| 043026                            | REPAIRS-COMPUTER EQUIP    | -                | -                | -                     | -                           |
| 043027                            | REPAIRS-OFFICE EQUIPMENT  | -                | -                | -                     | -                           |
| 043028                            | MAINTENANCE               | 16,000           | 13,376           | 16,000                | 16,000                      |
| 043031                            | SCADA EQUIPMENT           | 20,000           | 2,682            | 20,000                | 20,000                      |
| 043032                            | GENERATOR MAINTENANCE     | 2,000            | 3,756            | 2,000                 | 2,000                       |
| 044002                            | RENTAL OTHER EQUIPMENT    | -                | 178              | -                     | -                           |
| 053001                            | ADVERTISING               | -                | -                | -                     | -                           |
| 054003                            | STATE CERTIFICATION       | 1,000            | 470              | 1,000                 | 1,000                       |
| 054050                            | TRAINING-EDUCATION        | 6,000            | 1,752            | 6,000                 | 6,000                       |
| 056001                            | DUES PROFESSIONAL ORGANIZ | 1,000            | 663              | 1,000                 | 1,000                       |
| 056007                            | OPERATIONAL PERMITS       | -                | -                | -                     | -                           |
| 057101                            | TRAVEL AND CONFERENCE     | 1,000            | -                | 1,000                 | 1,000                       |
| 057102                            | TRAVEL REIMBURSEMENT      | 2,500            | 1,251            | 2,500                 | 2,500                       |
| 061001                            | FIRST AID                 | 1,000            | 126              | 1,000                 | 1,000                       |
| 062001                            | OFFICE SUPPLIES           | 2,000            | 1,598            | 2,000                 | 2,000                       |
| 062011                            | OPERATING SUPPLIES        | 21,000           | 6,303            | 16,000                | 16,000                      |
| 063800                            | MATERIALS-CHEMICALS       | 725,000          | 762,900          | 798,000               | 750,000                     |
| 066001                            | VEHICLE REPAIRS           | -                | -                | -                     | -                           |
| 067001                            | BOOKS & PERIODICALS       | -                | -                | -                     | -                           |
| 068001                            | CLOTHING ALLOWANCE        | -                | -                | -                     | -                           |
| 068002                            | CLOTHING                  | 6,500            | 5,444            | 6,500                 | 6,500                       |
| 068003                            | PROTECTIVE CLOTHING       | 2,500            | 1,744            | 2,500                 | 2,500                       |
| 068030                            | TOOLS                     | 6,000            | 4,349            | 6,000                 | 6,000                       |
| 074000                            | MACHINERY AND EQUIPMENT   | 55,000           | 3,577            | 55,000                | 40,000                      |
| 086001                            | DEPRECIATION              | 356,774          | 356,774          | 356,774               | 361,774                     |
| 098102                            | INTEREST-BONDED DEBT      | 388,537          | 266,310          | 198,458               | 198,458                     |
|                                   | <b>2,620,229</b>          | <b>2,438,815</b> | <b>2,513,303</b> | <b>2,365,804</b>      | <b>2,365,804</b>            |

|                              |                           |         |         |         |         |
|------------------------------|---------------------------|---------|---------|---------|---------|
| <b>TREATMENT PLANT PEASE</b> |                           |         |         |         |         |
| <b>51-751-670-54-581-491</b> |                           |         |         |         |         |
| 011001                       | REGULAR SALARIES          | 130,984 | 93,132  | 130,984 | 128,446 |
| 011045                       | SALARIES - SLUDGE REMOVAL | -       | -       | -       | -       |
| 011060                       | ON CALL MONITORING        | -       | -       | -       | -       |
| 012001                       | PART TIME SALARIES        | -       | -       | -       | -       |
| 014041                       | OVERTIME                  | 20,823  | 22,117  | 20,828  | 24,759  |
| 018031                       | CERTIFICATION STIPEND     | -       | -       | -       | -       |
| 022001                       | SOCIAL SECURITY           | 9,536   | 6,943   | 9,536   | 9,499   |
| 022501                       | MEDICARE                  | 2,230   | 1,624   | 2,230   | 2,221   |
| 023001                       | RETIREMENT                | 10,877  | 10,094  | 13,377  | 14,034  |
| 031002                       | PROF SERVICES-ENGINEERING | -       | -       | 15,000  | 15,000  |
| 034101                       | PAGERS                    | 300     | -       | 300     | 300     |
| 034103                       | TELEPHONE                 | 2,000   | 3,259   | 2,000   | 2,000   |
| 039051                       | SECURITY/ALARMS           | -       | -       | -       | -       |
| 039054                       | PROF/SERVICES-CONTRACT    | -       | -       | -       | -       |
| 041002                       | ELECTRICITY               | 160,000 | 122,483 | 150,000 | 150,000 |
| 041101                       | NATURAL GAS               | 18,000  | 14,110  | 18,000  | 18,000  |
| 041102                       | HEATING OIL               | -       | -       | -       | -       |
| 041103                       | PROPANE GAS               | -       | 453     | -       | -       |
| 041205                       | WATER /SEWER FEES         | 6,000   | 16,259  | 6,000   | 6,000   |
| 041301                       | RUBBISH REMOVAL           | 1,000   | 697     | 1,000   | 1,000   |
| 041308                       | SLUDGE DISPOSAL           | 75,000  | 57,635  | 60,000  | 60,000  |
| 043002                       | REPAIRS-ELECTRICAL        | 500     | -       | 500     | 500     |
| 043018                       | REPAIRS-EQUIPMENT         | 100,000 | 49,385  | 75,000  | 75,000  |
| 043024                       | REPAIRS-VEHICLE           | -       | -       | -       | -       |
| 043025                       | REPAIRS-BLDINGS & GROUNDS | 20,000  | 11,064  | 20,000  | 20,000  |
| 043026                       | REPAIRS-COMPUTER EQUIP    | -       | -       | -       | -       |
| 043027                       | REPAIRS-OFFICE EQUIPMENT  | -       | -       | -       | -       |
| 043028                       | MAINTENANCE               | 20,000  | 6,523   | 20,000  | 20,000  |
| 043031                       | SCADA EQUIPMENT           | 20,000  | 4,378   | 20,000  | 20,000  |

|        | FY09                       | FY09             | FY10           | FY11                  | FY11                        |
|--------|----------------------------|------------------|----------------|-----------------------|-----------------------------|
|        | BUDGET                     | ACTUAL           | BUDGET         | DEPARTMENT<br>REQUEST | CITY MANAGER<br>RECOMMENDED |
| 043032 | GENERATOR MAINTENANCE      | 1,000            | 2,542          | 1,000                 | 1,000                       |
| 044002 | RENTAL OTHER EQUIPMENT     | 19,000           | 18,645         | 19,000                | 10,000                      |
| 048002 | PROPERTY INSURANCE         | -                | -              | -                     | -                           |
| 053001 | ADVERTISING                | -                | -              | -                     | -                           |
| 054003 | STATE CERTIFICATION        | -                | 50             | -                     | -                           |
| 054050 | TRAINING-EDUCATION         | 500              | 270            | 500                   | 500                         |
| 055050 | PRINTING                   | -                | -              | -                     | -                           |
| 056001 | DUES PROFESSIONAL ORGANIZ  | 200              | -              | 200                   | 200                         |
| 056007 | OPERATIONAL PERMITS        | -                | -              | -                     | -                           |
| 057102 | TRAVEL REIMBURSEMENT       | -                | -              | -                     | -                           |
| 061001 | FIRST AID                  | 350              | 107            | 350                   | 350                         |
| 062001 | OFFICE SUPPLIES            | 1,200            | 896            | 1,200                 | 1,200                       |
| 062005 | PRINTING SUPPLIES          | -                | -              | -                     | -                           |
| 062011 | OPERATING SUPPLIES         | 6,000            | 2,897          | 6,000                 | 6,000                       |
| 063501 | GASOLINE                   | -                | -              | -                     | -                           |
| 063601 | DIESEL FUEL                | 600              | 242            | 600                   | 600                         |
| 063800 | MATERIALS-CHEMICALS        | 55,000           | 56,401         | 60,000                | 70,000                      |
| 067001 | BOOKS & PERIODICALS        | -                | -              | -                     | -                           |
| 068001 | CLOTHING ALLOWANCE         | -                | -              | -                     | -                           |
| 068002 | CLOTHING                   | 1,000            | 314            | 1,000                 | 1,000                       |
| 068003 | PROTECTIVE CLOTHING        | 1,000            | 359            | 1,000                 | 1,000                       |
| 068030 | TOOLS                      | 2,000            | 1,154          | 2,000                 | 2,000                       |
| 073000 | OTHER IMPROVEMENTS         | 25,000           | -              | 25,000                | 25,000                      |
| 074000 | MACHINERY AND EQUIPMENT    | 25,000           | 8,864          | 25,000                | 25,000                      |
| 086001 | DEPRECIATION               | 228,778          | 228,778        | 228,778               | 228,778                     |
| 098102 | INTEREST-BONDED DEBT       | 110,263          | 86,097         | 77,344                | 77,344                      |
| 098104 | INTEREST ON BOND, FROM PDA | 112,570          | 86,097         | 80,501                | 80,501                      |
|        |                            | <b>1,186,711</b> | <b>913,870</b> | <b>1,094,228</b>      | <b>1,097,232</b>            |

**LABORATORY PORTSMOUTH**  
51-751-670-55-181-491

|        |                           |               |               |               |               |
|--------|---------------------------|---------------|---------------|---------------|---------------|
| 011001 | REGULAR SALARIES          | 14,237        | 25,733        | 14,237        | 16,754        |
| 014041 | OVERTIME                  | -             | 4,451         | -             | 854           |
| 022001 | SOCIAL SECURITY           | 896           | 1,816         | 827           | 1,092         |
| 022501 | MEDICARE                  | 210           | 425           | 210           | 255           |
| 023001 | RETIREMENT                | 984           | 2,651         | 984           | 1,613         |
| 039010 | PROF/SERVICES-LAB TESTS   | 20,000        | 5,105         | 20,000        | 20,000        |
| 039054 | PROF/SERVICES-CONTRACT    | -             | -             | -             | -             |
| 043001 | REPAIRS-STRUCTURAL        | 3,500         | -             | 3,500         | 3,500         |
| 043018 | REPAIRS-EQUIPMENT         | 2,000         | -             | 2,000         | 2,000         |
| 043028 | MAINTENANCE               | 1,500         | -             | 1,500         | 1,500         |
| 054050 | TRAINING-EDUCATION        | 50            | -             | 50            | 50            |
| 056001 | DUES PROFESSIONAL ORGANIZ | -             | -             | -             | -             |
| 056007 | OPERATIONAL PERMITS       | -             | -             | -             | -             |
| 057102 | TRAVEL REIMBURSEMENT      | -             | -             | -             | -             |
| 062001 | OFFICE SUPPLIES           | 600           | -             | 600           | 600           |
| 062011 | OPERATING SUPPLIES        | 15,000        | 14,758        | 15,000        | 15,000        |
| 067001 | BOOKS & PERIODICALS       | -             | -             | -             | -             |
| 068001 | CLOTHING ALLOWANCE        | -             | -             | -             | -             |
| 068002 | CLOTHING                  | -             | -             | -             | -             |
| 074000 | MACHINERY AND EQUIPMENT   | 7,000         | 1,761         | 7,000         | 7,000         |
| 075000 | FURNITURE AND FIXTURES    | 10,000        | -             | 10,000        | 5,000         |
|        |                           | <b>75,977</b> | <b>56,700</b> | <b>75,908</b> | <b>75,218</b> |

**LABORATORY PEASE**  
51-751-670-55-581-491

|        |                           |               |               |               |               |
|--------|---------------------------|---------------|---------------|---------------|---------------|
| 011001 | REGULAR SALARIES          | 5,695         | 800           | 5,695         | 5,585         |
| 014041 | OVERTIME                  | -             | 441           | -             | 854           |
| 022001 | SOCIAL SECURITY           | 358           | 76            | 358           | 399           |
| 022501 | MEDICARE                  | 84            | 18            | 84            | 93            |
| 023001 | RETIREMENT                | 394           | 109           | 394           | 590           |
| 039010 | PROF/SERVICES-LAB TESTS   | 20,000        | 16,945        | 20,000        | 20,000        |
| 043018 | REPAIRS-EQUIPMENT         | 2,000         | 199           | 2,000         | 2,000         |
| 043028 | MAINTENANCE               | 1,000         | 1,485         | 1,000         | 1,000         |
| 053001 | ADVERTISING               | -             | -             | -             | -             |
| 054050 | TRAINING-EDUCATION        | -             | -             | -             | -             |
| 056001 | DUES PROFESSIONAL ORGANIZ | -             | -             | -             | -             |
| 056007 | OPERATIONAL PERMITS       | -             | -             | -             | -             |
| 057102 | TRAVEL REIMBURSEMENT      | -             | -             | -             | -             |
| 062011 | OPERATING SUPPLIES        | 25,000        | 19,417        | 25,000        | 25,000        |
| 062501 | POSTAGE                   | -             | -             | -             | -             |
| 067001 | BOOKS & PERIODICALS       | -             | -             | -             | -             |
| 068001 | CLOTHING ALLOWANCE        | -             | -             | -             | -             |
| 068002 | CLOTHING                  | -             | -             | -             | -             |
| 068003 | PROTECTIVE CLOTHING       | -             | -             | -             | -             |
| 068016 | MATERIALS                 | -             | -             | -             | -             |
| 068030 | TOOLS                     | -             | -             | -             | -             |
| 074000 | MACHINERY AND EQUIPMENT   | 20,000        | 4,857         | 20,000        | 5,000         |
|        |                           | <b>74,531</b> | <b>44,346</b> | <b>74,531</b> | <b>60,521</b> |

**LIFT STATIONS PORTSMOUTH**  
51-751-670-51-141-491

|        |                      |        |        |        |        |
|--------|----------------------|--------|--------|--------|--------|
| 011001 | REGULAR SALARIES     | 68,339 | 55,046 | 68,339 | 67,015 |
| 011056 | CAPITAL OUTLAY-LABOR | -      | -      | -      | -      |
| 012001 | PART TIME SALARIES   | -      | -      | -      | -      |
| 014041 | OVERTIME             | 19,012 | 24,914 | 14,512 | 17,076 |
| 022001 | SOCIAL SECURITY      | 5,481  | 4,728  | 4,981  | 5,214  |

|        | FY09                      | FY09           | FY10           | FY11                  | FY11                        |        |
|--------|---------------------------|----------------|----------------|-----------------------|-----------------------------|--------|
|        | BUDGET                    | ACTUAL         | BUDGET         | DEPARTMENT<br>REQUEST | CITY MANAGER<br>RECOMMENDED |        |
| 022501 | MEDICARE                  | 1,282          | 1,106          | 1,082                 | 1,219                       | 1,219  |
| 023001 | RETIREMENT                | 6,387          | 7,006          | 6,182                 | 7,703                       | 7,703  |
| 031003 | PROF SERVICES-SCADA       | 20,000         | 9,873          | 20,000                | 20,000                      | 20,000 |
| 034103 | TELEPHONE                 | 600            | 540            | 600                   | 600                         | 600    |
| 039051 | SECURITY/ALARMS           | -              | 40             | -                     | -                           | -      |
| 041002 | ELECTRICITY               | 100,000        | 57,109         | 100,000               | 90,000                      | 90,000 |
| 041101 | NATURAL GAS               | 9,000          | 9,485          | 9,000                 | 9,000                       | 9,000  |
| 041102 | HEATING OIL               | 100            | -              | 100                   | 100                         | 100    |
| 041205 | WATER /SEWER FEES         | 3,000          | 4,861          | 3,000                 | 3,000                       | 3,000  |
| 041309 | GRIT AND GREASE REMOVAL   | 8,000          | 650            | 8,000                 | 8,000                       | 8,000  |
| 043001 | REPAIRS-STRUCTURAL        | -              | -              | -                     | -                           | -      |
| 043002 | REPAIRS-ELECTRICAL        | -              | -              | -                     | -                           | -      |
| 043018 | REPAIRS-EQUIPMENT         | 50,000         | 36,170         | 50,000                | 50,000                      | 50,000 |
| 043025 | REPAIRS-BLDINGS & GROUNDS | 25,000         | 5,409          | 25,000                | 25,000                      | 25,000 |
| 043028 | MAINTENANCE               | 6,000          | 2,564          | 6,000                 | 6,000                       | 6,000  |
| 043031 | SCADA EQUIPMENT           | -              | -              | -                     | -                           | -      |
| 043032 | GENERATOR MAINTENANCE     | 18,000         | 14,179         | 18,000                | 18,000                      | 18,000 |
| 044002 | RENTAL OTHER EQUIPMENT    | -              | -              | -                     | -                           | -      |
| 056007 | OPERATIONAL PERMITS       | -              | -              | -                     | -                           | -      |
| 062011 | OPERATING SUPPLIES        | 10,000         | 1,529          | 10,000                | 10,000                      | 10,000 |
| 063800 | MATERIALS-CHEMICALS       | -              | -              | -                     | -                           | -      |
| 074000 | MACHINERY AND EQUIPMENT   | 50,000         | 13,747         | 50,000                | 50,000                      | 50,000 |
| 086001 | DEPRECIATION              | 73,314         | 63,314         | 73,314                | 56,983                      | 56,983 |
|        | <b>473,515</b>            | <b>312,267</b> | <b>468,110</b> | <b>444,910</b>        | <b>444,910</b>              |        |

**LIFT STATION MECHANIC STREET  
51-751-670-65-142-492**

|        |                           |                |                |                |                |         |
|--------|---------------------------|----------------|----------------|----------------|----------------|---------|
| 011001 | REGULAR SALARIES          | 5,695          | -              | 6,584          | 3,215          | 3,215   |
| 014041 | OVERTIME                  | 1,509          | -              | 1,509          | 1,708          | 1,708   |
| 022001 | SOCIAL SECURITY           | 452            | -              | 465            | 305            | 305     |
| 022501 | MEDICARE                  | 105            | -              | 105            | 71             | 71      |
| 023001 | RETIREMENT                | 526            | -              | 526            | 451            | 451     |
| 039051 | SECURITY/ALARMS           | -              | -              | -              | -              | -       |
| 039054 | PROF/SERVICES-CONTRACT    | 5,000          | -              | 5,000          | 5,000          | 5,000   |
| 041002 | ELECTRICITY               | 150,000        | 149,977        | 150,000        | 100,000        | 100,000 |
| 041101 | NATURAL GAS               | 8,500          | 5,978          | 8,500          | 8,500          | 8,500   |
| 041102 | HEATING OIL               | -              | -              | -              | -              | -       |
| 041205 | WATER /SEWER FEES         | -              | -              | -              | -              | -       |
| 043001 | REPAIRS-STRUCTURAL        | -              | -              | -              | -              | -       |
| 043002 | REPAIRS-ELECTRICAL        | -              | -              | -              | -              | -       |
| 043018 | REPAIRS-EQUIPMENT         | 50,000         | (1,138)        | 25,000         | 25,000         | 25,000  |
| 043025 | REPAIRS-BLDINGS & GROUNDS | 12,000         | 27             | 12,000         | 12,000         | 12,000  |
| 043028 | MAINTENANCE               | 5,000          | 6,050          | 5,000          | 5,000          | 5,000   |
| 043031 | SCADA EQUIPMENT           | 2,500          | -              | 2,500          | 2,500          | 2,500   |
| 043032 | GENERATOR MAINTENANCE     | 5,000          | 8,169          | 5,000          | 5,000          | 5,000   |
| 056007 | OPERATIONAL PERMITS       | -              | -              | -              | -              | -       |
| 062011 | OPERATING SUPPLIES        | 4,000          | 2,716          | 4,000          | 4,000          | 4,000   |
| 063800 | MATERIALS-CHEMICALS       | 600            | -              | 1,000          | 1,000          | 1,000   |
| 073000 | OTHER IMPROVEMENTS        | 15,000         | -              | 10,000         | 10,000         | 10,000  |
| 074000 | MACHINERY AND EQUIPMENT   | 7,500          | -              | 7,500          | 7,500          | 7,500   |
| 086001 | DEPRECIATION              | 98,553         | 68,991         | 140,737        | 155,901        | 155,901 |
|        | <b>371,940</b>            | <b>240,770</b> | <b>385,426</b> | <b>347,151</b> | <b>347,151</b> |         |

**LIFT STATION DEER STREET  
51-751-670-65-143-491**

|        |                           |                |                |                |                |        |
|--------|---------------------------|----------------|----------------|----------------|----------------|--------|
| 011001 | REGULAR SALARIES          | 5,695          | -              | 5,695          | 2,854          | 2,854  |
| 014041 | OVERTIME                  | 1,059          | -              | 1,059          | 854            | 854    |
| 022001 | SOCIAL SECURITY           | 452            | -              | 452            | 230            | 230    |
| 022501 | MEDICARE                  | 106            | -              | 196            | 54             | 54     |
| 023001 | RETIREMENT                | 526            | -              | 526            | 340            | 340    |
| 034103 | TELEPHONE                 | -              | -              | -              | -              | -      |
| 039051 | SECURITY/ALARMS           | -              | -              | -              | -              | -      |
| 039054 | PROF/SERVICES-CONTRACT    | 300            | -              | 300            | 300            | 300    |
| 039056 | CSO MONITORING            | 1,000          | -              | 1,000          | 1,000          | 1,000  |
| 041002 | ELECTRICITY               | 60,000         | 59,378         | 60,000         | 60,000         | 60,000 |
| 041101 | NATURAL GAS               | -              | -              | -              | -              | -      |
| 041102 | HEATING OIL               | -              | -              | -              | -              | -      |
| 041205 | WATER /SEWER FEES         | -              | -              | -              | -              | -      |
| 043001 | REPAIRS-STRUCTURAL        | -              | -              | -              | -              | -      |
| 043002 | REPAIRS-ELECTRICAL        | -              | -              | -              | -              | -      |
| 043018 | REPAIRS-EQUIPMENT         | 15,000         | 704            | 15,000         | 15,000         | 15,000 |
| 043025 | REPAIRS-BLDINGS & GROUNDS | 2,000          | 63             | 2,000          | 2,000          | 2,000  |
| 043028 | MAINTENANCE               | 5,000          | 31             | 5,000          | 5,000          | 5,000  |
| 043031 | SCADA EQUIPMENT           | 2,500          | -              | 2,500          | 2,500          | 2,500  |
| 043032 | GENERATOR MAINTENANCE     | 600            | 300            | 600            | 600            | 600    |
| 044002 | RENTAL OTHER EQUIPMENT    | -              | -              | -              | -              | -      |
| 062001 | OFFICE SUPPLIES           | -              | -              | -              | -              | -      |
| 062011 | OPERATING SUPPLIES        | 2,000          | 848            | 2,000          | 2,000          | 2,000  |
| 063601 | DIESEL FUEL               | 4,000          | -              | 4,000          | 4,000          | 4,000  |
| 063800 | MATERIALS-CHEMICALS       | -              | -              | -              | -              | -      |
| 074000 | MACHINERY AND EQUIPMENT   | -              | -              | -              | -              | -      |
| 086001 | DEPRECIATION              | 85,645         | 78,211         | 85,645         | 85,645         | 85,645 |
|        | <b>185,883</b>            | <b>139,536</b> | <b>185,973</b> | <b>182,377</b> | <b>182,377</b> |        |

**LIFT STATIONS PEASE  
51-751-670-65-541-491**

|        |                  |        |   |        |        |        |
|--------|------------------|--------|---|--------|--------|--------|
| 011001 | REGULAR SALARIES | 22,780 | - | 22,780 | 13,202 | 13,202 |
|--------|------------------|--------|---|--------|--------|--------|

|                                | FY09          | FY09          | FY10          | FY11                  | FY11                        |
|--------------------------------|---------------|---------------|---------------|-----------------------|-----------------------------|
|                                | BUDGET        | ACTUAL        | BUDGET        | DEPARTMENT<br>REQUEST | CITY MANAGER<br>RECOMMENDED |
| 014041 OVERTIME                | 4,602         | -             | 4,602         | 5,123                 | 5,123                       |
| 022001 SOCIAL SECURITY         | 1,719         | -             | 1,719         | 1,136                 | 1,136                       |
| 022501 MEDICARE                | 402           | -             | 359           | 266                   | 266                         |
| 023001 RETIREMENT              | 1,977         | -             | 1,977         | 1,679                 | 1,679                       |
| 031003 PROF SERVICES-SCADA     | -             | -             | -             | -                     | -                           |
| 039051 SECURITY/ALARMS         | -             | -             | -             | -                     | -                           |
| 041002 ELECTRICITY             | 5,000         | 3,162         | 5,000         | 5,000                 | 5,000                       |
| 041101 NATURAL GAS             | 3,000         | 879           | 3,000         | 3,000                 | 3,000                       |
| 041102 HEATING OIL             | -             | -             | -             | -                     | -                           |
| 041205 WATER /SEWER FEES       | -             | 1,149         | -             | -                     | -                           |
| 043001 REPAIRS-STRUCTURAL      | -             | -             | -             | -                     | -                           |
| 043002 REPAIRS-ELECTRICAL      | -             | -             | -             | -                     | -                           |
| 043018 REPAIRS-EQUIPMENT       | 5,000         | -             | 5,000         | 5,000                 | 5,000                       |
| 043028 MAINTENANCE             | 1,000         | 218           | 1,000         | 1,000                 | 1,000                       |
| 043032 GENERATOR MAINTENANCE   | -             | -             | -             | -                     | -                           |
| 062011 OPERATING SUPPLIES      | 500           | -             | 500           | 500                   | 500                         |
| 063800 MATERIALS-CHEMICALS     | -             | -             | -             | -                     | -                           |
| 074000 MACHINERY AND EQUIPMENT | -             | -             | -             | -                     | -                           |
| 086001 DEPRECIATION            | 11,967        | 11,967        | 11,967        | 11,967                | 11,967                      |
|                                | <b>57,947</b> | <b>17,375</b> | <b>57,904</b> | <b>47,873</b>         | <b>47,873</b>               |

**COLLECTION ADMINISTRATION PORTSMOUTH  
51-751-680-51-100-491**

|                                  |                |                |                |                |                |
|----------------------------------|----------------|----------------|----------------|----------------|----------------|
| 011001 REGULAR SALARIES          | 139,321        | 159,897        | 168,858        | 178,840        | 178,840        |
| 011056 CAPITAL OUTLAY-LABOR      | -              | -              | -              | -              | -              |
| 012001 PART TIME SALARIES        | 8,776          | 481            | 8,776          | 4,881          | 4,881          |
| 014041 OVERTIME                  | 8,467          | 6,422          | 10,945         | 14,140         | 14,140         |
| 022001 SOCIAL SECURITY           | 9,707          | 10,002         | 11,573         | 12,267         | 12,267         |
| 022501 MEDICARE                  | 2,270          | 2,339          | 3,036          | 2,869          | 2,869          |
| 023001 RETIREMENT                | 13,684         | 14,721         | 18,853         | 18,124         | 18,124         |
| 034103 TELEPHONE                 | 1,500          | 1,342          | 1,500          | 1,500          | 1,500          |
| 034104 CELLULAR PHONES           | 3,000          | 1,309          | 3,000          | 3,000          | 3,000          |
| 039051 SECURITY/ALARMS           | -              | -              | -              | -              | -              |
| 039054 PROF/SERVICES-CONTRACT    | 1,000          | 106            | 1,000          | 1,000          | 1,000          |
| 039055 PROF/SERV-CONTRACT-BILLAB | -              | -              | -              | -              | -              |
| 041101 NATURAL GAS               | -              | -              | -              | -              | -              |
| 041305 HOUSEHOLD HAZARDOUS WASTE | 15,000         | 12,657         | 15,000         | 15,000         | 15,000         |
| 043018 REPAIRS-EQUIPMENT         | 5,000          | 5,869          | 5,000          | 5,000          | 5,000          |
| 043024 REPAIRS-VEHICLE           | 28,000         | 51,806         | 26,000         | 26,000         | 26,000         |
| 043025 REPAIRS-BLDINGS & GROUNDS | 500            | 4              | 500            | 500            | 500            |
| 043027 REPAIRS-OFFICE EQUIPMENT  | -              | 80             | -              | -              | -              |
| 043028 MAINTENANCE               | 500            | 660            | 500            | 500            | 500            |
| 044002 RENTAL OTHER EQUIPMENT    | -              | -              | -              | -              | -              |
| 054003 STATE CERTIFICATION       | -              | -              | -              | -              | -              |
| 054050 TRAINING-EDUCATION        | 300            | 665            | 300            | 300            | 300            |
| 055050 PRINTING                  | -              | -              | -              | -              | -              |
| 056001 DUES PROFESSIONAL ORGANIZ | -              | -              | -              | -              | -              |
| 061001 FIRST AID                 | 180            | 467            | 180            | 180            | 180            |
| 062001 OFFICE SUPPLIES           | 300            | 16             | 300            | 300            | 300            |
| 062011 OPERATING SUPPLIES        | 1,000          | 632            | 1,000          | 1,000          | 1,000          |
| 065051 GROUNDSKEEPING-DIG SAFE   | 2,800          | -              | 2,800          | 2,800          | 2,800          |
| 067001 BOOKS & PERIODICALS       | 500            | -              | 500            | 500            | 500            |
| 068002 CLOTHING                  | 2,500          | 276            | 2,500          | 2,500          | 2,500          |
| 068003 PROTECTIVE CLOTHING       | 500            | 150            | 500            | 500            | 500            |
| 068008 MATERIALS-STOCK           | -              | -              | -              | -              | -              |
| 068012 STOCK INVENTORY           | -              | 6,563          | -              | -              | -              |
| 068030 TOOLS                     | 6,000          | 2,606          | 6,000          | 6,000          | 6,000          |
| 074000 MACHINERY AND EQUIPMENT   | 7,500          | 1,311          | 7,500          | 7,500          | 7,500          |
| 086001 DEPRECIATION              | 350,164        | 280,488        | 373,031        | 312,147        | 312,147        |
|                                  | <b>608,469</b> | <b>560,868</b> | <b>669,152</b> | <b>617,348</b> | <b>617,348</b> |

**COLLECTION ADMINISTRATION PEASE  
51-751-680-51-500-491**

|                                  |               |          |               |               |               |
|----------------------------------|---------------|----------|---------------|---------------|---------------|
| 011001 REGULAR SALARIES          | 22,291        | -        | 34,291        | 36,318        | 36,318        |
| 012001 PART TIME SALARIES        | -             | -        | -             | 861           | 861           |
| 014041 OVERTIME                  | 1,355         | -        | 3,655         | 2,871         | 2,871         |
| 018031 CERTIFICATION STIPEND     | -             | -        | -             | -             | -             |
| 022001 SOCIAL SECURITY           | 1,491         | -        | 2,272         | 2,483         | 2,483         |
| 022501 MEDICARE                  | 349           | -        | 439           | 581           | 581           |
| 023001 RETIREMENT                | 1,664         | -        | 2,442         | 3,669         | 3,669         |
| 039054 PROF/SERVICES-CONTRACT    | -             | -        | -             | -             | -             |
| 041101 NATURAL GAS               | -             | -        | -             | -             | -             |
| 043018 REPAIRS-EQUIPMENT         | 200           | -        | 200           | 200           | 200           |
| 043025 REPAIRS-BLDINGS & GROUNDS | 50            | -        | 50            | 50            | 50            |
| 054003 STATE CERTIFICATION       | 25            | -        | 25            | 25            | 25            |
| 054050 TRAINING-EDUCATION        | 75            | -        | 75            | 75            | 75            |
| 055050 PRINTING                  | 50            | -        | 50            | 50            | 50            |
| 056001 DUES PROFESSIONAL ORGANIZ | 25            | -        | 25            | 25            | 25            |
| 061001 FIRST AID                 | 20            | -        | 20            | 20            | 20            |
| 062001 OFFICE SUPPLIES           | 50            | -        | 50            | 50            | 50            |
| 062011 OPERATING SUPPLIES        | 400           | -        | 400           | 400           | 400           |
| 067001 BOOKS & PERIODICALS       | 50            | -        | 50            | 50            | 50            |
| 068002 CLOTHING                  | 500           | -        | 500           | 500           | 500           |
| 068003 PROTECTIVE CLOTHING       | -             | -        | -             | -             | -             |
| 068030 TOOLS                     | 700           | -        | 700           | 700           | 700           |
| 074000 MACHINERY AND EQUIPMENT   | 500           | -        | 500           | 500           | 500           |
|                                  | <b>29,795</b> | <b>-</b> | <b>45,744</b> | <b>49,428</b> | <b>49,428</b> |

|                                       | FY09                      | FY09           | FY10           | FY11                  | FY11                        |
|---------------------------------------|---------------------------|----------------|----------------|-----------------------|-----------------------------|
|                                       | BUDGET                    | ACTUAL         | BUDGET         | DEPARTMENT<br>REQUEST | CITY MANAGER<br>RECOMMENDED |
| <b>COLLECTION MAINS PORTSMOUTH</b>    |                           |                |                |                       |                             |
| <b>51-751-680-67-100-491</b>          |                           |                |                |                       |                             |
| 011001                                | REGULAR SALARIES          | 6,966          | 2,449          | 6,966                 | 7,378                       |
| 011058                                | BILLABLE SALARIES         | -              | -              | -                     | -                           |
| 012001                                | PART TIME SALARIES        | -              | -              | -                     | -                           |
| 014041                                | OVERTIME                  | 423            | 1,580          | 613                   | 583                         |
| 014053                                | O/T-BILLABLE              | -              | -              | -                     | -                           |
| 022001                                | SOCIAL SECURITY           | 466            | 238            | 586                   | 494                         |
| 022501                                | MEDICARE                  | 109            | 56             | 109                   | 115                         |
| 023001                                | RETIREMENT                | 520            | 353            | 940                   | 729                         |
| 039052                                | PROF/SERV-CAPITAL OUTLAY  | 400            | -              | 400                   | 400                         |
| 039054                                | PROF/SERVICES-CONTRACT    | 500            | -              | 500                   | 500                         |
| 039055                                | PROF/SERV-CONTRACT-BILLAB | -              | -              | -                     | -                           |
| 043018                                | REPAIRS-EQUIPMENT         | -              | -              | -                     | -                           |
| 068008                                | MATERIALS-STOCK           | 500            | 478            | 500                   | 500                         |
| 068009                                | BILLABLE-STOCK MATERIAL   | -              | -              | -                     | -                           |
| 068013                                | MATERIAL-BILLABLE         | -              | -              | -                     | -                           |
| 068016                                | MATERIALS                 | 750            | 2,607          | 750                   | 750                         |
|                                       |                           | <b>10,634</b>  | <b>7,761</b>   | <b>11,364</b>         | <b>11,449</b>               |
| <b>COLLECTION MAINS PEASE</b>         |                           |                |                |                       |                             |
| <b>51-751-680-67-500-491</b>          |                           |                |                |                       |                             |
| 011001                                | REGULAR SALARIES          | 2,786          | -              | 2,786                 | 2,951                       |
| 011056                                | CAPITAL OUTLAY-LABOR      | -              | -              | -                     | -                           |
| 011059                                | BILLABLE CAP OUTLAY SAL   | -              | -              | -                     | -                           |
| 014041                                | OVERTIME                  | 169            | -              | 346                   | 233                         |
| 014057                                | O/T BILLABLE CAP OUTLAY   | -              | -              | -                     | -                           |
| 022001                                | SOCIAL SECURITY           | 186            | -              | 186                   | 197                         |
| 022501                                | MEDICARE                  | 44             | -              | 62                    | 46                          |
| 023001                                | RETIREMENT                | 208            | -              | 291                   | 292                         |
| 039052                                | PROF/SERV-CAPITAL OUTLAY  | -              | -              | -                     | -                           |
| 068008                                | MATERIALS-STOCK           | 500            | -              | 500                   | 500                         |
| 068016                                | MATERIALS                 | 500            | -              | 500                   | 500                         |
|                                       |                           | <b>4,393</b>   | <b>-</b>       | <b>4,671</b>          | <b>4,719</b>                |
| <b>COLLECTION-INTRCPTR PORTSMOUTH</b> |                           |                |                |                       |                             |
| <b>51-751-680-68-100-491</b>          |                           |                |                |                       |                             |
| 011001                                | REGULAR SALARIES          | 77,042         | 53,641         | 77,042                | 81,596                      |
| 011056                                | CAPITAL OUTLAY-LABOR      | 9,337          | -              | 12,437                | -                           |
| 011058                                | BILLABLE SALARIES         | -              | -              | -                     | -                           |
| 011059                                | BILLABLE CAP OUTLAY SAL   | -              | -              | -                     | -                           |
| 012001                                | PART TIME SALARIES        | -              | 137            | -                     | -                           |
| 014041                                | OVERTIME                  | 5,249          | 866            | 6,035                 | 6,451                       |
| 014053                                | O/T-BILLABLE              | -              | -              | -                     | -                           |
| 014056                                | O/T CAPITAL OUTLAY LABOR  | -              | -              | -                     | -                           |
| 014057                                | O/T BILLABLE CAP OUTLAY   | -              | -              | -                     | -                           |
| 022001                                | SOCIAL SECURITY           | 5,777          | 3,538          | 6,377                 | 5,459                       |
| 022501                                | MEDICARE                  | 1,351          | 827            | 1,351                 | 1,277                       |
| 023001                                | RETIREMENT                | 6,446          | 5,237          | 7,246                 | 8,065                       |
| 039052                                | PROF/SERV-CAPITAL OUTLAY  | 2,500          | -              | 2,500                 | 2,500                       |
| 039053                                | PROF/SERV-CAP OUTLAY BILL | -              | -              | -                     | -                           |
| 039054                                | PROF/SERVICES-CONTRACT    | 2,000          | 2,441          | 2,000                 | 2,000                       |
| 039055                                | PROF/SERV-CONTRACT-BILLAB | -              | 245            | -                     | -                           |
| 043018                                | REPAIRS-EQUIPMENT         | 500            | -              | 500                   | 500                         |
| 043024                                | REPAIRS-VEHICLE           | -              | -              | -                     | -                           |
| 043028                                | MAINTENANCE               | 250            | 9,771          | 250                   | 250                         |
| 044002                                | RENTAL OTHER EQUIPMENT    | 10,000         | 298            | 10,000                | 10,000                      |
| 068008                                | MATERIALS-STOCK           | 15,000         | -              | 15,000                | 15,000                      |
| 068009                                | BILLABLE-STOCK MATERIAL   | -              | -              | -                     | -                           |
| 068010                                | CAP OUTLAY-STOCK MATERIAL | 10,000         | -              | 10,000                | 10,000                      |
| 068011                                | BILL CAP OUTLAY STOCK MAT | -              | -              | -                     | -                           |
| 068013                                | MATERIAL-BILLABLE         | -              | (7,857)        | -                     | -                           |
| 068014                                | MATERIALS-CAPITAL OUTLAY  | 4,000          | -              | 4,000                 | 4,000                       |
| 068015                                | MATERIALS-CAP OUTLAY BILL | -              | -              | -                     | -                           |
| 068016                                | MATERIALS                 | 30,000         | 31,082         | 30,000                | 30,000                      |
| 068030                                | TOOLS                     | -              | -              | -                     | -                           |
| 077000                                | STIMULUS-CAPITAL          | 14,743         | -              | 14,743                | -                           |
|                                       |                           | <b>194,195</b> | <b>100,224</b> | <b>199,481</b>        | <b>177,098</b>              |
| <b>COLLECTION-INTRCPTR PEASE</b>      |                           |                |                |                       |                             |
| <b>51-751-680-68-500-491</b>          |                           |                |                |                       |                             |
| 011001                                | REGULAR SALARIES          | 4,180          | 10,137         | 4,180                 | 4,427                       |
| 011056                                | CAPITAL OUTLAY-LABOR      | -              | -              | -                     | -                           |
| 014041                                | OVERTIME                  | 254            | -              | 284                   | 350                         |
| 022001                                | SOCIAL SECURITY           | 280            | 595            | 570                   | 296                         |
| 022501                                | MEDICARE                  | 65             | 139            | 65                    | 69                          |
| 023001                                | RETIREMENT                | 312            | 888            | 842                   | 438                         |
| 039052                                | PROF/SERV-CAPITAL OUTLAY  | -              | -              | -                     | -                           |
| 062011                                | OPERATING SUPPLIES        | -              | -              | -                     | -                           |
| 068008                                | MATERIALS-STOCK           | 1,000          | -              | 1,000                 | 1,000                       |
| 068015                                | MATERIALS-CAP OUTLAY BILL | -              | -              | -                     | -                           |
| 068016                                | MATERIALS                 | 4,000          | 74             | 4,000                 | 4,000                       |
|                                       |                           | <b>10,091</b>  | <b>11,832</b>  | <b>10,941</b>         | <b>10,580</b>               |
| <b>COLLECTION-LATERALS PORTSMOUTH</b> |                           |                |                |                       |                             |

|                                  | FY09             | FY09             | FY10             | FY11                  | FY11                        |
|----------------------------------|------------------|------------------|------------------|-----------------------|-----------------------------|
|                                  | BUDGET           | ACTUAL           | BUDGET           | DEPARTMENT<br>REQUEST | CITY MANAGER<br>RECOMMENDED |
| <b>51-751-680-69-100-491</b>     |                  |                  |                  |                       |                             |
| 011001 REGULAR SALARIES          | 15,325           | 73,253           | 16,325           | 17,290                | 17,290                      |
| 011056 CAPITAL OUTLAY-LABOR      | -                | -                | -                | -                     | -                           |
| 011058 BILLABLE SALARIES         | -                | -                | -                | -                     | -                           |
| 012001 PART TIME SALARIES        | -                | 309              | -                | -                     | -                           |
| 014041 OVERTIME                  | 931              | 13,906           | 1,037            | 1,367                 | 1,367                       |
| 014053 O/T-BILLABLE              | -                | -                | -                | -                     | -                           |
| 022001 SOCIAL SECURITY           | 1,025            | 5,193            | 1,105            | 1,157                 | 1,157                       |
| 022501 MEDICARE                  | 240              | 1,214            | 240              | 271                   | 271                         |
| 023001 RETIREMENT                | 1,144            | 7,618            | 1,124            | 1,709                 | 1,709                       |
| 039052 PROF/SERV-CAPITAL OUTLAY  | -                | -                | -                | -                     | -                           |
| 039054 PROF/SERVICES-CONTRACT    | -                | -                | -                | -                     | -                           |
| 039055 PROF/SERV-CONTRACT-BILLAB | -                | -                | -                | -                     | -                           |
| 068008 MATERIALS-STOCK           | 500              | -                | 500              | 500                   | 500                         |
| 068009 BILLABLE-STOCK MATERIAL   | -                | -                | -                | -                     | -                           |
| 068013 MATERIAL-BILLABLE         | -                | 7,857            | -                | -                     | -                           |
| 068016 MATERIALS                 | 10,000           | 9,642            | 10,000           | 10,000                | 10,000                      |
| 074000 MACHINERY AND EQUIPMENT   | 5,000            | -                | 5,000            | 5,000                 | 5,000                       |
|                                  | <b>34,165</b>    | <b>118,992</b>   | <b>35,331</b>    | <b>37,294</b>         | <b>37,294</b>               |
| <b>COLLECTION-LATERALS PEASE</b> |                  |                  |                  |                       |                             |
| <b>51-751-680-69-500-491</b>     |                  |                  |                  |                       |                             |
| 011001 REGULAR SALARIES          | 1,393            | 2,707            | 3,455            | 3,659                 | 3,659                       |
| 011056 CAPITAL OUTLAY-LABOR      | -                | -                | -                | -                     | -                           |
| 014041 OVERTIME                  | 85               | 121              | 85               | 289                   | 289                         |
| 022001 SOCIAL SECURITY           | 93               | 167              | 93               | 245                   | 245                         |
| 022501 MEDICARE                  | 22               | 39               | 22               | 57                    | 57                          |
| 023001 RETIREMENT                | 104              | 249              | 314              | 362                   | 362                         |
| 068008 MATERIALS-STOCK           | 400              | -                | 400              | 400                   | 400                         |
| 068016 MATERIALS                 | 600              | -                | 600              | 600                   | 600                         |
|                                  | <b>2,697</b>     | <b>3,282</b>     | <b>4,969</b>     | <b>5,612</b>          | <b>5,612</b>                |
| <b>TOTAL SEWER DIVISION</b>      | <b>8,795,019</b> | <b>7,166,518</b> | <b>8,395,569</b> | <b>8,181,651</b>      | <b>8,181,651</b>            |